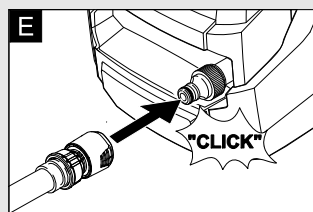
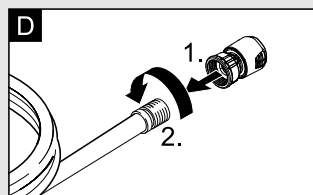
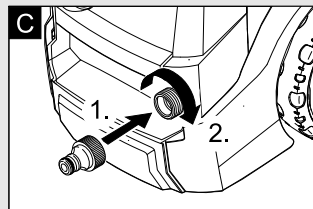
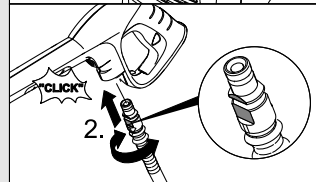
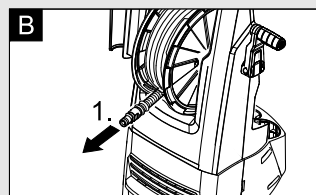
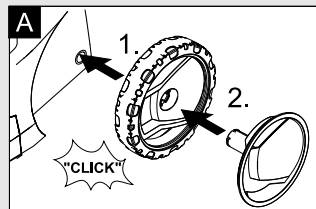
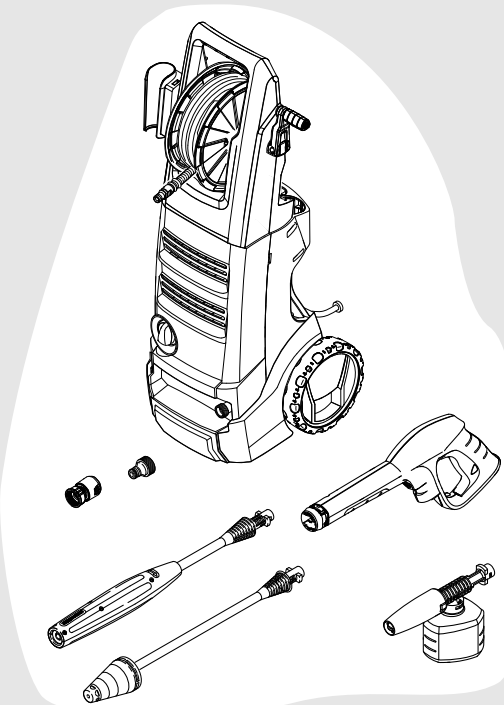


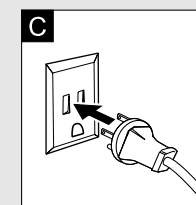
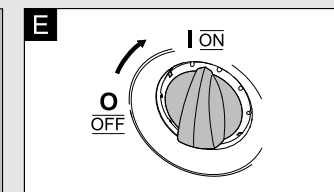
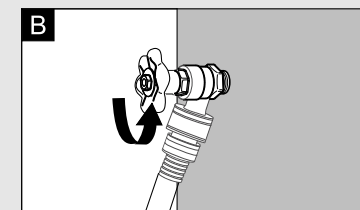
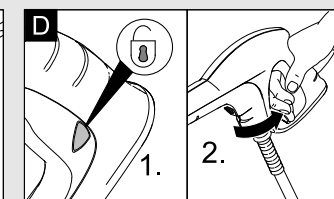
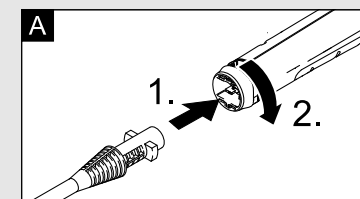
1

ASSEMBLY INSTRUCTIONS / MONTAGE / MONTAJE



2

OPERATING INSTRUCTIONS / MODE D'EMPLOI / FUNCIONAMIENTO

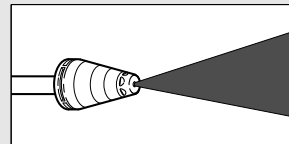
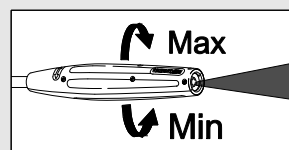


3

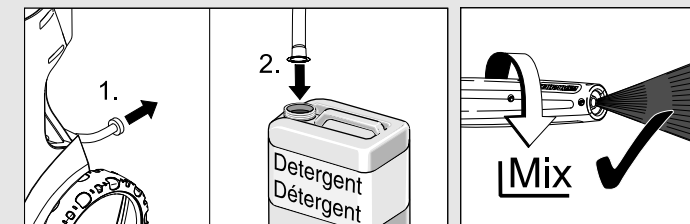
WORKING / TRAVAIL / TRABAJAR



Working with high pressure
Travail en mode haute pression
Trabajar con alta presión



Working with detergent
Travail en détergent
Trabajar con detergents



NOTE: This guide is not intended as a replacement or substitute for completely reading the owner's manual before using the machine.
NOTA: Esta guía no pretende sustituir al manual del usuario y, por tanto, sigue siendo necesario leer éste íntegramente antes de usar la máquina.
REMARQUE : Ce guide ne libère nullement l'exploitant de l'obligation de lire le manuel complet avant d'utiliser la machine.