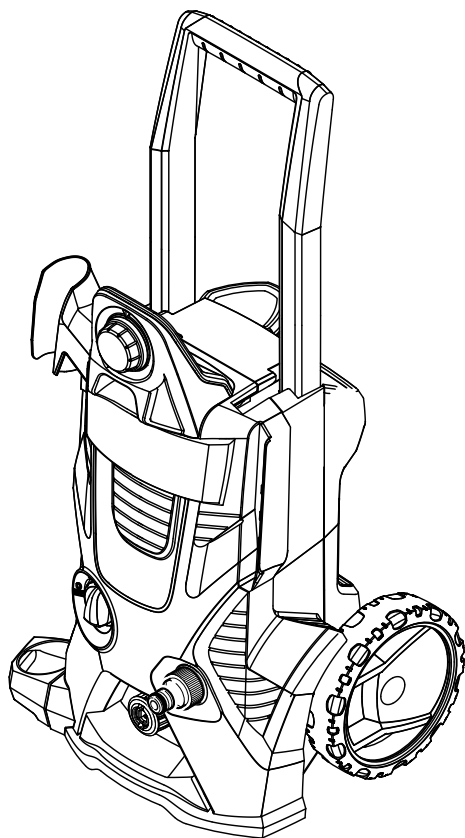


K 4.600



中文 . . . . . 4

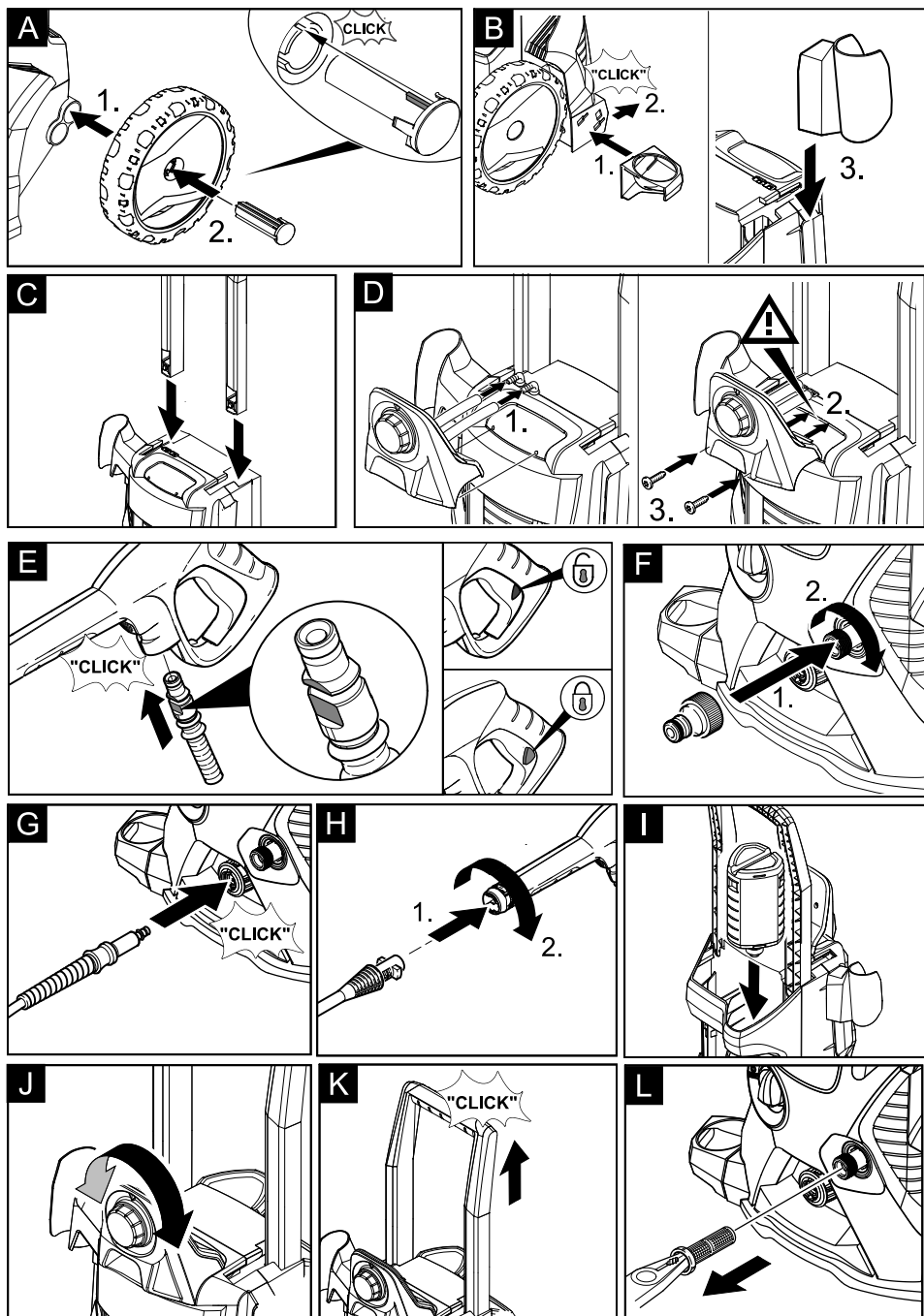
English . . . . 10

Register and win!  
[www.kaercher.com](http://www.kaercher.com)



59644700 (09/11)





## 目录

一般事项	4
安全说明	4
操作说明	6
运输	8
储存	8
保养与维护	8
故障排除	9
产品规格 / 参数	9

## 一般事项

亲爱的客户：



在您初次使用本产品前，请仔细阅读本说明书，并请妥善保存以便日后查阅。

## 恰当的使用


本高压清洗机仅供家庭及个人使用。

- 利用高压水喷射方式（需要时使用清洁剂），清洗机器、车辆、建筑物表面、阳台、花坛装备等。
- 请使用凯驰认可的附件产品、备用零部件和清洁剂。请参考清洁剂包装上相应的说明部分。

## 环境保护



包装材料可以回收利用。请不要把包装材料与普通垃圾放在一起处理，而应妥善安排回收。

 旧的设备中含有宝贵的可再利用的材料，应加以回收利用。请通过适当的收集系统处理您的旧设备。

内部材料提示（REACH）

最新的内部材料信息请您在如下链接中查找：

[www.kaercher.com/REACH](http://www.kaercher.com/REACH)

## 质量保证

我们的质量保证条款适用于全球各分公司。在质量保证期内，如果您的产品发生了任何故障，我们都将为您提供免费维修，但是这种故障应当是由于机身材料或制造上的缺陷造成的。请您向经销商或者与您距离最近的经过授权的客户服务中心联系，提出保修请求，并提供相应的产品购买证明文件。

（地址详见背面。）

## 说明书中的符号

### ⚠ 危险

即刻引发威胁的危险，致使身体严重伤害或死亡。

### ⚠ 警告

潜藏的危险情况，可能致使身体严重伤害或死亡。

### 注意

潜藏的危险情况，可能致使身体轻微伤害或损伤。

## 设备上的符号

- 不恰当的使用高压软管可能导致危险。喷射时请勿喷向人员、动物、运作时的电机产品或本产品。
- 霜冻会损坏未完全清空的清洁器。冬季将清洁器保存在一个无霜冻的空间内。



## 安全说明

### ⚠ 危险

- 请勿用湿手接触插头和插座。
- 请勿使用损伤的电源线和重要部件（例：高压软管、喷射装置、安全装置等）。
- 每次运行前都要确认插头和电源线是否有损坏。若存在损坏的电源线应立即让已授权的客户服务中心 / 电气专业人员进行更换。
- 使用前确认高压软管是否破损。损伤的高压软管应立即更换。
- 禁止在存在爆炸危险的空间内运行本设备。
- 在危险区域（如：加油站）使用设备时应遵守相关的安全规定。

- 高压喷枪使用不当，会带来危险。不能对准人、动物、电器设备或者设备自身喷射。
- 高压水枪严禁对人或设备使用者本身进行衣物或鞋的清洗。
- 请勿喷向可能影响健康的危险物质（例：石棉）或物体。
- 在清洗汽车轮胎时，过高的压力可能会损坏轮胎和气门。轮胎褪色是第一个危险的信号，损坏的轮胎非常危险。在清洗轮胎时，请保持高压喷嘴最少 30 厘米的距离！
- 爆炸危险！  
不得喷射可燃液体。  
任何溶解性液体或没稀释的酸性物质和溶解剂不允许吸取！这些物质包括汽油、涂料稀释剂或燃料。这些物质的喷雾存在可燃性、爆炸性和毒性特质。请勿使用与丙酮没有稀释的酸性物质及溶解剂，因为可能造成本设备的损伤。
- ⚠ 警告
- 不论插头还是电源线（包括电源线延长线）都应当防水，勿浸入水中。
- 不适合的电源延长线可能产生危险。仅使用与本设备使用目的相符的带有电源线规格标识的室外用电源延长线。1 - 10 m: 1.5 mm<sup>2</sup>; 10 - 30 m: 2.5 mm<sup>2</sup>
- 总是将电缆卷轴中的电线充分展开。
- 高压水管及其接头等附件对清洗机安全很重要。仅使用由凯驰公司推荐的高压水管及其接头等配件。
- 必须确定设备不能由身体能力有限、感官能力弱或理解能力差的人员操作。儿童或未经指导的人员都不准操作本设备。  
应照看好儿童，以确保他们不用设备玩耍。  
让儿童远离包装薄膜，否则会有窒息危险！
- 操作者必须合理操作设备，注意周围环境和人员，尤其是儿童，以免造成危险。
- 在其他人员可能达到的距离内请勿使用本设备，除非穿有防护服。
- 请穿戴合适的防护服和防护镜，以防止使用时从被清洁物体表面溅出的水渍或污渍。

## 注意

- 工作间歇或无人看管设备时，关闭总开关 / 设备开关或拔下电源插头。
- 设备不可在环境温度 0 度以下使用。
- 当您清洗有涂装的物体表面时，保持最小 30 厘米的喷射距离，以避免在涂装表面上造成损伤。
- 严禁设备无人状态下，无人看管。
- 需要注意的是，不得碾压、压挤、拖拽或通过诸如此类的行为而损坏电源连接线或延长线缆。避免热源、油或者锋利的刀刃从而保护电源线。
- 所有导电性物体严禁使用高压喷枪清洗。
- 本设备所连接的电源，必须按照国际电工委员会标准 (IEC-60634) 进行安装。
- 本设备只能连接交流电源。电压必须满足设备铭牌上的数据要求。
- 本着安全的原则，我们公司推荐本设备应通过漏电保护断路器（最大电流为 30 毫安）而使用。
- 对于会产生含油废水的清洁操作，例如清洗发动机、车身底部等，可利用装有油类分离器的清洁装置来处理。
- 本设备应使用凯驰公司制造或推荐的清洗剂。使用其它品牌的清洗剂或化学品可能会影响到高压清洗机的安全性。

## 安全装置

### 注意

安全装置就是为了保护使用者，因此不允许随意改造或重组。

### 设备开关

设备开关是为了防止设备误启动。

### 安全制动装置

水枪枪柄上的安全制动装置可防止设备被误启动。

### 带压力开关的溢流阀

溢流阀阻碍压力超过允许的工作压力。当松开手持喷枪的控制杆，压力开关关闭，高压喷射停止。拉上该杆，泵又被开启。

## 稳定性的必要条件

### 注意

使用设备或在设备上进行任何作业前要先确保设备的稳定性，以避免事故或故障发生。

- 操作者应将设备放在平坦地面上。

## 操作说明

### 供货范围

设备的供货范围都已绘制在包装上。因此，打开包装时请检查产品是否齐全。如有附件缺失或在运输过程中损坏，请联系经销商。

### 设备说明

图片参见第 2-3 页

- 1 管接头
- 2 高压软管
- 3 高压软管的快速联轴节
- 4 带有水过滤器的供水连接装置
- 5 产品开关“0/OFF” / “1/ON”
- 6 洗涤剂供给调节装置
- 7 喷枪存储架
- 8 可拔下的运输手柄
- 9 高压软管指示
- 10 洗涤剂箱包括洗涤剂接头的保存格
- 11 毛刷存储架
- 12 洗涤剂箱包括封盖
- 13 电源线
- 14 轮子
- 15 手持喷枪
- 16 喷枪枪柄上的安全装置
- 17 喷枪高压软管分离卡扣
- 18 带旋转喷嘴的喷杆（可调）
- 19 带旋转喷嘴的喷杆

#### 特殊附属配件

特殊附属配件的使用可延长设备的使用寿命。详细事项请联系凯驰公司或当地经销商。

### 设备运作前

使用设备前，请按图示将部件组装好。

#### 装配轮子

##### → 图 A

将轮子压到支座中，使用所附栓塞将其保险固定，注意调整栓塞。

#### 装配手持喷枪的保存格

##### → 图 B

将下支架放到缺口中并向前推移，可以听到卡进去的声音。  
放上上支架并向下压到挡块上。

#### 安装运输手柄

##### → 图 C

将运输手柄放到支座中，直至感觉到有

阻力。使用大拇指根部手掌或一个橡胶胶锤通过短促敲击将其安置到位。

#### 装配洗涤剂计量调节器

需要 2 个随机螺栓和一个十字头螺丝刀 PH2。

##### → 图 D

将两个洗涤剂软管插到接头上。  
放上计量调节器并使用 2 个螺栓固定。  
提示：装配时务必注意计量调节器的连接板固定到外壳上为此所设定的缺口中。

#### 将高压软管与手持喷枪相连

##### → 图 E

插入喷枪软管直至发出声音时。  
注意：接管应正确排列。  
拉高压软管以检查是否安全连接。

### 供水

#### ⚠ 警告

根据相关法规，若没有系统分离器，不能使用该设备直接从饮水系统供水。请使用凯驰公司制造的合适的系统分离器。或使用符合 EN12729 BA 的合适的系统分离器。



#### 注意

系统分离装置总是连接供水，而不要直接连接仪器！

注意：水中杂质可能损伤高压泵和部件。  
为防止此类状况，我们郑重推荐凯驰水过滤器（选配件，货号：4.730-059.0）。

#### 主要水源

请遵从与供水相关的法规。

关于连接值，请参见铭牌 / 产品参数。

→ 使用带标准接头的纤维增强水软管（非标准配置）。（直径最小 1/2 英寸或最小 13 毫米；长度最短为 7.5 米）

##### → 图 F

将耦合单元拧到机器的水接头上。  
将供水软管接到耦合单元上，然后将它连接到供水系统。

#### 开放式容器供水

当高压清洗机装置配置凯驰带止回阀功能的吸水软管时，可以使用开放式容器（水桶，水池）内吸水工作。（最大吸取高度参考技术标准）

→ 在配备止回阀的 KARCHER 吸取软管内注水后紧固连接部位后，悬挂天水桶。

→ 从设备高压连接部位分离高压软管。

→ 接通设备“1/ON”并等待（最多 2 分钟），直至流出高压接口的水没有气泡

产生。

- ➔ 将设备设定为关闭 “0/OFF”。

## 调试设备

注意

干运转（缺水）2 分钟以上会导致高压泵损坏。设备 2 分钟内没有压力形成，关闭设备并按照“故障帮助”一章内的提示进行操作。

- ➔ 图 6

将高压软管牢固地插到清洁器上的快速接头上，可以听到卡进去的声音。

注意：接管应正确排列。

拉高压软管以检查是否安全连接。

- ➔ 图 11

将喷头置入喷枪后成 90° 旋转固定。

- ➔ 完全打开水龙头。

- ➔ 插上电源插头。

- ➔ 将设备设定为 “I/ON”。

## 设备运作

⚠ 危险

高压模式操作时，喷枪具有反作用力，请站稳立好。

注意

在开始清洁前确保高压清洁器可靠位于底面上。清洁时使用防护眼镜和防护服。

- ➔ 释放喷枪上的安全装置。

- ➔ 握紧扳手启动设备。

注意：松开水枪扳手停止设备。高压残留于系统内。

调节压力喷头（压力可调）

适用于广泛的清洗作业中。作业压力：“最小” ~ “最大” - 不区别运作步骤。

- ➔ 松开水枪扳手。

- ➔ 旋转喷头至所需位置。

提示：适合于使用洗涤剂进行工作，喷管为此转到“混合”位置上。

带旋转喷嘴喷杆

清除顽固污渍。

注意

不使用脏铣刀清洁汽车轮胎、油漆或敏感表面如木材，存在损坏的危险。

- 不能使用清洁剂。

## 使用清洁剂的清洗作业

每次使用本设备清洁时请只使用凯驰公司的清洁剂和护理液，因为它们是专门为您

机器器开发研制的。如果使用其它清洁剂和护理液，则会加快磨损，我们也将因此取消质保。相关信息请咨询当地经销商或直接向凯驰公司垂询。

关于洗涤剂的提示：可以购买已经为这些清洁剂装在带封盖的洗涤剂箱中即可使用的最常用的 Kärcher 洗涤剂。这样即免除了繁琐的转倒或者添加。

- ➔ 图 11

取下洗涤剂箱的盖子并将洗涤剂箱通过开孔向下压到洗涤剂接口中。

- ➔ 图 12

用洗涤剂调节装置设定洗涤溶液的吸取量。

- ➔ 使用调节压力喷头（可变水压）。

- ➔ 将旋转喷头设定为 “Mix”。

注意：由此，使用时清洗剂溶解物混入喷出的水柱之中。

推荐的清洗方法

- ➔ 在干燥的表面上少量喷射清洁剂，让清洁剂在表面发生反应，但不要使之变干。

- ➔ 利用高压喷射方式刷洗被溶解的杂质。

## 中断设备操作

- ➔ 松开水枪扳手。

- ➔ 推上喷枪上的安全装置。

- ➔ 如，长时间（5 分钟以上）运作中断时，将设备开关设定为 “0/OFF”。

- ➔ 将喷枪插入附件插槽内。

## 结束设备操作

注意

当系统中无可利用压力，就要把高压软管从手持喷枪或设备上拆下来。

- ➔ 从支座中拉出洗涤剂箱并用盖子封好。

为了保存，转动 180°，放到支座中。

- ➔ 松开水枪扳手。

- ➔ 将设备设定为关闭 “0/OFF”。

- ➔ 关闭水龙头。

- ➔ 自供水处分离设备。

注意：分离进水管或高压软管时，在此操作后温水可从接口中流出。

- ➔ 按压水枪扳手以除去在设备系统中残留的压力。

- ➔ 推上喷枪上的安全装置。

- ➔ 取下插头。

## 运输

### 注意

为了避免事故和伤害，搬运时要注意设备的重量（参见技术参数）。

### 手动搬运

- 握住手柄拉高并提起设备。
- 握住运输手柄拖动设备。

### 图K

- 移动设备前将运输手柄完全向上拉，可以听到卡进去的声音。

### 车辆运输

- 在卧式运输前：从支座中拉出洗涤剂箱并用盖子封好。
- 确保设备不会滑倒和倾覆。

## 储存

### 注意

为了避免事故和伤害，选择存放地点时要考虑到设备的重量（参见技术参数）。

### 设备储存

- 设备置放在平坦地面上。
- 按下手持喷枪上的分离按钮，高压软管从手持喷枪上分离开来。
- 高压软管的快速联轴节外壳往箭头方向按压并拔出高压软管。
- 将手持喷枪连同喷管放到手持喷枪的保存格中。
- 妥善保管电源线、高压软管及其它配件等。

长期存放之前，如在冬季特别要注意维护一章的提示。

### 防霜冻

### 注意

保护设备及配件以防止霜冻。

在水没有完全排空的情况下，设备和附属品或许会因含霜而破损。为了避免损坏机器：

- 完全排空设备内的水：打开不带高压软管和供水连接装置的设备（最多1分钟），等待直至无水从高压连接部位出来时。关闭设备。
- 机器及所有附件应在防霜的室内保管。

## 保养与维护

### ⚠ 危险

在对设备进行维修与维护之前，必须关闭设备并拔下电源插头。

### 保养

在长期储存（如冬季）前：

- 取下清洁剂抽吸软管中的滤网并用流动的自来水清洗。
- 图L  
用尖嘴钳取下下水接头中的滤网并用流动的自来水清洗。

### 维护

该设备免维护。

### 备件

请仅使用凯驰公司的原装备件。在本说明书后附有一份备件总览表。



## 故障排除

通过下面的简介，您可以纠正小的故障。

如有疑问，请联系凯驰公司授权的客户服务中心。

**⚠ 危险**

在对设备进行维修与维护之前，必须关闭设备并拔下电源插头。

只允许接受过授权的客户服务人员进行维修工作和在电气零部件上进行工作。

### 设备不运作

- ➔ 拉动手持喷枪的控制杆，设备接通。
- ➔ 检查电源电压必须跟型号标识上给出的电压一致。
- ➔ 检查电源线是否损伤。

### 设备压力不足

- ➔ 检查喷头的设定状态。
- ➔ 设备排气：拆开高压软管，打开设备让其运行（最多 2 分钟），直至流出高压接口的水没有气泡产生。关闭设备并重新连接上高压软管。
- ➔ 检查供水连接系统。
- ➔ 用尖嘴钳取下水接头中的滤网并用流动的自来水清洗。

### 设备不运作，发动机存在声响

原因：因低压的电压降下或电源连接线的使用

➔ 开关时首先拉喷杆后将设备开关设定为“**I/ON**”。

### 巨大的压力变化

- ➔ 高压清洗：用针除去喷头孔处的杂物，再用水清洗。
- ➔ 检查供水连接系统。

### 设备漏水

- ➔ 在技术方面可能存在高压泵少许漏水的情况。漏水量较大时请联系本公司认可的客户服务中心。

### 无法吸取清洁剂

- ➔ 使用调节压力喷头（可变水压）。将旋转喷头设定为“**Mix**”。
- ➔ 检查洗涤剂供给调节装置设定的状态。
- ➔ 关闭清洁剂并重新连接短的高压软管。
- ➔ 检查清洁剂抽吸软管是否扭结。

## 产品规格 / 参数

水接头		
进水温度（最高）	° C	40
流量（最小）	升 / 分	10
供水（最大）	MPa	0, 8
最大吸取	m	0, 5
电源连接		
电压 (1~50 Hz)	V	220
输入功率	kW	1, 9
保险丝（慢断型）	A	
保护等级	I	
保护程度	IP X5	
功率参数		
工作压力	MPa	12
最大允许压力	MPa	13
水流消耗	升 / 分	6, 7
尺寸和重量		
长度	毫米	876
宽度	毫米	325
高度	毫米	285
重量，包括附件	千克	13, 2
清洁剂剂消耗	升 / 分	0-0, 3
后挫力	N	15
声压级	dB (A)	75

规格若有变更，恕不另行通知。

## Contents

General information .....	10
Safety instructions .....	11
Operation .....	13
Transport .....	16
Storage .....	16
Maintenance and care .....	17
Troubleshooting .....	17
Technical specifications .....	18

## General information

### Dear Customer,



Please read and comply with these original instructions prior to the initial operation of your appliance and store them for later use or subsequent owners.

### Proper Use

This high-pressure cleaner is designed for domestic use only:

- to clean machines, vehicles, buildings, tools, facades, terraces, garden equipment etc. using a high-pressure water jet (and detergents if required).
- with accessories, replacement parts and detergents approved by KÄRCHER. Observe the instructions provided with these detergents.

### Environmental protection



The packaging material can be recycled. Please do not place the packaging into the ordinary refuse for disposal, but arrange for the proper recycling.



Old appliances contain valuable materials that can be recycled. Please arrange for the proper recycling of old appliances. Please dispose your old appliances using appropriate collection systems.

### Notes about the ingredients (REACH)

You will find current information about the ingredients at:

[www.kaercher.com/REACH](http://www.kaercher.com/REACH)

## Warranty

The warranty terms published by the relevant sales company are applicable in each country. We will repair potential failures of your appliance within the warranty period free of charge, provided that such failure is caused by faulty material or defects in manufacturing. In the event of a warranty claim please contact your dealer or the nearest authorized Customer Service centre. Please submit the proof of purchase. (See address on the reverse)

## Symbols in the operating instructions

### **Danger**

*Immediate danger that can cause severe injury or even death.*

### **Warning**

*Possible hazardous situation that could lead to severe injury or even death.*

### **Caution**

*Possible hazardous situation that could lead to mild injury to persons or damage to property.*

## Symbols on the machine

- *High-pressure jets can be dangerous if improperly used. The jet must not be directed at persons, animals, live electrical equipment or at the appliance itself.*
- *Frost can destroy the not completely drained appliance. Store the appliance in a frost resistant room during winter.*



## Safety instructions

### **Danger**

- Never touch the mains plug and the socket with wet hands.
- The appliance must not be used if the power cord or important parts of the appliance, e.g. high-pressure hoses, trigger gun or safety devices are damaged.
- Check the power cord and mains plug for damage before every use. If the power cord is damaged, please arrange for it to be replaced immediately by an authorised repair agent or a skilled electrician
- Check the high-pressure hose for damage before every use. Please arrange for the immediate replacement of a damaged high-pressure hose.
- The appliance may not be used in areas where a risk of explosion is present.
- If the appliance is used in hazardous areas (e.g. filling stations) the corresponding safety provisions must be observed.
- High-pressure jets can be dangerous if improperly used. The jet must not be directed at persons, animals, live electrical equipment or at the appliance itself.
- The high-pressure jet must not be directed at other persons or directed by the user at him/herself to clean clothing or footwear.
- Never use the appliance to clean objects containing hazardous substances (e.g. asbestos).
- Vehicle tyres or tyre valves are susceptible to damage from the high-pressure jet and may burst. The first indication of this is a discolouration of the tyre. Damaged vehicle tyres/tyre valves are highly dangerous. Ensure that a distance of at least 30 cm is observed when cleaning with the jet!
- Risk of explosion!  
Do not spray flammable liquids.  
Never draw in fluids containing solvents or undiluted acids and solvents! This includes petrol, paint thinner and heating

oil. The spray mist thus generated is highly inflammable, explosive and poisonous. Do not use acetone, undiluted acids and solvents as they are damaging to the materials from which the appliance is made.

### **Warning**

- The mains plug and the coupling of an extension cable must be watertight and must never lay in the water.
- Unsuitable extension cables can be hazardous. Only use extension cables outdoors which have been approved for this purpose and labelled with a sufficient cable cross-section:  
1 - 10 m: 1.5 mm<sup>2</sup>; 10 - 30 m: 2.5 mm<sup>2</sup>
- Always fully unroll electrical cables from the cable drum.
- High-pressure hoses, fixtures and couplings are important for the safety of the appliance. Only use high-pressure hoses, fixtures and couplings recommended by the manufacturer.
- This appliance is not intended for use by persons with reduced physical, sensory or mental capabilities.  
The appliance must not be operated by children or persons who have not been instructed accordingly.  
Children should be supervised to prevent them from playing with the appliance.  
Keep packaging film away from children - risk of suffocation!
- The operator must use the appliance correctly. When working with the appliance, he must consider the local conditions and pay due care and attention to other persons, in particular children, who are nearby.
- Do not use the appliance when there are other persons around unless they are also wearing safety equipment.
- Wear protective clothing and safety goggles to protect against splash back containing water or dirt.

## Caution

- *In case of extended downtimes, switch the appliance off at the main switch / appliance switch or remove the mains plug.*
- *Do not operate the appliance at temperatures below 0 °C.*
- *Observe a distance of at least 30 cm when using the jet to clean painted surfaces to avoid damaging paintwork.*
- *Never leave the appliance unattended when it is in operation.*
- *Make sure that the power cable or extension cables are not damaged by running over, pinching, dragging or similar. Protect the power cable from heat, oil, and sharp edges.*
- *All current-conducting parts in the working area must be protected against jet water.*
- *The appliance may only be connected to an electrical supply which has been installed in accordance with IEC 60364.*
- *The appliance may only be connected to alternating current. The voltage must correspond with the type plate on the appliance.*
- *For safety reasons, we recommend that you operate the appliance only via a earth-leakage circuit breaker (max. 30 mA).*
- *Cleaning operations which produce oily waste water, e.g. engine washes, underbody washes, may only be carried out using washing stations equipped with an oil separator.*
- *This appliance was designed to be used with detergents which are supplied or recommended by the manufacturer. The use of other detergents or chemicals may compromise the safety of the appliance.*

## Safety Devices

### Caution

*Safety devices protect the user and must not be modified or bypassed.*

### Power switch

The appliance switch prevents unintentional operation of the appliance.

### Lock trigger gun

This lock locks the lever of the trigger gun and prevents the inadvertent start of the appliance.

### Overflow valve with pressure switch

The overflow valve prevents the permissible working pressure from being exceeded. If the lever on the trigger gun is released the pressure switch turns off the pump, the high-pressure jet is stopped. If the lever is pulled the pump is turned on again.

## Prerequisites for the appliance's stability

### Caution

*Create stability for the appliance prior to all work on or with the appliance to prevent accidents or damage.*

- The stability of the appliance is warranted when it is placed onto an even surface.

## Operation

### Scope of delivery

The scope of delivery of your appliance is illustrated on the packaging. Check the contents of the appliance for completeness when unpacking.

In the event of missing accessories or any transport damage, please contact your dealer.

### Description of the Appliance

#### Illustrations on Page 2 - 3

- 1 Coupling element for water connection
- 2 High pressure hose
- 3 Quick coupling for high pressure hose
- 4 Water connection with integrated sieve
- 5 Appliance switch "0/OFF"/ „I/ON“
- 6 Dosage regulator for detergent
- 7 Storage for trigger gun
- 8 Transport handle, detachable
- 9 Storage for high-pressure hose
- 10 Storage of Plug 'n' Clean detergent bottle with detergent connection
- 11 Storage for accessories
- 12 Plug 'n' Clean detergent bottle with locking lid
- 13 Mains cable with mains plug
- 14 Wheels
- 15 Trigger gun
- 16 Lock trigger gun
- 17 Key to detach the high pressure hose from the trigger gun
- 18 Spray lance with pressure regulation (Vario Power)
- 19 Spray lance with Dirtblaster

#### Special accessories

Special accessories expand the possibilities of using your appliance. Please contact your KÄRCHER dealer for further information.

## Before Startup

Mount loose parts delivered with appliance prior to start-up.

#### Install wheels

##### → Illustration

Push the wheels into the intake and secure with the enclosed plugs, watch for positioning of plug.

#### Install the storage for hand-spray gun

##### → Illustration

Place the bottom holder into the recesses and push forward until it audibly locks in.

Insert the top holder and push down all the way.

#### Install the transport handle

##### → Illustration

Place the transport handle into the intake until you feel resistance. Use the heel of your hand or a soft rubber mallet to position it.

#### Install the dosage regulator for detergent

You will need the 2 included screws as well as a Philips screwdriver PH 2.

##### → Illustration

Insert both detergent hoses onto the hose fittings.  
Install the dosage regulator and connect using 2 screws.

**Note:** During installation you must make sure that the tongues of the dosage regulator match up with the intended recesses in the casing.

#### Connect the high pressure hose to the hand spray gun

##### → Illustration

Push the high pressure hose into the trigger gun until it locks audibly.

**Note:** Make sure the connection nipple is aligned correctly.

Check the secure connection by pulling on the high pressure hose.

## Water supply

### **Warning**

According to the applicable regulations, the appliance must never be used on the drinking water supply without a system separator. Use a suitable system separator manufactured by KÄRCHER; or, as an alternative, a system separator as per EN 12729 Type BA. Water flowing through a system separator is considered non-drinkable.



### **Caution**

Always connect the system separator to the water supply, never directly to the appliance!

**Note:** Impurities in the water can damage the high-pressure pump and accessories. For protection, the use of the KÄRCHER water filter (optional accessory, order no. 4.730-059) is recommended.

### **Water supply from mains**

Observe regulations of water supplier.

For connection values, see type plate/technical data.

→ Use a fibre-reinforced water hose (not included) with a standard coupling. (Minimum diameter 1/2 inch (13 mm), minimum length 7.5 m).

→ Illustration 

Screw the supplied coupling element to the water connection on the appliance. Push the water supply hose onto the coupling unit, then connect it to the water supply.

### **Drawing in water from open reservoirs**

This high-pressure cleaner is suited to work with the KÄRCHER suction hose with backflow valve (Optional accessory, order no. 4.440-238) to draw in surface water, e.g. from water butts or ponds (see specifications for max. suction height).

→ Fill the KÄRCHER suction hose with backflow valve with water, screw to water supply and hang into the water butt.  
→ Separate the high pressure hose from the high pressure connection of the appliance.

→ Switch the appliance on (I/ON) for a max. of 2 minutes and wait until the water exits the high-pressure connection without bubbles.  
→ Turn off the appliance "0/OFF".

## Start up

### **Caution**

*Dry runs lasting longer than two minutes lead to damages to the high pressure pump. If the appliance does not build up pressure within two minutes, switch it off and proceed as instructed in the Chapter "Troubleshooting".*

→ Illustration 

Insert the high pressure hose tightly into the quick coupling on the appliance, it will lock in audibly.

**Note:** Make sure the connection nipple is aligned correctly.

Check the secure connection by pulling on the high pressure hose.

→ Illustration 

Push the spray lance into the trigger gun and fasten it by turning it through 90°.

→ Completely open the water tap.

→ Insert the mains plug into the socket.

→ Turn on the appliance "I/ON".

## Operation

### **Danger**

*The trigger gun is subjected to a recoil force when the water jet is discharged. Make sure that you have a firm footing and are also holding the trigger gun and spray lance firmly.*

### **Caution**

*Prior to cleaning, make sure that the high pressure is placed safely on level ground. Wear protective goggles and protective clothing during the cleaning process.*

→ Unlock the lever on the trigger gun.

→ Pull on the lever of the trigger gun; the device will switch on.

**Note:** Release the lever of the trigger gun; the device will switch off again. High pressure remains in the system.

### Spray lance with pressure regulation

Carrying out the most common cleaning tasks. The work pressure can be stagelessly regulated between "Min" and "Max".

- Release the lever on the trigger gun.
- Turn the spray lance to the desired position.

**Note:** Suitable for working with detergent; for this, turn the spray lance to the "Mix" position.

### Spray lance with Dirtblaster

For particularly dirty items or areas.

#### Caution

*Car tyres, paint or sensitive surfaces such as wood should not be cleaned with the dirt blaster, as there is a risk of damage.*

- Not suitable for use with detergents.

### Working with detergent

Please use exclusively KÄRCHER detergents and care products to carry out the respective cleaning task, as these were specifically developed for your appliance. The use of other detergents and care products may lead to premature wear and can invalidate your warranty claims. Please obtain information at your local dealer or request information directly from KÄRCHER.

**Notes regarding the detergent:** The most commonly used KÄRCHER detergents can be purchased ready to use in their Plug 'n' Clean detergent bottles with locking lids. This will make the pesky refilling and filling processes redundant.

- Illustration 

Remove the lid from the Plug 'n' Clean detergent bottle and press the detergent bottle into the detergent connection with the opening facing down.

- Illustration 

Adjust the suction volume of the detergent solution by means of the dosage regulator for detergents.

- Use spray lance with pressure regulation (Vario Power).
- Turn the spray lance to "Mix" position.

**Note:** This will mix the detergent with the water stream.

### Recommended cleaning method

- Spray the detergent sparingly on the dry surface and allow it to react, but not to dry.
- Spray off loosened dirt with the high-pressure jet.

### Interrupting operation

- Release the lever on the trigger gun.
- Lock the lever on the trigger gun.
- During longer breaks (more than 5 minutes), also turn the appliance off using the "0/OFF" switch.
- Insert the trigger gun in its holder.

### Finish operation

#### Caution

*Only separate the high-pressure hose from the trigger gun or the appliance while there is no pressure in the system.*

- Remove the Plug 'n' Clean detergent bottle from the intake and close it with the lid. To store, place into the intake rotated by 180°.
- Release the lever on the trigger gun.
- Turn off the appliance "0/OFF".
- Turn off tap.
- Detach the appliance from the water supply.

**Caution:** When disconnecting the supply or high pressure hose, warm water may leak from the connections after operation.

- Press the lever on the trigger gun to release any remaining pressure in the system.
- Lock the lever on the trigger gun.
- Pull out the mains plug.

## Transport

### Caution

*In order to prevent accidents or injuries, keep in mind the weight of the appliance during transport (see Specifications).*

### When transporting by hand

- Lift appliance by the carrying handle and carry it.
- Pull the appliance by its transport handle.

Illustration 

- To push the appliance, the transport handle must be pulled all the way up; it will lock into place audibly.

### When transporting in vehicles

- Prior to horizontal transport: Remove the Plug 'n' Clean detergent bottle from the intake and close it with the lid.
- Secure the appliance against shifting and tipping over.

## Storage

### Caution

*In order to prevent accidents or injuries, keep in mind the weight of the appliance when selecting a storage location for it (see Specifications).*

### Storing the Appliance

- Park the machine on an even surface.
- Press the disconnect on the hand spray gun and remove the high pressure hose from the hand spray gun.
- Push the casing of the quick coupling for the high pressure hose toward the rear and disconnect the high pressure hose from the appliance.
- Insert the hand spray gun with the spray lance into the holder for the hand spray gun.
- Stow away the mains cable, the high-pressure hose and accessory at the appliance.

Prior to extended storage periods, as during the winter, also observe the instructions in the Care section.

### Frost protection

### Caution

*Protect the appliance and its accessories against frost.*

The appliance and its accessories can get destroyed through frost if there are any water residues in them. To avoid damage to them:

- Completely drain all water from the appliance: Switch the appliance on with detached high-pressure hose and detached water supply (max. 1 minute) and wait, until no more water exits at the high-pressure connection. Turn off the appliance.
- Store the appliance and the entire accessories in a frost-safe room.




## Maintenance and care

### **Danger**

*Turn off the appliance and remove the mains plug prior to any care and maintenance work.*

### Care

Prior to longer periods of storage, e.g. in the winter:

- ➔ Remove filter from suction hose for detergent and clean under running water.
- ➔ Illustration 
- Pull out the sieve in the water connection using flat-nose pliers and clean under running water.

### Maintenance

The appliance is maintenance-free.

### Spare parts

Use only original KÄRCHER spare parts. You will find a list of spare parts at the end of these operating instructions.

## Troubleshooting

You can rectify minor faults yourself with the help of the following overview. If in doubt, please consult the authorized customer service.

### **Danger**

*Turn off the appliance and remove the mains plug prior to any care and maintenance work.*

*Repair works may only be performed by the authorized customer service.*

### Appliance is not running

- ➔ Pull on the lever of the trigger gun; the device will switch on.
- ➔ Check whether the voltage indicated on the type plate corresponds to the voltage of the mains supply.
- ➔ Check the mains connection cable for damages.

### Pressure does not build up in the appliance

- ➔ Check setting at the spray lance.
- ➔ Appliance ventilation: Switch the appliance on with the high-pressure hose detached and operate (max. 2 minutes) until the water exits the high-pressure connection without bubbles. Switch off appliance and reconnect high-pressure hose.
- ➔ Check the water supply.
- ➔ Pull out the sieve in the water connection using flat-nose pliers and clean under running water.

### Appliance does not start, motor hums

*Cause: Voltage reduction due to weak mains supply or when using an extension cable.*

- ➔ When switching on, first pull the lever of the trigger gun and then switch the appliance switch to "I/ON".

### Strong pressure fluctuations

- ➔ Clean high-pressure nozzle: Remove dirt and debris from the nozzle bore, using a needle and rinse through with water from the front.
- ➔ Check water flow quantity.

### Appliance is leaking

- ➔ Slight leakage from the appliance pump is normal. If the leakage increases contact the authorized customer service.

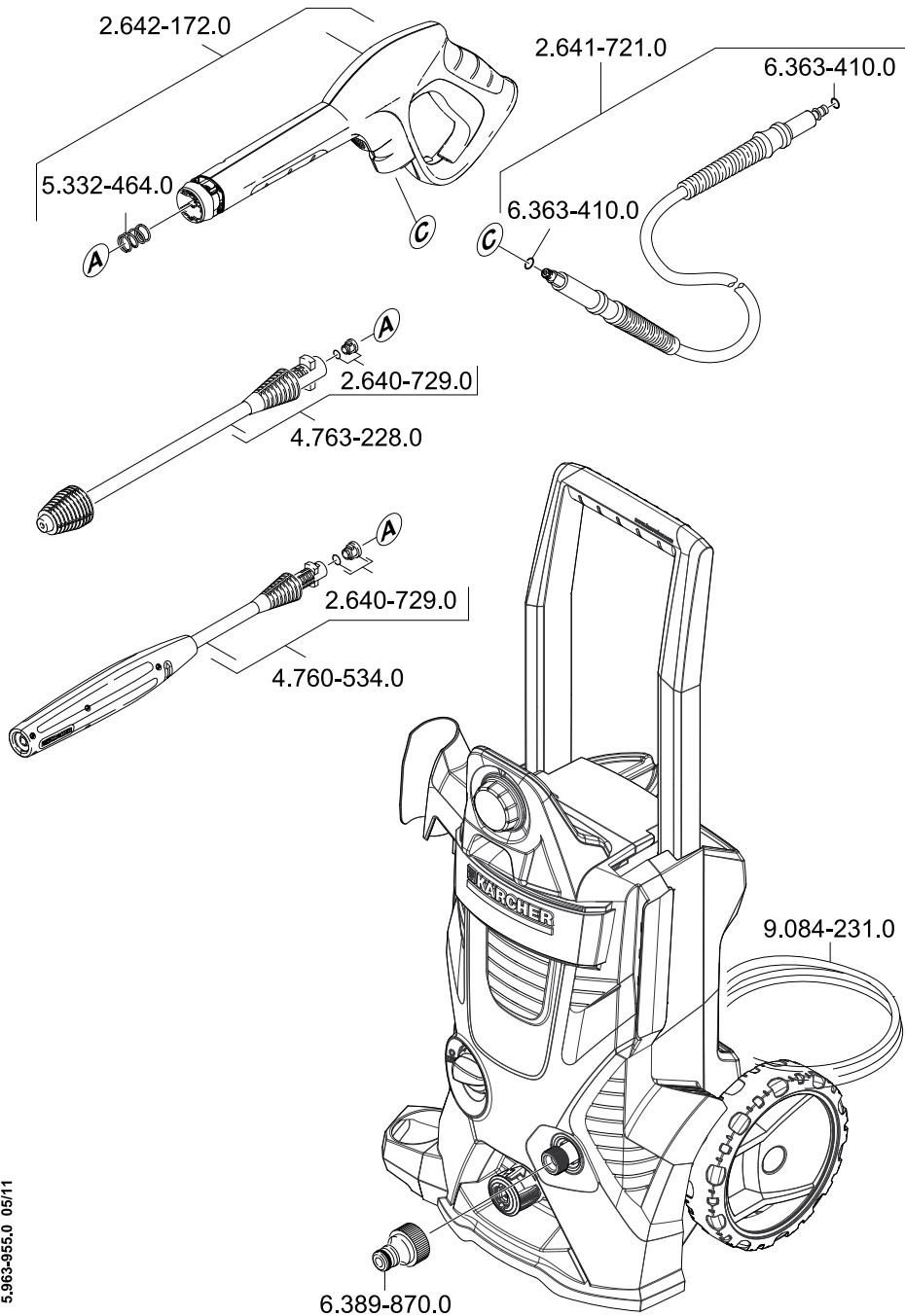
### No detergent infeed

- ➔ Use spray lance with pressure regulation (Vario Power). Turn the spray lance to "Mix" position.
- ➔ Check the settings at the dosage regulator for detergent.
- ➔ Check whether the Plug 'n' Clean detergent bottle is placed into the detergent connection facing down.
- ➔ Check the detergent suction hose for kinks.

## Technical specifications

<b>Water connection</b>		
Max. feed temperature	°C	40
Min. feed volume	l/min	10
Max. feed pressure	MPa	0,8
Max. Suction height	m	0,5
<b>Electrical connection</b>		
Voltage 1~50 Hz	V	220
Connected load	kW	1,9
Mains fuse (slow-blow)	A	
Protective class	I	
Protection class	IP X5	
<b>Performance data</b>		
Working pressure	MPa	12
Max. permissible pressure	MPa	13
Water flow rate	l/min	6,7
<b>Dimensions and weights</b>		
Length	mm	876
Width	mm	325
Height	mm	285
Weight, ready to operate with accessories	kg	13,2
Detergent flow rate	l/min	0 - 0,3
Recoil force of trigger gun	N	15
Sound	dB(A)	75

***Subject to technical modifications!***



**A**

Alfred Kärcher Ges.m.b.H.  
Lichtblaustraße 7  
1220 Wien  
☎ (01) 250 600

**AUS**

Kärcher Pty. Ltd.  
40 Koornang Road  
Scoresby VIC 3179  
☎ (03) 9765 - 2300

**B / LUX**

Kärcher N.V.  
Industrieweg 12  
2320 Hoogstraten  
☎ B: 0900 10027  
LUX: 0032 900 10027

**BR**

Kärcher Indústria e Comércio Ltda.  
Av. Prof. Benedito Montenegro 419  
CEP 13.140-000 - Paulínia - SP  
☎ 0800 176 111

**CDN**

Kärcher Canada Inc.  
6975 Creditview Road Unit #2  
Mississauga, Ontario L5N 8E9  
☎ 1-800-465-4980

**CH**

Kärcher AG  
Industriestraße 16  
8108 Dällikon  
☎ 0844 850 863

**CZ**

Kärcher spol s r.o.  
Modletice č.p. 141  
251 01 Říčany u Prahy  
☎ 0323 606 014

**D**

Alfred Kärcher GmbH & Co. KG  
Service-Center Gissigheim  
Im Gewerbegebiet 2  
97953 Königheim-Gissigheim  
☎ (07195) 903 2065

**DK**

Kärcher Rengøringsystemer A/S  
Gejlhavegård 5  
6000 Kolding  
☎ 70 206 667

**E**

Kärcher S.A.  
Pol. Industrial Font del Radium  
Calle Doctor Trueta 6-7  
08400 Granollers (Barcelona)  
☎ 902 170 068

**F**

Kärcher S.A.S.  
5 Avenue des Coquelicots  
Z.A. des Petits Carreaux  
94865 Bonneuil-sur-Marne  
☎ (01) 43 996 770

**FIN**

Kärcher OY  
Yrittäjätie 17  
01800 Klaukkala  
☎ 0207 413 600

**GB**

Kärcher(UK) Limited  
Kärcher House  
Beaumont Road  
Banbury  
Oxon, OX16 1TB  
☎ 01295 752 200

**GR**

Kärcher Cleaning Systems A.E.  
31-33, Nikitara str. &  
Konstantinoupoleos str.  
13671 Acharnes  
☎ 210 - 2316 153

**H**

Kärcher Hungária Kft  
Tormásrét ut. 2.  
2051 Biatorbágy  
☎ (023) 530 640

**HK**

Kärcher Limited  
Unit 10, 17/F.  
APEC Plaza  
49 Hoi Yuen Road  
Kwun Tong, Kowloon  
☎ (02) 357-5863

**I**

Kärcher S.p.A.  
Via A.Vespucci 19  
21013 Gallarate (VA)  
☎ 848 - 99 88 77

**IRL**

Kärcher Limited  
12 Willow Business Park  
Nangor Road  
Clondalkin Dublin 12  
☎ (01) 409 77 77

**KOR**

Kärcher (Korea) Co. Ltd.  
162 Gukhoe-daero  
(872-2 Sinjeong-Dong)  
Seoul, Korea  
☎ 02-322-6588, A/S.1544-6577

**MAL**

Kärcher Cleaning Systems Sdn. Bhd.  
No. 8, Jalan Serindit 2  
Bandar Puchong Jaya  
47100 Puchong, Selangor  
☎ (03) 5882 1148

**MEX**

Kärcher México, SA de CV  
Av. Gustavo Baz No. 29-C  
Col. Naucalpan Centro  
Naucalpan, Edo. de México  
C.P. 53000 México  
☎ 01 800 024 13 13

**N**

Kärcher AS  
Stanseveien 31  
0976 Oslo  
☎ 24 17 77 00

**NL**

Kärcher BV  
Postbus 474  
4870 AL Etten-Leur  
☎ 0900-33 444 33

**NZ**

Kärcher Limited  
12 Ron Driver Place  
East Tamaki, Auckland  
☎ (09) 274-4603

**P**

NEOPARTS II - Equipamentos, S.A.  
Av. Infante D. Henrique, Lote 35  
1800-218 Lisboa  
☎ 21 8558300

**PL**

Kärcher Sp. z o.o.  
Ul. Stawowa 140  
31-346 Kraków  
☎ (012) 6397-222

**PRC**

Kärcher Cleaning Systems Co., Ltd.  
Part B, Building 30,  
No. 390 Ai Du Road  
Shanghai Waigaoqiao 200131  
☎ (021) 5046-3579

**RO**

Kärcher Romania s.r.l.  
Sos. Odaii Nr. 439  
013606 București  
☎ 0372 709 001

**RUS**

ООО «Керхер»  
109147, Москва  
ул. Таганская, д.34, стр.3  
☎ +7 495 228 39 45

**S**

Kärcher AB  
Tagenevägen 31  
42502 Hisings-Kärä  
☎ (031) 577-300

**SGP**

Kärcher Asia Pacific Pte. Ltd.  
5 Toh Guan Road East  
#01-00 Freight Links  
Express Distripark  
Singapore 608831  
☎ 6897-1811

**SK**

Kärcher Slovakia, s.r.o.  
Beniakova 2  
94901 Nitra  
☎ 037 6555 798

**TR**

Kärcher Servis Ticaret A.S.  
9 Eylül Mahallesi  
307 Sokak No. 6  
Gazimir / Izmir  
☎ (0232) 252-0708

**TWN**

Kärcher Limited  
5F/6. No.7  
Wu-Chuan 1st Rd  
Wu-Ku Industrial Zone  
Taipei County  
☎ (02) 2299-9626

**UA**

Kärcher Ukraine  
Kilzeva doroga, 9  
03191, Kyiv  
☎ (044) 594 75 75

**UAE**

Kärcher FZE  
Jebel Ali Free Zone  
RA 8, XB 1, Jebel Ali, Dubai  
☎ (04) 8836-776

**USA**

Alfred Kärcher, Inc  
2170 Satellite Blvd  
Suite 350  
Duluth, GA 30097  
☎ 678-935-4545; 877-527-2437

**ZA**

Kärcher (Pty.) Limited  
144 Kuschke Street  
Meadowdale  
Edenvale 1614  
☎ (011) 574-5360



**KÄRCHER®**

**www.kärcher.com**