

The right accessories and detergents for your High Pressure Cleaner.



RM: 75T - 0210 - 5364-030 - Printed in Germany on paper bleached without chlorine. Specifications subject to change without prior notice.

Please contact us for more information:

Australia
Kärcher Pty. Ltd.
40 Koornang Road
Scoresby VIC 3179
Victoria

Tel. + 61 3-9765-2300
Fax + 61 3-9765-2399
www.karcher.com.au

New Zealand
Kärcher Ltd.
12 Ron Driver Place
East Tamaki
Auckland

Tel. +64 9-274-4603
Fax +64 9-274-5609
www.karcher.co.nz

Optimally coordinated

Vehicle maintenance



NEW **Folding canister Car Shampoo**
Concentrated cleaning agent in a practical folding canister. For the gentle removal of oil, grease and mineral stains on stone, wood, plastic, glass, metal and vehicle paint.
Order No. 6.295-386.0

NEW **Folding canister Wash & Wax**
2 in 1: car shampoo and conditioning wax in one product. Maintenance components protect the paint, accelerate drying and provide for brilliant results.
Order No. 6.295-387.0

Wheel Cleaner
Removes dust, winter salt and other stains from all types of steel and alloy wheels.
Order No. 6.295-059.0

Insect Remover
Removes insects from painted surfaces, radiator, grills, wing mirrors, windows and plastic surfaces.
Order No. 6.295-377.0

All around the house



Stone and Facade Protector
Highly efficient impregnating spray protecting stone surfaces from soiling and environmental effects for months while simplifying cleaning.
Order No. 6.295-364.0

Wood Protector
Highly efficient impregnating spray protecting wooden garden furniture and decks against dirt and weather for months.
Order No. 6.295-366.0

NEW **Folding canister Patio & Deck**
Concentrated cleaning agent for the gentle removal of oil, grease, mineral stains, soiling from emissions, organics soiling and soot on balconies and patios.
Order No. 6.295-388.0

Universal Cleaner



NEW **Folding Canister Universal Cleaner**
Concentrated cleaning agent. For the gentle removal of oil, grease, mineral stains, soiling from emissions, organic soiling and soot on balconies and patios.
Order No. 6.295-385.0

NEW **The Plug 'n' Clean system for the new X-Range:**
Universal Cleaner RM 555
A powerful all-purpose cleaner for Kärcher pressure washers. Can be used around the house, garden and vehicles. Effortlessly removes oils, grease and mineral stains.
Order No. 6.295-507.0

Kärcher offers much more than High Pressure Cleaners.

Kärcher products for indoors



Cordless Window Vacuum



Steam Cleaner



Cordless Sweeper

Kärcher products for outdoors



Sweeper

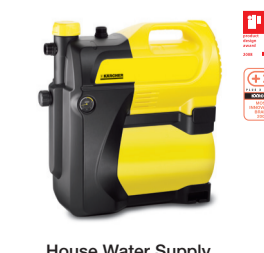


Wet and Dry Vacuum Cleaners

Kärcher products for the garden



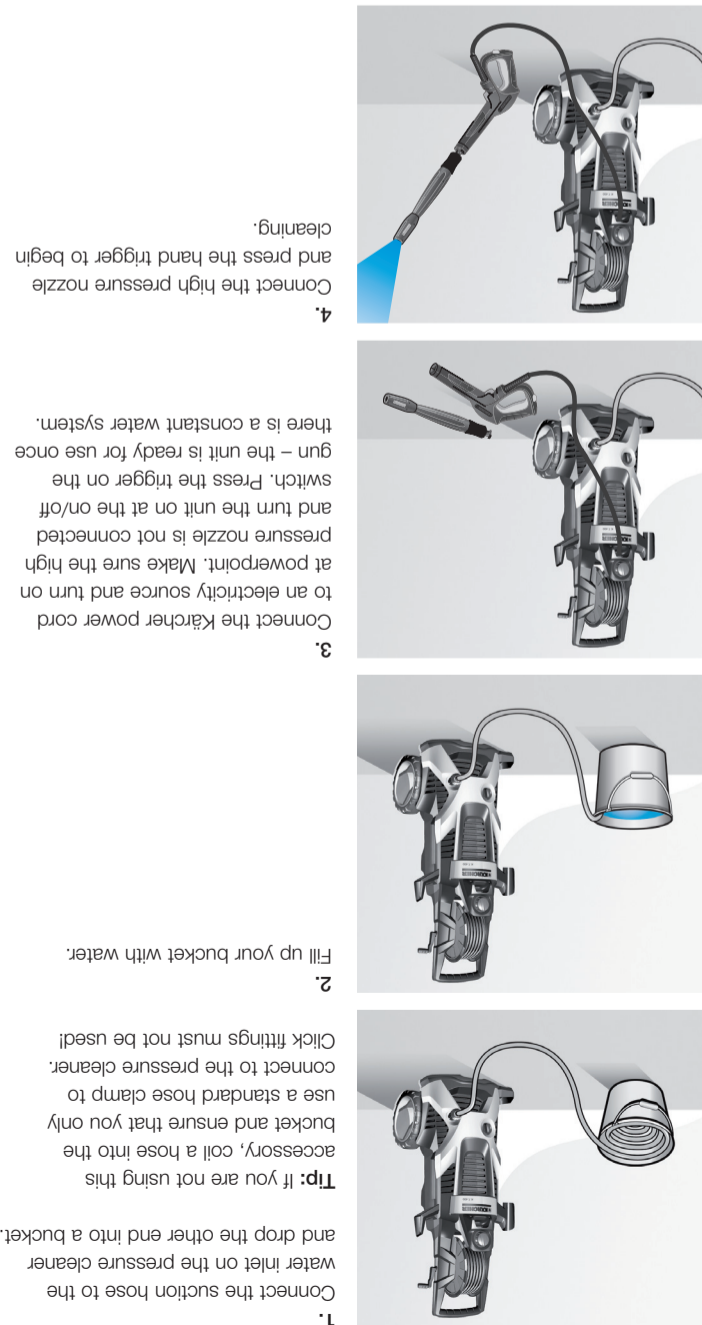
Watering Systems



House Water Supply



Drainage Pump



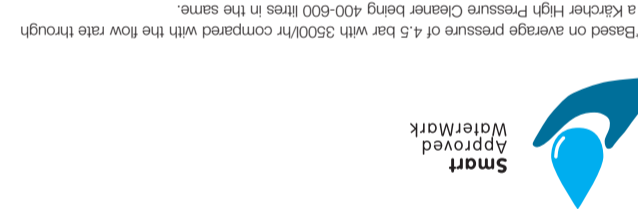
How to draw water from a bucket.

1. Connect the suction hose to the water inlet on the pressure cleaner and drop the other end into a bucket.

2. Tip: If you are not using this accessory, coil a hose into the bucket and ensure that you only use a standard hose clamp to connect to the pressure cleaner. Click fittings must not be used!

3. Fill up your bucket with water. Connect the Kärcher power cord to an electric source and turn on at powerpoint. Make sure the high pressure nozzle is not connected and turn the unit on at the on/off switch. Press the trigger on the gun - the unit is ready for use once there is a constant water system.

4. Connect the high pressure nozzle straight from a water tank or a bucket. This feature allows our units to comply with the law during periods of high-level water restrictions. Kärcher high pressure cleaners are up to 35 times more powerful than your standard garden hose whilst using up to 80% less water. They don't need to be attached to a mains tap, as they can draw water straight from a water tank or a bucket. This feature allows our units to comply with the law during periods of high-level water restrictions.



Smart Approved Watermark

Kärcher High Pressure Cleaners



Achieving exceptional cleaning results - the proof is in a job well done. Environmental friendly - reduced water consumption and the possibility to draw water straight from either a tap, bucket or tank. Extensive Australia and New Zealand wide service network - outstanding service and spare parts availability. Design, Engineering and Technology - high quality. Manufactured at Kärcher's own plants utilising superior German



Kärcher Cleaning of Christ the Redeemer, Brazil




Kärcher Cleaning of Mount Rushmore, USA


Discover the genuine Kärcher yellow, the world's leading brand from in the world famous Kärcher yellow are sold in over 190 countries. In 1935 Alfred Kärcher founded a company which soon became the worldwide leader in cleaning technology. Today our innovative products





www.karcher.com.au
www.karcher.co.nz

Surface cleaners

- 

1 **Hard surface cleaner T-Racer T 400 Plus**
For the splash-free cleaning of even surfaces such as stone and wood patios. With an additional power nozzle for the efficient cleaning of corners and edges.
Order No. 2.641-647.0
- 

2 **Hard surface cleaner T-Racer T 300 Plus**
Particularly suitable for cleaning stone and wood patios. With an additional handle for cleaning vertical surfaces such as garage doors and a special protection grid which even makes it suitable for cleaning gravelled surfaces.
Order No. 2.640-212.0
- 

3 **Hard surface cleaner T-Racer T 250 Plus**
For the splash-free cleaning of even surfaces such as stone and wood patios. With an improved handle for cleaning vertical surfaces such as garage doors.
Order No. 2.642-194.0
- 

4 **Powerscrubber PS 40**
Three integrated high-pressure nozzles effectively and quickly remove even stubborn dirt from every type of surface. Especially well suited for the cleaning of stairs and corners.
Order No. 2.640-865.0

Spray pipes

- 

5 **Vario-Power spray lance**
For infinitely variable pressure control from low-pressure detergent jet to high-pressure jet by simply twisting the spray lance.
K 2 Order No. 4.760-543.0
K 3-4 Order No. 4.760-565.0
K 5-6 Order No. 4.760-545.0
- 

6 **Dirt Blaster**
With rotary nozzle for stubborn dirt, e.g. moss-covered or weathered surfaces and large area coverage.
K 2-4 Order No. 4.763-977.0
K 5-6 Order No. 4.763-228.0
- 

7 **Angled spray lance**
Extra long angled spray lance for convenient cleaning of difficult-to-reach areas, e.g. roof gutters or car underbodies.
Order No. 2.638-817.0
- 

8 **Foam nozzle**
Excellent for dispensing foam by connecting the nozzle to the trigger gun. For an effortless cleaning of every surface.
0,31 Order No. 2.641-848.0
0,61 Order No. 2.641-847.0
- 

9 **3-step lance extension**
Variable spray lance extension with 4 aluminium sections, extends to 90 cm, 1.30 m and 1.70 m.
Order No. 2.639-722.0
- 

10 **Window and conservatory cleaning kit**
Consists of soft, large surface brush, vario joint, wiper, and three-stage spray lance extension for cleaning high, difficult-to-reach areas without a ladder.
Order No. 2.640-771.0
- 

11 **Splash guard for Dirt Blaster**
Reliable protects user from splash water. Especially for cleaning of edges and corners. Pushes on to all Kärcher dirt blasters.
Order No. 2.640-916.0

Brushes and sponges

- 

12 **Soft universal brush**
The brush features soft, gentle bristles, an all-around protector ring and a rubber pad for removing stubborn dirt and an ergonomically shaped handle.
Order No. 2.640-589.0
- 

12 **Soft large-surface brush**
Particularly suitable for cleaning larger surfaces such as cars, caravans, boats, conservatories and roller shutters.
Order No. 2.640-590
- 

13 **Wheel washing brush**
Shape and all-around bristles make it particularly suitable for difficult-to-reach areas and small recesses, such as wheels and bicycle spokes.
Order No. 2.640-699.0
- 

14 **Rotary wash brush with joint**
Features gentle-action rotating bristles, 190° adjustable handle for cleaning difficult-to-reach areas and adjustable speed and cleaning agent control.
Order No. 2.640-907.0
- 

15 **Delta-Racer D 150**
Wash brush with the power of high pressure and a triangular shape for thorough cleaning in corners. Ideally for the splash-free cleaning of sensitive surfaces.
Order No. 2.641-812.0

Special applications

- 

16 **Vario joint**
Infinitely adjustable vario joint up to 180° for comfortable cleaning of difficult-to-reach areas.
Order No. 2.640-733.0
- 

17 **High-pressure extension hose, Quick Connect**
Extends working radius of the high-pressure hose.
K 4-6, 6 m Order No. 2.641-709.0
K 4-6, 10 m Order No. 2.641-710.0
- 

17 **High-pressure extension hose**
High-pressure hose extension for increased flexibility. Robust DN-8 quality hose.
K 2-6, 6 m Order No. 6.390-243.0
K 2-6, 10 m Order No. 6.389-092.0
- 

18 **Suction hose with check valve**
For water intake from ponds, water butts and tanks for operation of pressure cleaner.
5 m Order No. 9.505-779.0
- 

19 **Pipe cleaning kit**
Clears blocked pipes and drains indoors and outdoors with the help of four backwards firing high-pressure jets which propel the hose into the pipes.
7,5 m Order No. 2.637-729.0
15 m Order No. 2.637-767.0
- 

20 **Wet-blasting kit**
Used in conjunction with Kärcher abrasive for removing rust, paint and stubborn dirt.
Order No. 2.638-792.0
- 

21 **Kärcher Organiser**
Convenient and clearly arranged storage of Kärcher accessories. Consisting of 2 modules for flexible mounting options
Order No. 2.641-630.0
- 

Water filter
Prevents dirt particles in contaminated water getting into pump.
Order No. 4.730-059.0