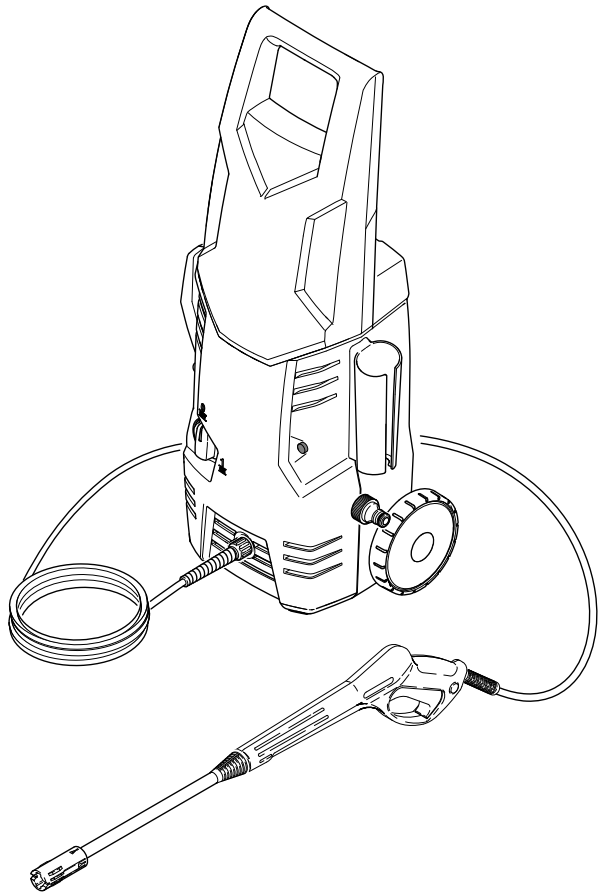


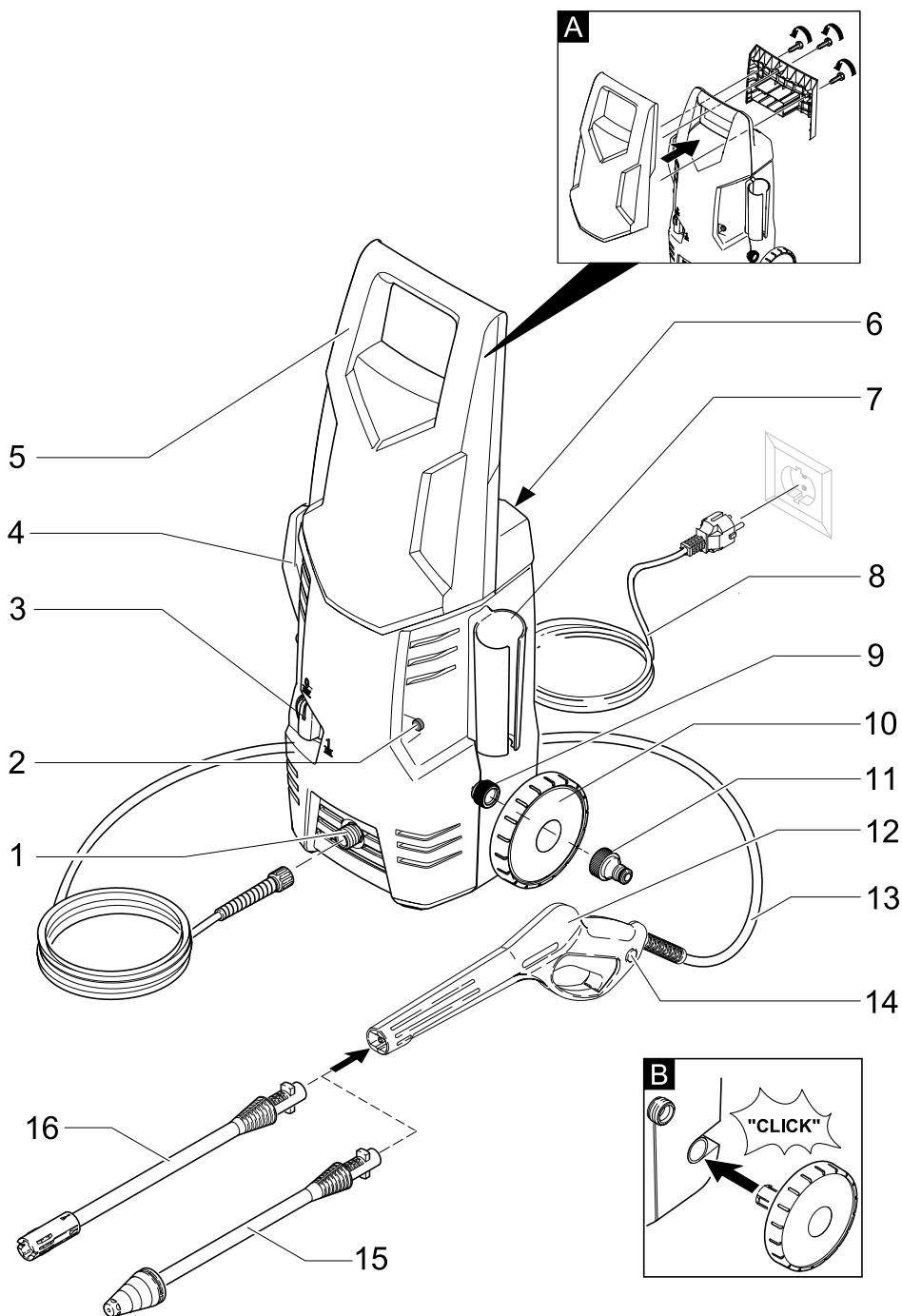


FHR 216



中文	3
English	8





目录

设备图	2
一般事项	3
安全操作说明	3
运行	5
运输	6
保管	6
维修与维护	6
故障帮助	7
产品规格 / 参数	7

一般事项



在您第一次使用您的设备前，请先阅读并遵守本操作说明书原件，为日后使用或其他所有者使用方便请妥善保管本说明书。

按规定使用

本高压清洁剂只限私人家居日用：

- 使用高压喷水清洁机器、汽车、建筑物、工具、墙面、露台、园林工具等（需要时加清洁剂）。

环境保护



包装材料可以回收利用。请不要把包装材料与普通垃圾放在一起处理，而应妥善安排回收。



旧的设备中含有宝贵的可再利用的材料，应加以回收利用。请通过适当的收集系统处理您的旧设备。

质保

本机适用法律规定的质保。

一旦发现故障即行申报投诉。

如系购机人或他人造成，则取消质保要求。

如系处理或操作不当、错误放置或保存、连接或安装不当以及因较强外力或其它外部影响所产生的损坏，一概不在质保范围之内。建议细心阅读操作说明书，因为其中包含了各项重要提示。

购机人在提出质保要求时应提供购机发票。

提示：

- 一旦机器不能正常工作，首先请检查是否由其它原因造成，如断电或使用不当。
- 注意一旦机器发生故障，则无论如何请附上或准备好下列资料：
 - 购机发票
 - 机器名称 / 型号 / 品牌
 - 在描述所产生的故障时尽最大可能准确说明故障。

如要提出质保要求或一旦产生故障，请本人联系购机商店。

设备上的符号

不恰当的使用高压软管可能导致危险。喷射时请勿喷向人员、动物、运作时的电机产品或本产品。



说明书中的符号

⚠ 危险

即刻引发威胁的危险，致使身体严重伤害或死亡。

⚠ 警告

潜藏的危险情况，可能致使身体严重伤害或死亡。

注意

潜藏的危险情况，可能致使身体轻微伤害或损伤。

安全操作说明

⚠ 危险

- 请勿用湿手接触插头和插座。
- 请勿使用损伤的电源线和重要部件（例：高压软管、喷射装置、安全装置等）。
- 每次运行前都要确认插头和电源线是否有损坏。若存在损坏的电源线应立即让已授权的客户服务中心 / 电气专业人员进行更换。
- 使用前确认高压软管是否损伤。损伤的高压软管应立即更换。
- 禁止在存在爆炸危险的空间内运行本设备。
- 在危险区域（如：加油站）使用设备时应遵守相关的安全规定。

- 高压喷枪使用不当，会带来危险。不能对准人、动物、电器设备或者设备自身喷射。
- 清洗服装或鞋子时请勿喷向其他人或自身。
- 请勿喷向可能影响健康的危险物质（例：石棉）或物体。
- 车轮或轮胎气门被高压喷射时可能会因损伤而破裂。相关此类事项首次发生的状态为轮胎褪色。损伤的轮胎 / 轮胎气门是致命的。清洗时请保持最小 30 厘米的喷射距离！
- 爆炸危险！
不得喷射可燃液体。
任何溶解性液体或没稀释的酸性物质和溶解剂不允许吸取！这些物质包括汽油、涂料稀释剂或燃料。这些物质的喷雾存在可燃性、爆炸性和毒性特质。请勿使用与丙酮没有稀释的酸性物质及溶解剂，因为可能造成本设备的损伤。

⚠ 警告

- 电源延长线的插头和结合装置应当防水，勿浸入水中。
- 不适合的电源延长线可能产生危险。仅使用与本设备使用目的相符的带有电源线规格标识的室外用电源延长线。1 - 10 m: 1,5 mm²; 10 - 30 m: 2,5 mm²
- 始终充分松弛电缆卷筒的延长线。
- 高压水管及其接头等附件对清洗机安全很重要。仅使用由制造公司推荐的高压水管及其接头等配件。
- 必须确定设备不能由身体能力有限、感官能力弱或理解能力差的人员操作。儿童或未经指导的人员都不准操作本设备。
应照看好儿童，以确保他们不用设备玩耍。
- 让儿童远离包装薄膜，否则会有窒息危险！
- 本设备应使用制造公司供给或推荐的洗涤剂。使用其他的洗涤剂或化学产品可能影响到本设备的安全性。
- 操作人员应按照规定适当地使用本设备。同时要重视地区情况并在设备工作时严密注意周边人员。
- 在其他人员可能达到的距离内请勿使用本设备，除非配着防护服。
- 逆喷射以前为了防水或灰尘应配着适当的防护服和防护镜。

注意

4 中文

- 若工间休息比较长，关闭设备总开关 / 设备开关或拔下电源插头。
- 该设备在 0 ° C 以下不可驱动。
- 为了清洗已涂装表面的喷射时，保持最小 30 厘米的喷射距离且不会在涂装表面上造成损伤。
- 设备运行中绝对不允许疏忽大意。
- 需要注意的是，不得碾压、挤压、拖拽或通过诸如此类的行为而损坏电源连接线或延长线缆。避免热源、油或者锋利的刀刃从而保护电源线。
- 在设备运行中产生电流的所有部分应严防喷水。
- 本设备只能根据 IEC 60364 规定，由电工连接到电气接口。
- 本设备仅用于交流电源。使用电压应与本设备类型标识相一致。
- 本着安全的原则，我们公司推荐本设备应通过故障电流安全开关（最大电流为 30 毫安）而使用。
- 产生含有油成分废水的清洗作业（发动机 / 车体底部清洗作业等）应只使用配备油分离器的清洗设备。

安全装置

注意

安全装置就是为了保护使用者，因此不允许随意改造或重组。

设备开关

设备开关是防止设备偶然的运作。

水枪板手安全栓

水枪板手安全栓于锁紧状态防止设备偶然的开始运作。

带压力开关的溢流阀

溢流阀阻碍压力超过允许的工作压力。当松开手持喷枪的控制杆，压力开关关闭泵，高压喷射停止。拉上该杆，泵又被开启。

稳定性的必要条件

注意

用设备或在设备上任何作业前要先确保设备的稳定性，以避免事故或故障发生。

- 当设备置放在平坦地面上，其稳定性得以保障。

运行

设备说明

在打开产品包装的同时，请确认设备附件没有缺失，箱内物品没有损坏。如果您发现运输途中造成损坏，请联系经销商。

图片参见第 2 页

- 1 高压接口
- 2 洗涤剂吸取软管（过滤器）
- 3 产品开关“0/OFF” / “I/ON”
- 4 电源线存储架
- 5 便携式手柄
- 6 喷头存储架
- 7 喷枪存储架
- 8 连接线 / 插头
- 9 带滤网的水接口
- 10 轮子
- 11 管接头
- 12 手持喷枪
- 13 高压软管
- 14 喷枪扳手安全栓
- 15 除却杂质喷头
- 16 2 分支喷头

设备运作前

运作前将松弛的部件结合到设备。

图片参见第 2 页

图 A

➔ 插入便携式手柄并紧固。

图 B

➔ 插入运输轮并锁紧。

水供给

根据有效的使用说明规定，该设备在没有系统分离器的情况下不能在饮用水网上使用。应根据 EN 12729 规定，使用合适的 BA 型系统分离器。流经系统分离器的水视为非饮用水。

注意

系统分离器只连接在供水管上，从不要直接连接在机器上！

来自水管的水供给

重视水供给的注意事项。

连接参数详见类型规格标识 / 产品参数。

➔ 使用具备标准结合装置的强化型水软管（不配备）。（直径最小 1/2 英寸或最小 13 毫米；长度最短为 7.5 米）

- ➔ 将结合装置（配备）连接至供水位置。
- ➔ 将供水软管固定至结合装置后连接供水系统。

注意

进水中如有污物，则务必使用 3/4'' 细的水过滤器。

调试设备

注意

干运转（不加润滑油）2 分钟以上会导致高压泵损坏。设备 2 分钟内没有压力形成，关闭设备并按照“故障帮助”一章内的提示进行操作。

- ➔ 将高压软管连接至设备高压软管部位。
- ➔ 将喷头置入喷枪后成 90° 旋转固定。
- ➔ 完全打开水龙头。
- ➔ 插上电源插头。
- ➔ 将设备设定为“I/ON”。

设备运作

⚠ 危险

自高压喷头喷水会带给喷枪逆冲击。为安全起见，请握紧喷枪和喷头。

- ➔ 松开水枪扳手安全栓。
- ➔ 拉水枪扳手启动设备。

注意：松开水枪扳手停止设备。高压残留于系统内。

带双喷嘴的喷射管

- ▬ 低压平喷嘴
低压或使用洗涤剂进行清洁
- ▬ 高压平喷嘴
用于大面积的污染

➔ 松开手持喷枪的手柄，以便选择水束类型，将喷头转到与喷水管道上标记相一致的符号上。工作中该标记必须朝上。

除却杂质喷头

适用于含难处理杂质的清洗作业。
不适合于用洗涤剂的清洗作业。



使用洗涤剂的清洗作业

- 自机壳内拉出所需长度的洗涤剂吸取软管。
- 在洗涤溶液筒中悬挂吸取软管。

推荐的清洗方法

- 在干燥的表面上少量喷射洗涤剂，（在不干透的情况下）发生反应。
- 利用高压喷射方式刷洗被溶解的杂质。

设备运作中断

- 松开水枪扳手。
- 锁住水枪扳手。
- 如，长时间（5 分钟以上）运作中断时，将设备开关设定为“0/OFF”。

设备结束操作

- 使用洗涤剂清洗作业后，在干净水的桶中悬挂吸取软管，约 1 分钟刷洗拔除喷头后运作状态下的装置。
- 松开水枪扳手。
- 将设备设定为关闭“0/OFF”。
- 关闭水龙头。
- 自供水处分离设备。
- 按压水枪扳手以除去在设备系统中残留的压力。
- 锁住水枪扳手。
- 取下插头。
- 妥善保管电源线、高压软管及设备附属品等。

运输

注意

为了避免事故和伤害，搬运时要注意设备的重量（参见技术参数）。

手动搬运

- 握住运输手柄拖动设备。

车辆运输

- 确保设备不会滑倒和倾覆。

保管

注意

为了避免事故和伤害，选择存放地点时要考虑到设备的重量（参见技术参数）。

设备保管

长期存放之前，如在冬季特别要注意维护一章的提示。

- 设备置放在平坦地面上。
- 在喷枪指示插入喷枪。
- 妥善保管电源线、高压软管及设备附属品等。

防霜

注意

设备和附属品的防霜。

在水没有完全排空的情况下，设备和附属品或许会因含霜而破损。防止损伤：

- 完全排空设备内的水：打开不带高压软管和供水连接装置的设备（最大 1 分钟），等待直至无水从高压连接部位出来时。关闭设备。
- 完全配备附属品的设备应在防霜的室内保管。

维修与维护

⚠ 危险

在对设备进行维修与维护之前，必须关闭设备并拔下电源插头。

维护

冬季等长时间保管前：

- 从洗涤剂吸取软管分离过滤器后用水清洗。
- 用扁嘴钳分离微细过滤器后用水清洗。

维护

免费提供设备维修

备件

请只使用原配备件。本操作说明书后面附有一份备件目录。

故障帮助

参考下记的帮助事项可处理很多故障。
存在疑问时请联系本公司认可的客户服务部。

危险

在对设备进行维修与维护之前，必须关闭设备并拔下电源插头。

维修作业和相关电机附件的作业仅应在本公司认可的客户维修部。

设备不运作

- 拉动手持喷枪的控制杆，设备接通。
- 检查电源电压必须跟型号标识上给出的电压一致。
- 检查电源线是否损伤。

设备压力不足

- 设备放气：不连接高压软管接通设备并等待（最多 2 分钟），直至流出高压接口的水没有气泡产生。关闭设备并重新连接上高压软管。
- 检查供水连接系统。
- 用扁嘴钳分离微细过滤器后用水清洗。

强大的压力变化

- 高压清洗：用针除去喷头孔处的杂物，在前面用水清洗。
- 检查供水连接系统。

设备漏水

- 在技术方面可能存在高压泵少许漏水的情况。漏水量较大时请联系本公司认可的客户服务部。

洗涤剂不被吸取

- 检查喷头的设定状态。
- 清洗洗涤剂吸取软管的过滤网。
- 检查洗涤剂吸取软管是否扭曲。

产品规格 / 参数

电气接口

电压	220-240 V 1~50/60 Hz
----	-------------------------

消耗电流	6 A
------	-----

保护程度	IP X5
------	-------

保护等级	II
------	----

保险丝（缓熔型）	10 A
----------	------

水接口

流入温度（最大）	40 ° C
----------	--------

流入量（最小）	8 升 / 分
---------	---------

流入压力	0, 2-1, 2 MPa
------	---------------

功率参数

工作压力	8 MPa
------	-------

最大允许压力	10 MPa
--------	--------

注水比例	5, 25 升 / 分
------	-------------

注入洗涤剂比例	0, 4 升 / 分
---------	------------

喷枪逆喷射能力	10 N
---------	------

音力水准 L_{WA} (2000/14/EG)	92 A 级分贝
----------------------------	----------

尺寸和重量

长度	229 毫米
----	--------

宽度	314 毫米
----	--------

高度	747 毫米
----	--------

重量	5, 5 千克
----	---------

技术参数可能会有变化!

Contents

Illustration of appliance	2
General information	8
Safety instructions	9
Operation	11
Transport	12
Storage	13
Maintenance and care	13
Troubleshooting	14
Technical specifications	14

General information



Please read and comply with these original instructions prior to the initial operation of your appliance and store them for later use or subsequent owners.

Proper use

This high-pressure cleaner is designed for domestic use only:

- to clean machines, vehicles, buildings, tools, facades, terraces, garden equipment etc. using a high-pressure water jet (and detergents if required).

Environmental protection



The packaging material can be recycled. Please do not place the packaging into the ordinary refuse for disposal, but arrange for the proper recycling.



Old appliances contain valuable materials that can be recycled. Please arrange for the proper recycling of old appliances. Please dispose your old appliances using appropriate collection systems.

Guarantee

The statutory guarantee applies to this appliance.

Defects must be reported as soon as they are located.

The guarantee is void if the buyer or a third party has tampered with the appliance.

Damage caused by improper use, incorrect positioning or storage, by improper connection or installation or by a force majeure or other external influences is not covered by the guarantee. We recommend that you read the instructions for use carefully as these contain important information.

The validity of the buyer's guarantee must be demonstrated by production of the proof of purchase.

Notes:

- ➔ If your appliance should cease to operate correctly, first check whether this is due to other causes such as an interruption to the power supply or incorrect operation.
- ➔ Please ensure that you enclose the following documents with your defective appliance, or keep them to hand:
 - Proof of purchase
 - Appliance name/ type / brand
 - Description of the defect that has occurred, detailing the error as precisely as possible.

In guarantee cases or faults, please contact your retailer.

Symbols in the operating instructions

Danger

Immediate danger that can cause severe injury or even death.

Warning

Possible hazardous situation that could lead to severe injury or even death.

Caution

Possible hazardous situation that could lead to mild injury to persons or damage to property.

Safety instructions

⚠ Danger

- *Never touch the mains plug and the socket with wet hands.*
- *The appliance must not be used if the power cord or important parts of the appliance, e.g. high-pressure hoses, trigger gun or safety devices are damaged.*
- *Check the power cord and mains plug for damage before every use. If the power cord is damaged, please arrange for it to be replaced immediately by an authorised repair agent or a skilled electrician*
- *Check the high-pressure hose for damage before every use. Please arrange for the immediate replacement of a damaged high-pressure hose.*
- *The appliance may not be used in areas where a risk of explosion is present.*
- *If the appliance is used in hazardous areas (e.g. filling stations) the corresponding safety provisions must be observed.*
- *High-pressure jets can be dangerous if improperly used. The jet must not be directed at persons, animals, live electrical equipment or at the appliance itself.*
- *The high-pressure jet must not be directed at other persons or directed by the user at him/herself to clean clothing or footwear.*
- *Never use the appliance to clean objects containing hazardous substances (e.g. asbestos).*
- *Vehicle tyres or tyre valves are susceptible to damage from the high-pressure jet and may burst. The first indication of this is a discolouration of the tyre. Damaged vehicle tyres/tyre valves are highly dangerous. Ensure that a distance of at least 30 cm is observed when cleaning with the jet!*
- *Risk of explosion!*
Do not spray flammable liquids.
Never draw in fluids containing solvents or undiluted acids and solvents! This includes petrol, paint thinner and heating

oil. The spray mist thus generated is highly inflammable, explosive and poisonous. Do not use acetone, undiluted acids and solvents as they are damaging to the materials from which the appliance is made.

⚠ Warning

- *The mains plug and the coupling of an extension cable must be watertight and must never lay in the water.*
- *Unsuitable extension cables can be hazardous. Only use extension cables outdoors which have been approved for this purpose and labelled with a sufficient cable cross-section:
1 - 10 m: 1.5 mm²; 10 - 30 m: 2.5 mm²*
- *Always fully unroll electrical cables from the cable drum.*
- *High-pressure hoses, fixtures and couplings are important for the safety of the appliance. Only use high-pressure hoses, fixtures and couplings recommended by the manufacturer.*
- *This appliance is not intended for use by persons with reduced physical, sensory or mental capabilities.*
The appliance must not be operated by children or persons who have not been instructed accordingly.
Children should be supervised to prevent them from playing with the appliance.
- *Keep packaging film away from children - risk of suffocation!*
- *This appliance was designed to be used with detergents which are supplied or recommended by the manufacturer. The use of other detergents or chemicals may compromise the safety of the appliance.*
- *The operator must use the appliance correctly. When working with the appliance, he must consider the local conditions and pay due care and attention to other persons, in particular children, who are nearby.*
- *Do not use the appliance when there are other persons around unless they are also wearing safety equipment.*

- *Wear protective clothing and safety goggles to protect against splash back containing water or dirt.*

Caution

- *In case of extended downtimes, switch the appliance off at the main switch / appliance switch or remove the mains plug.*
- *Do not operate the appliance at temperatures below 0 °C.*
- *Observe a distance of at least 30 cm when using the jet to clean painted surfaces to avoid damaging paintwork.*
- *Never leave the appliance unattended when it is in operation.*
- *Make sure that the power cable or extension cables are not damaged by running over, pinching, dragging or similar. Protect the power cable from heat, oil, and sharp edges.*
- *All current-conducting parts in the working area must be protected against jet water.*
- *The appliance may only be connected to an electrical supply which has been installed in accordance with IEC 60364.*
- *The appliance may only be connected to alternating current. The voltage must correspond with the type plate on the appliance.*
- *For safety reasons, we recommend that you operate the appliance only via a earth-leakage circuit breaker (max. 30 mA).*
- *Cleaning operations which produce oily waste water, e.g. engine washes, underbody washes, may only be carried out using washing stations equipped with an oil separator.*

Symbols on the machine

High-pressure jets can be dangerous if improperly used. The jet must not be directed at persons, animals, live electrical equipment or at the appliance itself.



Safety Devices

Caution

Safety devices protect the user and must not be modified or bypassed.

Power switch

The appliance switch prevents unintentional operation of the appliance.

Lock trigger gun

This lock locks the lever of the trigger gun and prevents the inadvertent start of the appliance.

Overflow valve with pressure switch

The overflow valve prevents the permissible working pressure from being exceeded. If the lever on the trigger gun is released the pressure switch turns off the pump, the high-pressure jet is stopped. If the lever is pulled the pump is turned on again.

Prerequisites for the appliance's stability

Caution

Create stability for the appliance prior to all work on or with the appliance to prevent accidents or damage.

- The stability of the appliance is warranted when it is placed onto an even surface.

Operation

Description of the Appliance

When unpacking the product, make sure that no accessories are missing and that none of the package contents have been damaged. If you detect any transport damages please contact your dealer.

Illustrations on Page 2

- 1 High pressure connection
- 2 Detergent suction hose (with filter)
- 3 Appliance switch "0/OFF"/ „I/ON“
- 4 Storage for mains connection cable
- 5 Transport handle
- 6 Storage for spray lance
- 7 Storage for trigger gun
- 8 Mains cable with mains plug
- 9 Connection for water supply with filter
- 10 Bearing wheel
- 11 Coupling element for water connection
- 12 Trigger gun
- 13 High pressure hose
- 14 Lock trigger gun
- 15 Spray lance with Dirtblaster
- 16 Spray lance with 2-way nozzle

Before Startup

Mount loose parts delivered with appliance prior to start-up.

Illustrations on Page 2

Illustration **A**

- ➔ Insert the transport handle and screw in.

Illustration **B**

- ➔ Insert the transport wheels and lock them.

Water supply

According to the applicable regulations, the appliance must never be used on the drinking water net without a system separator. Use a suitable system separator as per EN 12729 type BA. Water flowing through a system separator is considered non-drinkable.



Caution

Always connect the system separator to the water supply, never directly to the appliance!

Water supply from mains

Observe regulations of water supplier. For connection values, see type plate/technical data.

- ➔ Use a fibre-reinforced water hose (not included) with a standard coupling. (Minimum diameter 1/2 inch (13 mm), minimum length 7.5 m).
- ➔ Screw the coupling element (supplied) to the water connection on the appliance.
- ➔ Push the water supply hose onto the coupling unit, then connect it to the water supply.

Caution

In case of impurities in the supply water, a 3/4" fine water filter must be used.

Start up

Caution

Dry runs lasting longer than two minutes lead to damages to the high pressure pump. If the appliance does not build up pressure within two minutes, switch it off and proceed as instructed in the Chapter "Troubleshooting".

- ➔ Connect the high pressure hose to the high pressure connection of the appliance.
- ➔ Push the spray lance into the trigger gun and fasten it by turning it through 90°.
- ➔ Completely open the water tap.
- ➔ Insert the mains plug into the socket.
- ➔ Turn on the appliance "I/ON".

Operation



Danger

The trigger gun is subjected to a recoil force when the water jet is discharged. Make sure that you have a firm footing and are also holding the trigger gun and spray lance firmly.

- Unlock the lever on the trigger gun.
- Pull on the lever of the trigger gun; the device will switch on.

Note: Release the lever of the trigger gun; the device will switch off again. High pressure remains in the system.

Spray lance with 2-way nozzle

-  Low-pressure flat jet
for low-pressure cleaning or for operation with detergents
-  High-pressure flat jet
for large areas of dirt
- Select spray type: Release the lever on the trigger gun and rotate the nozzle head until the symbol corresponds with the marking on the spray lance. During operation, this marking must be facing upwards.

Spray lance with Dirtblaster

For particularly dirty items or areas.
Not suitable for use with detergents.

Working with detergent

- Pull detergent suction hose as far as is required out of the housing.
- Suspend end of detergent suction hose in a container filled with detergent.

Recommended cleaning method

- Spray the detergent sparingly on the dry surface and allow it to react, but not to dry.
- Spray off loosened dirt with the high-pressure jet.

Interrupting operation

- Release the lever on the trigger gun.
- Lock the lever on the trigger gun.

- During longer breaks (more than 5 minutes), also turn the appliance off using the "0/OFF" switch.

Finish operation

- After working with detergent, suspend detergent suction hose in a container filled with clear water, switch the appliance on for around 1 minute once the spray lance has been removed and rinse until water runs clear.
- Release the lever on the trigger gun.
- Turn off the appliance "0/OFF".
- Turn off tap.
- Detach the appliance from the water supply.
- Press the lever on the trigger gun to release any remaining pressure in the system.
- Lock the lever on the trigger gun.
- Pull out the mains plug.
- Stow away the mains cable, the high-pressure hose and accessory at the appliance.

Transport

Caution

In order to prevent accidents or injuries, keep in mind the weight of the appliance during transport (see Specifications).

When transporting by hand

- Pull the appliance by its transport handle.

When transporting in vehicles

- Secure the appliance against shifting and tipping over.

Storage

Caution

In order to prevent accidents or injuries, keep in mind the weight of the appliance when selecting a storage location for it (see Specifications).

Storing the Appliance

Prior to extended storage periods, as during the winter, also observe the instructions in the Care section.

- ➔ Park the machine on an even surface.
- ➔ Insert the trigger gun in its holder.
- ➔ Stow away the mains cable, the high-pressure hose and accessory at the appliance.

Frost protection

Caution

Protect the appliance and its accessories against frost.

The appliance and its accessories can get destroyed through frost if there are any water residues in them. To avoid damage to them:

- ➔ Completely drain all water from the appliance: Switch the appliance on with detached high-pressure hose and detached water supply (max. 1 minute) and wait, until no more water exits at the high-pressure connection. Turn off the appliance.
- ➔ Store the appliance and the entire accessories in a frost-safe room.

Maintenance and care

Danger

Turn off the appliance and remove the mains plug prior to any care and maintenance work.

Care

Prior to longer periods of storage, e.g. in the winter:

- ➔ Remove filter from suction hose for detergent and clean under running water.
- ➔ Pull out the sieve in the water connection using flat-nose pliers and clean under running water.

Maintenance

The appliance is maintenance-free.

Spare parts

Use only original spare parts. You will find a list of spare parts at the end of these operating instructions.

Troubleshooting

You can rectify minor faults yourself with the help of the following overview.
If in doubt, please consult the authorized customer service.

Danger

Turn off the appliance and remove the mains plug prior to any care and maintenance work.

Repair works may only be performed by the authorized customer service.

Appliance is not running

- ➔ Pull on the lever of the trigger gun; the device will switch on.
- ➔ Check whether the voltage indicated on the type plate corresponds to the voltage of the mains supply.
- ➔ Check the mains connection cable for damages.

Pressure does not build up in the appliance

- ➔ Appliance ventilation: Switch the appliance on with the high-pressure hose detached and operate (max. 2 minutes) until the water exits the high-pressure connection without bubbles. Switch off appliance and reconnect high-pressure hose.
- ➔ Check the water supply.
- ➔ Pull out the sieve in the water connection using flat-nose pliers and clean under running water.

Strong pressure fluctuations

- ➔ Clean high-pressure nozzle: Remove dirt and debris from the nozzle bore, using a needle and rinse through with water from the front.
- ➔ Check water flow quantity.

Appliance is leaking

- ➔ Slight leakage from the appliance pump is normal. If the leakage increases contact the authorized customer service.

No detergent infeed

- ➔ Check setting at the spray lance.
- ➔ Clean the detergent suction hose filter.
- ➔ Check the detergent suction hose for kinks.

Technical specifications

Electrical connection

Voltage	220-240 V 1~50/60 Hz
---------	-------------------------

Power consumption	6 A
-------------------	-----

Protection class	IP X5
------------------	-------

Protective class	II
------------------	----

Mains fuse (slow-blow)	10 A
------------------------	------

Water connection

Max. feed temperature	40 °C
-----------------------	-------

Min. feed volume	8 l/min
------------------	---------

Feed pressure	0,2-1,2 MPa
---------------	-------------

Performance data

Working pressure	8 MPa
------------------	-------

Max. permissible pressure	10 MPa
---------------------------	--------

Water flow rate	5,25 l/min
-----------------	------------

Detergent flow rate	0,4 l/min
---------------------	-----------

Recoil force of trigger gun	10 N
-----------------------------	------

Sound power level L _{WA} (2000/14/EG)	92 dB(A)
---	----------

Dimensions and weights

Length	229 mm
--------	--------

Width	314 mm
-------	--------

Height	747 mm
--------	--------

Weight	5,5 kg
--------	--------

Subject to technical modifications!

