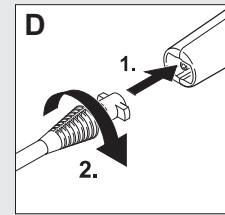
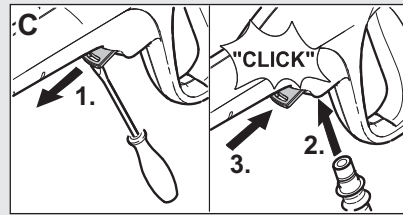
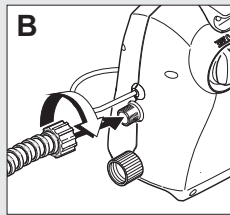
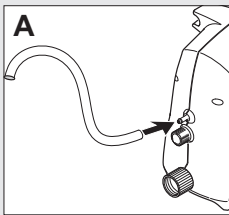
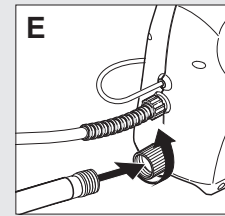
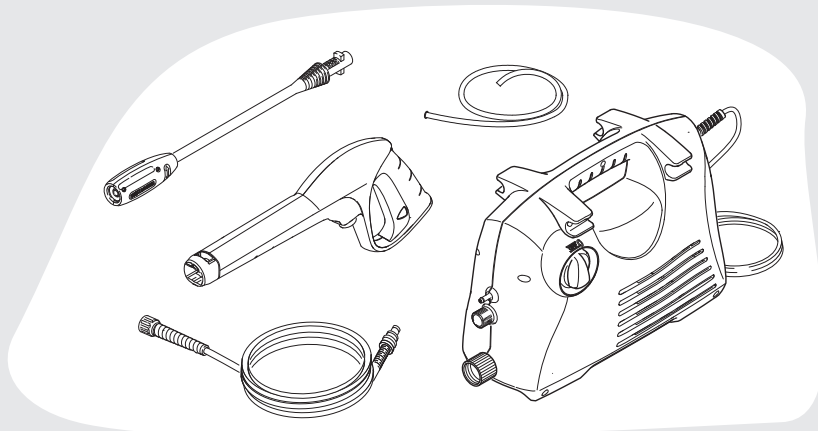
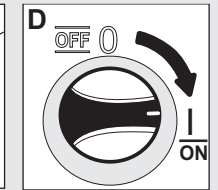
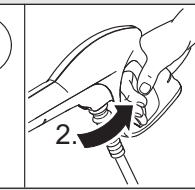
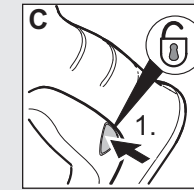
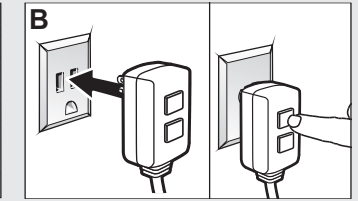
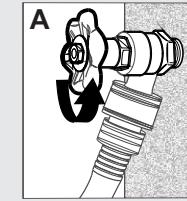


# Quick Start / Guía / Départ Rapide K 2.19

# 1

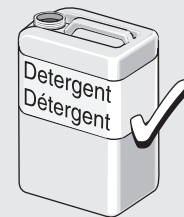
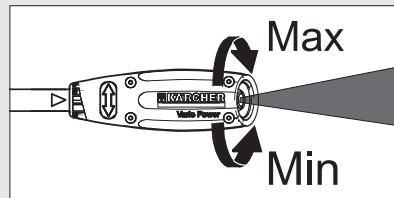


# 2

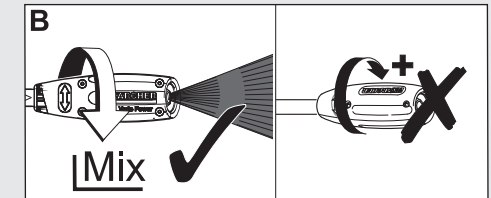
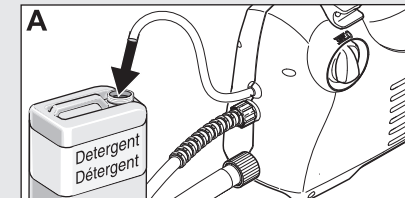


# 3

Working with high pressure  
Trabajar con alta presión  
Travail en mode haute pression



Working with detergent  
Trabajar con detergents  
Travail en détergent



**NOTE:** This guide is not intended as a replacement or substitute for completely reading the owner's manual before using the machine.

**NOTA:** Esta guía no pretende sustituir al manual del usuario y, por tanto, sigue siendo necesario leer éste íntegramente antes de usar la máquina.

**REMARQUE:** Ce guide ne libère nullement l'exploitant de l'obligation de lire le manuel complet avant d'utiliser la machine.



1-800-537-4129

www.karcher-help.com