



register and win!
www.karher.com

 **KÄRCHER**

VC 6300

Operating Instructions

Before first use of the unit
Please read these Operating
Instructions and act in
accordance with them



5.961-995.0 08/07

Dear Customer,



Please read and comply with these instructions prior to the initial operation of your appliance. Retain these operating instructions for future reference or for subsequent possessors.

Proper use	3
Environmental protection	3
Warranty	3
Safety instructions	3
Commissioning and operation	3
Before Commissioning	4
Description of the Appliance	4
Special accessories	4
Start up	6
Suction using accessories	7
Changing the attachments in the Quick-Click attachment housing	7
ComfoGlide nozzle	8
Finish operation	9
Maintenance and Care	9
Cleaning the device	9
Replacing the filter bag	9
Change the motor protection filter	10
Change the HEPA-filter	11
Cleaning of the ComfoGlide nozzle	11
Cleaning the accessories	12
Changing the battery	12
Specifications	12
Help-Line	13
Spare Parts	15

Proper use

This vacuum cleaner is meant for use in private households and not for commercial purposes. The manufacturer is not responsible for any damages that may occur on account of improper use or wrong operations.

Use the vacuum cleaner only with:

- Original filter bags.
- Original spare parts, accessories and special accessories.

The vacuum cleaner is **not** suitable for:

- Suction of:
 - Small living creatures (for e.g. flies, spiders, etc.).
 - Substances that are harmful for health, have sharp edges, are hot or burning.
 - Moist or fluid substances.

Mildly inflammable or explosive materials and gases.

Environmental protection



The packaging material can be recycled. Please do not place the packaging into the ordinary refuse for disposal, but arrange for the proper recycling.



Old appliances contain valuable materials that can be recycled. Please arrange for the proper recycling of old appliances. Batteries and accumulators contain substances that must not enter the environment. Please dispose of your old appliances, batteries and accumulators using appropriate collection systems.

Warranty

The terms of the guarantee applicable in each country have been published by our respective national distributors. We will repair possible faults on your unit free of charge within the warranty period, insofar as the faults are caused by material defects or defective workmanship. Guarantee claims should be addressed to your dealer or the nearest authorized customer service centre, and supported by documentary evidence of purchase.

Safety instructions

- Always commission and use the appliance according to the type plate.
- Never vacuum clean without the filter bag. This can cause damage to the appliance.
- Only allow children to use the appliance under supervision.
- Never point nozzle direct at face.
- Do not use the power cord to carry/ transport the machine.
- Always pull out the power cord fully during operation.
- Turn off at mains, remove plug (do not pull on cable).
- Do not scrape the power cord across sharp edges and ensure that it does not get pressed.

- Turn off at mains, remove plug before carrying out any tasks on the machine.
 - To avoid risks, all repairs and replacement of spare parts in the machine may only be carried out by the authorised customer service personnel.
 - Protect the appliance against external weather, humidity and heat sources.
 - Turn off the appliance while you do not vacuum.
 - Do not use worn out appliance; first put it out of use; then arrange for its proper disposal as scrap.
- 7 Suction control
 - (A) + Key
 - (B) – Key
 - (C) Stand-by Function
 - 8 Telescopic suction pipe
 - 9 Adjustable telescopic suction pipe
 - 10 Floor nozzle
 - 11 Cover attachment housing
 - 12 Attachment housing QuickClick: includes upholstery nozzle, telescopic gap nozzle and a furniture brush
 - 13 Change filter indicator
 - 14 Shutter lever, lid filter bag/ motor protection filter
 - 15 Motor protection filter
 - 16 Filter bag holder
 - 17 Cover HEPA filter
 - 18 HEPA-filter
 - 19 Carrying handle

Commissioning and operation

Please take notice! Put the appliance in its lowest power stage, before turning the appliance on. Afterwards you may select a higher power stage. Refer to chapter "Specifications" for power fuse protection.

Important notice! The appliance will shut-down automatically, if there is danger of overheating. Turn the appliance off and remove power cable from supply. Make sure the nozzle and suction tube are not blocked, replace filter after full check only if necessary. Leave the appliance for 1 hour before using it again.

Before Commissioning

2 Batteries enclosed. Please insert them in the battery compartment below the handle before starting vacuum operations.

- ➔ Slide and remove the battery compartment cover.
- ➔ Insert the batteries, pay attention to the polarity (+ and - marking at the base of the battery compartment).
- ➔ Replace the battery compartment cover and close it.

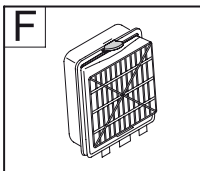
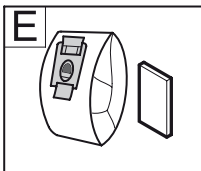
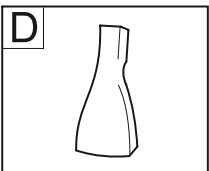
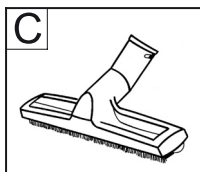
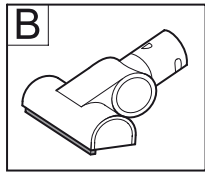
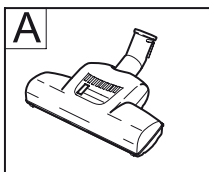
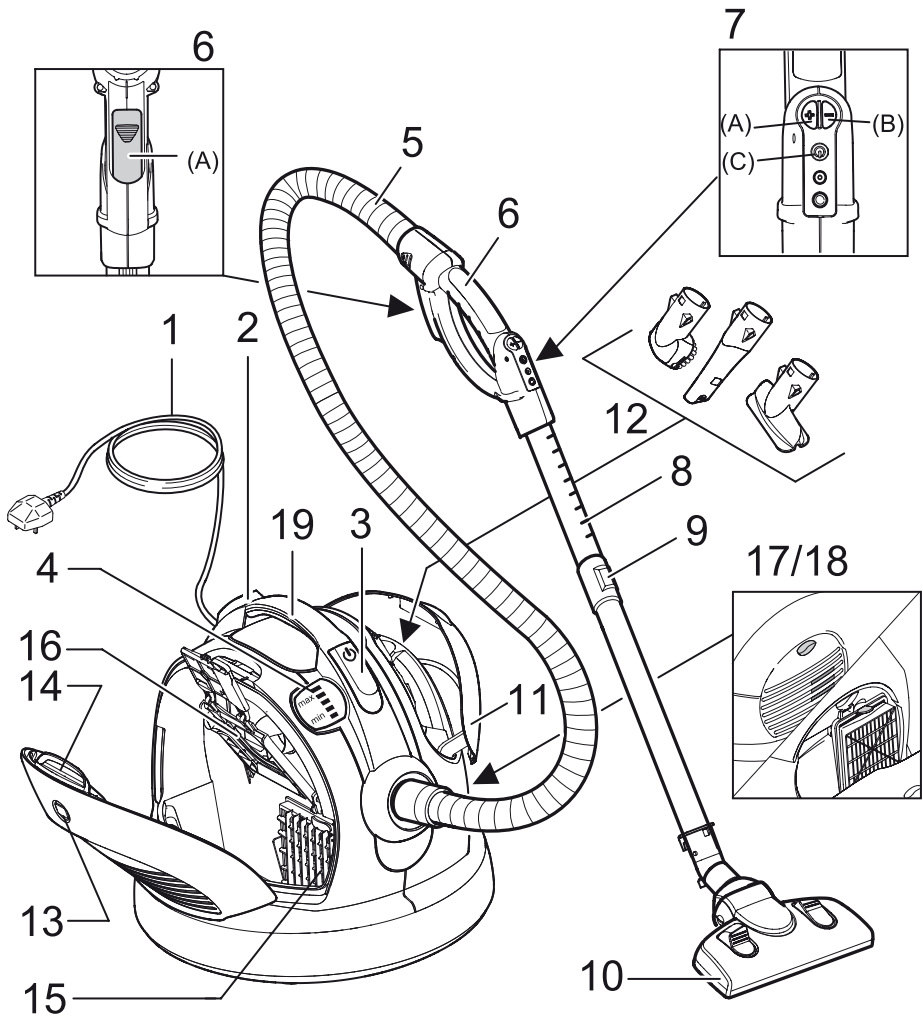
Description of the Appliance

Please see page 5 for diagram!

- 1 Power cord with plug
- 2 Push button to retract cable
- 3 On/Off button
- 4 LED performance display
- 5 Suction hose
- 6 Handle
 - (A) Battery compartment

Special accessories

- A **Turbo nozzle for floors**
(Order no. 4.130-177)
brush and vacuum in one work cycle. Especially suitable in order to pick up animal hair and to vacuum high floor carpets. The brush roller is driven by air steam. There is not electrical outlet necessary.
- B **Turbo nozzle for upholstery**
(Order no. 2.903-001)
Brushing and vacuum cleaning upholstered furniture, mattresses, car seats, etc. in one single step. Especially suitable for absorbing animal hair. The brush rollers are driven by the air current.
No electrical connection required.
- C **Parquet nozzle**
(Order no. 4.130-172)
Used to vacuum sensitive and smooth floors (parquet, marble, terracotta etc.).
- D **Mattress nozzle**
(Order no. 6.906-755)
For absorbing dust from mattresses and upholstery.
- E **Filter bag**
(Order no. 6.904-329)
Content: 5 filter bags with cover and 1 motor protection filter
- F **HEPA-filter**
(Order no. 6.414-805)
Additional filters for cleaner exhausting air. Recommended for allergy sufferers



Start up

Figure 1

- Lock the suction hose neck in the suction opening.
- To take off, push both lock devices together and pull the tube.

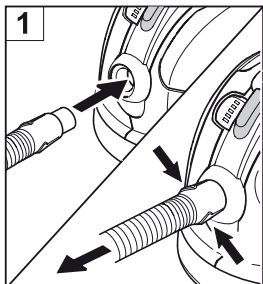


Figure 2

- Connect handle and suction tube and insert.
- Connect the floor nozzle and telescopic suction pipe and insert.

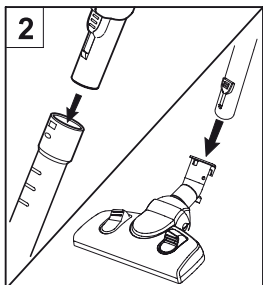


Figure 3

- Use the adjustment in order to adjust the telescopic suction pipe to the length you wish.

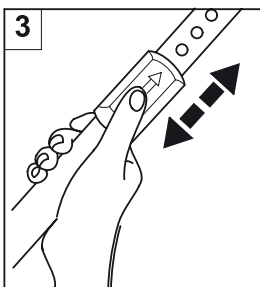


Figure 4

- When you stop or you take a short break, hang the floor nozzle into the parking position on the back of the appliance, and push it into the resting position.

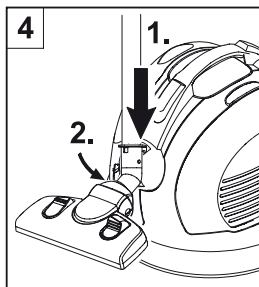


Figure 5

- To remove, press handle backwards in the direction of the appliance. The floor nozzle is thus unlocked from the parking holder and can be removed upwards.

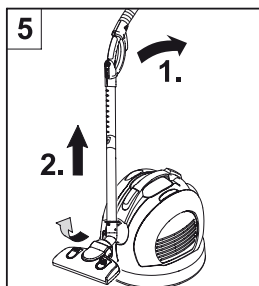


Figure 6

- Hold the power cord at the plug and pull it out. Insert the mains plug into a socket.
- Turn on/off the appliance.

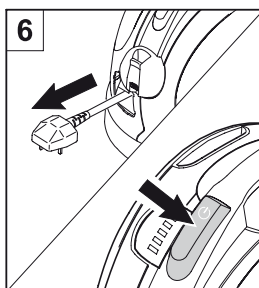
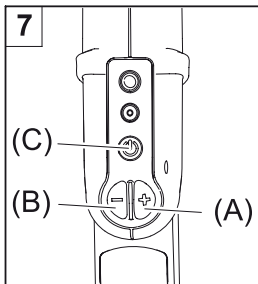


Figure 7

- The power suction adjustment is at the power suction control:
 - + push button (A), higher power suction
 - push button (B), lower suction power



- It is advisable to use the Stand-by key (C) during short breaks in cleaning:
Press the Standby key, the appliance switches off, the LED on the appliance glows to indicate the standby mode.
- Press the Stand-by key again to resume work.
Note: After pressing the stand-by key, the vacuum cleaner runs at the vacuum setting that had been set earlier.

Suction using accessories

Changing the attachments in the QuickClick attachment housing

- Hang the floor nozzle on the backside of the appliance into the parking holder, and push into the pause position.

Figure 8

- Push the dead button at the handle and remove the telescopic suction pipe.

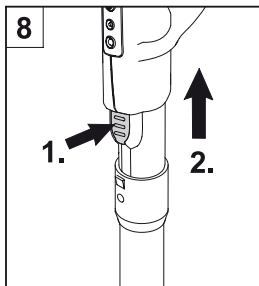


Figure 9

- Open the attachment housing cover.

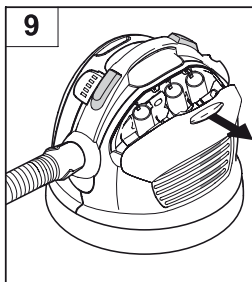


Figure 10

- Insert the handle in the desired accessory until the stop. It then gets locked. Then tilt it downwards and pull it out.

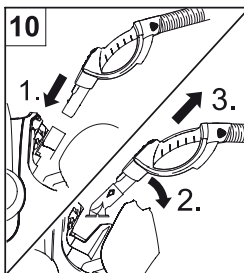
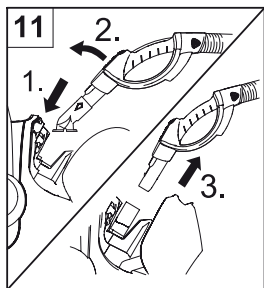


Figure 11

- To store, put the attachment using the handle into the attachment housing and click it up into place. Remove the handle.



- **Notice:** You also can remove the attachment manually and put it on top of the handle. In order to release the attachment, push the dead button on the handle.
- **Notice:** All steps stated above can also be done when the telescopic suction pipe is connected. Hang the floor nozzle on the backside of the appliance into the parking holder, and push into the pause position. Pull the telescopic suction pipe straight up.

ComfoGlide nozzle

Figure 12

- **Carpets and wall-to-wall carpeting:**

Select the knob position as follows:



Reducing the power of the pusher, select the knob position as follows:



Figure 13

- **Hard areas:**

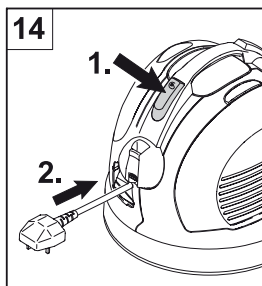
Select the knob position as follows:



Finish operation

Figure 14

- Push the retractable cable button. The cable will pull itself automatically into the appliance.



- Hang the floor nozzle on the backside of the appliance into the parking holder, and push into the pause position.

Maintenance and Care

⚠ Risk of injury

Always switch off the appliance and pull out the mains plug before care and maintenance work.

Cleaning the device

⚠ Caution

Do not use on abrasives, glass or universal cleaners! Never immerse the appliance in water.

- Clean the appliance and accessory parts made of plastic with a commercial plastic cleaner.
- Clean the dust chamber with a dry wipe cloth/ dust brush.

Replacing the filter bag

Note: Separate the telescopic suction pipe from the handle to see the filter change indicator.

Figure 15

- If the filter change indicator in the cover glows red, then please change the filter bag.
- Use the closing lever and open the lid.

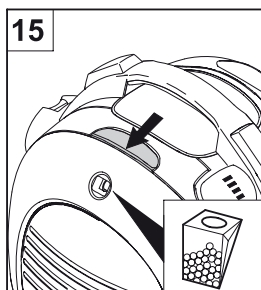


Figure 16

- Unlock the holder of the filter bags and pull towards the outside.

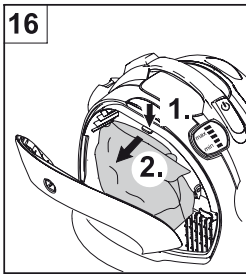


Figure 17

- Close the filter bag using the closing flap, remove the filter bag and dispose it off.

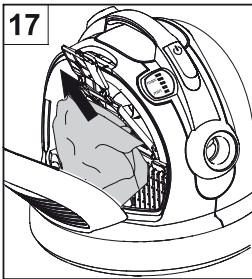
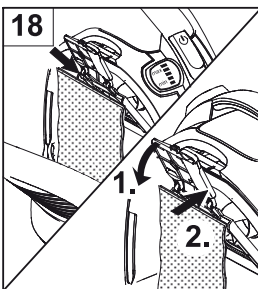


Figure 18

- Push the new filter bag into the support until the stop. First press the flap downwards; then push the holder into the casing and lock it at the appliance casing.



⚠ Caution

Close the lid only, if there is a filter bag fitted, damage will occur if not in place.
 After picking up small dust particle (as for example plaster, cement etc.) clean the motor protection filter, change if necessary.

Change the motor protection filter

Motor protection filter: change before the last filter bag is removed from the filter bag package.

- The motor protection filter is behind the inserted filter bag. Change the motor protection filter before you insert the filter bag.

Figure 19

- Unlock the frame and remove.
- Remove the lower part of the frame, take out old engine protection filter and dispose it off. Insert the new engine protection filter in the frame and replace the lower part of the frame.

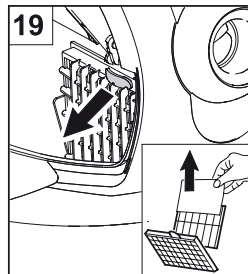
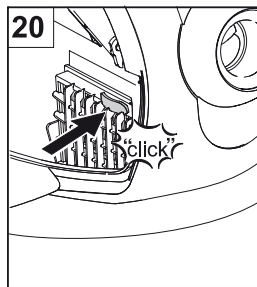


Figure 20

- Insert and click the frame into its place.



Change the HEPA-filter

HEPA filter: Change once a year.

Figure 21

- Open cover.
- Unlock the HEPA filter and remove.

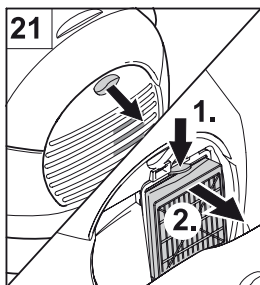
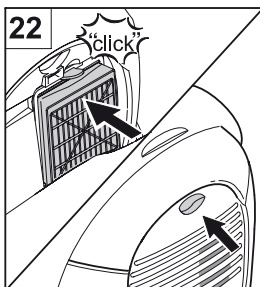


Figure 22

- Insert the new HEPA filter and click it into place.
- Close the lid.



Cleaning of the ComfoGlide nozzle

The ComfoGlide nozzle must be cleaned regularly!

- Remove the nozzle from the suction pipe.

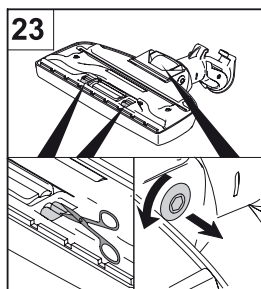
Figure 23

- **Clean the back steering roller:**

The easiest way to do this, is to remove the roller. Unscrew the axle and pull out. Dust fluff, hair etc. can now be removed easily. Fit the steering roller back into place.

- **Cleaning the front star wheels:**

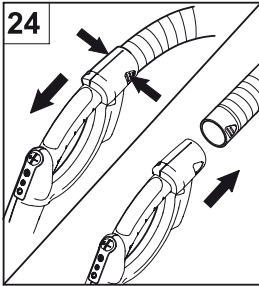
With the aid of a small scissor (e.g a pair of nail scissors). Cut and remove wrapped up hair along the cutting edge. Suctioning any residues with the gap nozzle.



Cleaning the accessories

Figure 24

- Handle and suction tube can be disconnected in order to clean or if clogged. Push the 2 interlocks and pull apart.
- Connect handle and suction tube and insert.



Changing the battery

Note: The battery should be replaced if inadequate reaction when you press the keys.

- Slide and remove the battery compartment cover.
- Remove old batteries and dispose.
- Insert new batteries; pay attention to correct polarity.
- Replace the battery compartment cover and close it.

Specifications

Voltage	V	220 - 240
Current type	Hz	50/60
Power protection, min.	A	13
Output P_{nom}	W	1800
Output P_{max}	W	2000
Weight (without accessories)	kg	7,0
Action radius	m	10
Dimensions	mm	∅ 380 x 380
Nominal width, accessories	mm	35

Subject to technical modifications!

Helpline

Kärcher UK Limited operate a helpline allowing customers to discuss any problems experienced with our products.

The helpline operates during normal business hours. If you have difficulty getting through, please understand that there are peak periods during the day when our consultants are unable to take all calls coming in. In these circumstances we would ask that you try to contact us again later in the day.

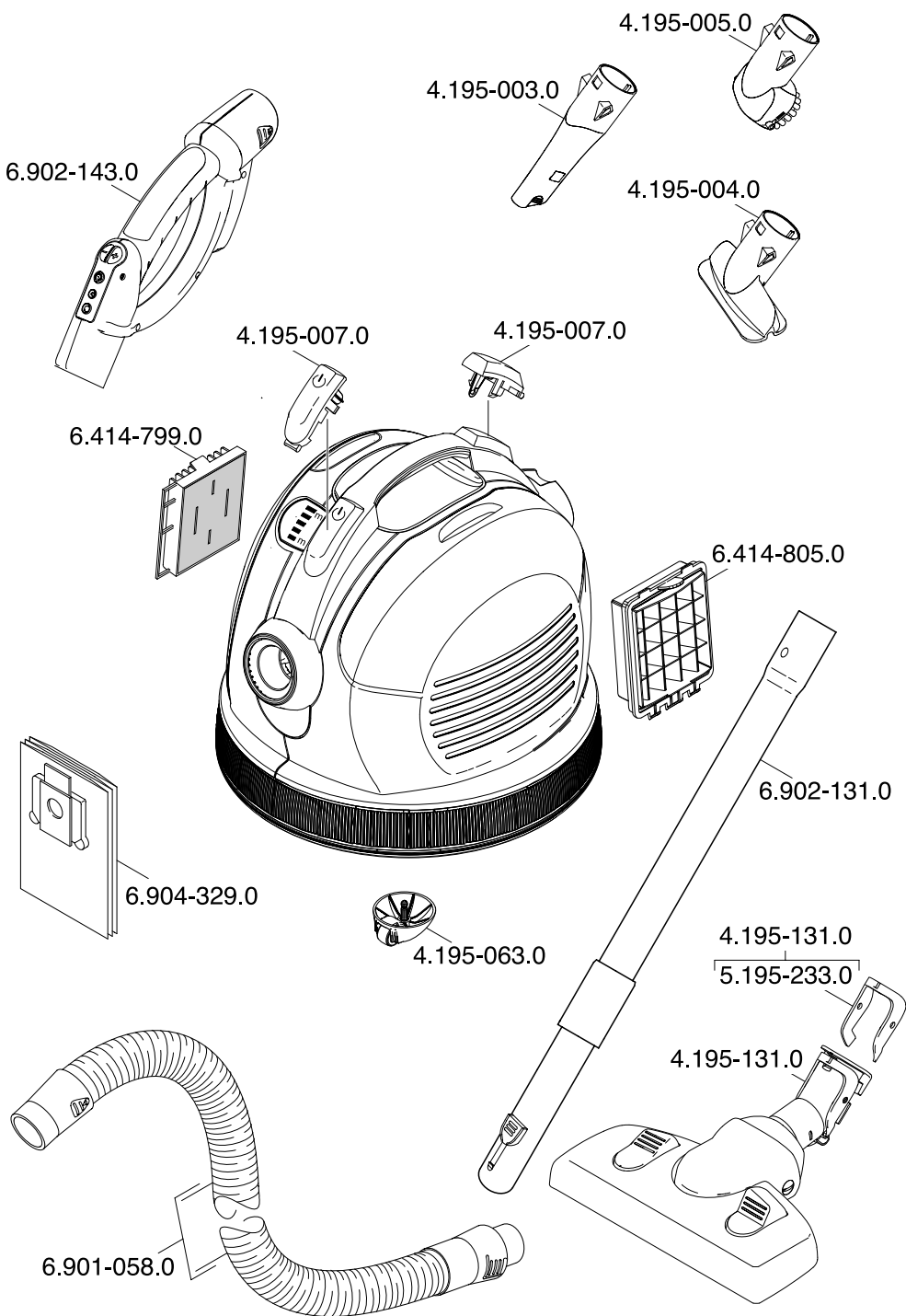
**The helpline number is 01295 752200,
open from 8.30am to 5.00pm
Monday to Friday.**

It helps us if you have the model number and data plate details to hand before making your call so that we can assist you with your query more effectively.

Alternatively you may write to us at the address below:

Kärcher UK Ltd
Kärcher House
Beaumont Road
Banbury
Oxon, OX16 1TB

or E-mail us:
info@karcher.co.uk



5.961-995.0 27.07.2007

