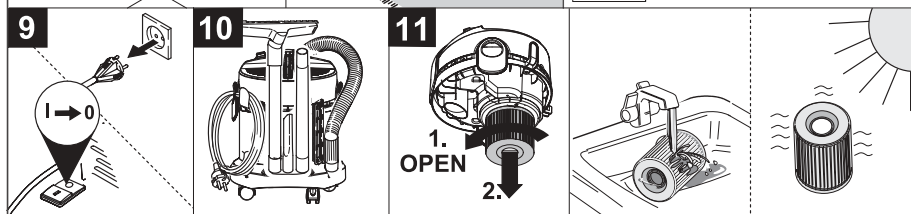
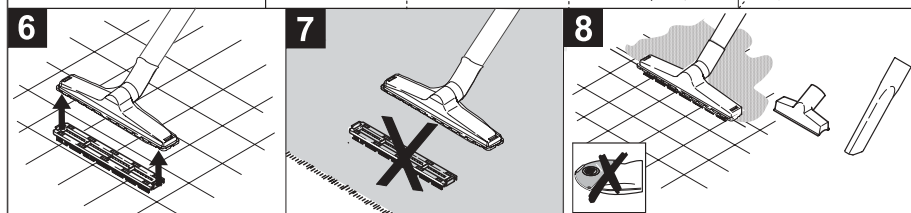
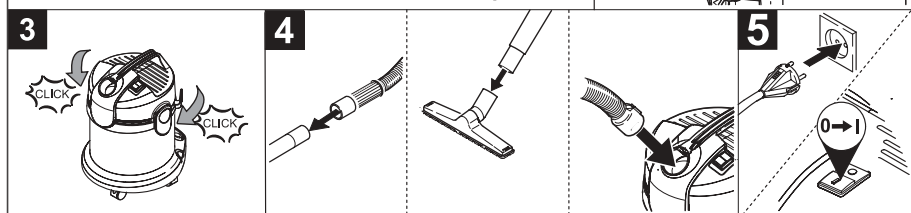
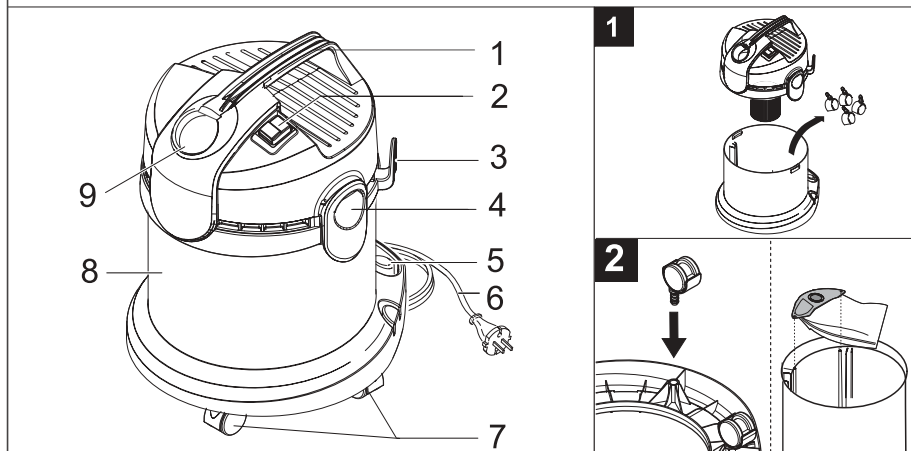
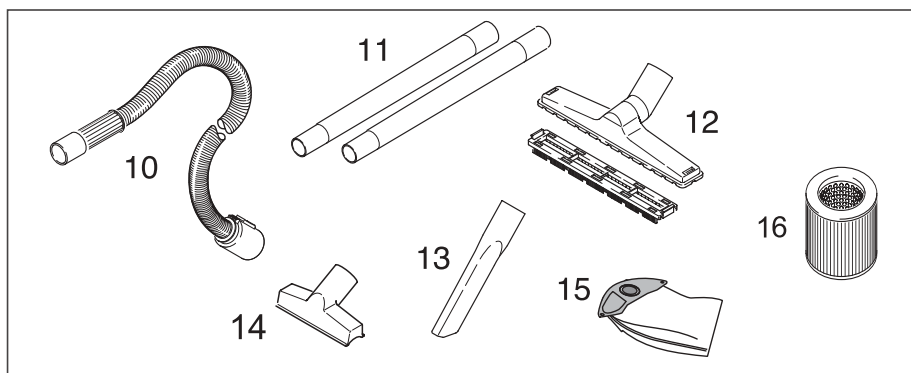


中文	3
English	6



亲爱的客户：



在您使用本设备之前，请阅读并遵守本说明书的内容。请保留说明书，以备将来查阅，或供后来的设备所有者使用。

正确的使用方法

按照本说明书提供的操作说明和相应的安全提示，本设备可以作为干湿两用真空清洁设备使用。

- 您只能在私人区域使用本设备，比如家里、个人兴趣工作室或您的汽车里。
- 在使用本设备时，请您只使用由 Kärcher 批准使用的零配件。

任何超出以上范围的使用都不是正确的使用。对此造成的任何损失，制造商将不承担任何责任；相关责任将由用户本人承担。

环境保护



包装材料可以回收利用。请不要把包装材料与普通垃圾放在一起处理，而应妥善安排回收。



用旧的设备中包含有价值的材料，可以回收利用。电池和蓄电器中所含有的一些物质不能进入自然环境。请通过适当的收集系统处理您用旧的设备、电池和蓄电器。

安全操作说明

- 调试和使用设备时必须遵守铭牌上的要求。
- 儿童必须在他人监督下使用本设备。
- 在使用真空吸尘器时，请避免将管口或吸入管靠近头部。这样做会对您造成伤害！
- 在移动 / 运输本设备时不得使用电源线拖拉。
- 切断机器电源时，请将插头拔下，而不要直接拉电源线。

- 不要让电源线与锐利的边缘划擦，并且确保没有东西压在电源线上。
- 在对机器进行任何操作之前，请务必首先将插头从电源上拔下。
- 为避免发生危险，一切维修以及机器内部零部件的更换，都只能由经过授权的客户服务人员来完成。
- 保护设备免受外部天气、潮湿和热源的影响。
- 在潮湿的房间里（比如浴室），连接设备的插座必须且只能是装有串联漏电保护器的插座。如有任何疑问，请咨询电工。
- 在您不使用真空吸尘器时，请将设备关闭。
- 不要使用破损的设备；请首先停止使用破损设备；然后再将其作为废品适当处理。
- 不要使用真空吸尘器清扫燃烧中的或炽热的物体。
- 存在爆炸危险的区域内不得使用本设备。

⚠ 注意

某些物质在被吸入空气搅动时，可能会生成爆炸性气体或混合物！

不得使用真空吸尘器清扫以下物质：

- 爆炸性或可燃气体、液体或灰尘颗粒（活性灰尘颗粒）
- 与高碱性或高酸性洗涤剂相化合的活性金属颗粒（比如铝、锰、锌等）
- 未经稀释的强碱和强酸
- 有机溶剂（比如汽油、涂料稀释剂、桉酮、民用燃料油等）。

另外，上述物质也会造成设备材料腐蚀。

设备启动前

设备介绍

在打开产品包装的同时，请确认设备附件没有缺失，箱内物品没有损坏。如果您发现运输途中造成损坏，请联系经销商。在包装箱内，您会找到可旋转脚轮。这些脚轮必须安装到设备上。

注意：请参考第 2 页上的设备图和操作图。

- 1 手柄
- 2 开关
- 3 吸入管联接处
- 4 装有夹扣封闭器的电机壳
- 5 电源电缆和插头
- 6 电源线卷线盘
- 7 贮灰桶
- 8 可旋转脚轮
- 9 吸入管及附件的存放室
- 10 吸入软管
- 11 吸入管，2 x 0.5 m
- 12 地板用吸尘头，硬质表面衬垫
- 13 缝隙用吸尘头
- 14 织物用吸尘头
- 15 过滤袋
- 16 过滤筒（插入机器中）

附件的安装

图 1

→ 打开电机壳，取出里面的附件。

图 2

→ 将可旋转脚轮安装到贮灰桶底部。必要时插入过滤袋。

图 3

→ 装上电机壳并锁好。

图 4

→ 连接附件。

设备调试 / 运行

⚠ 无论干式清扫还是湿式清扫，都必须使用嵌入式过滤筒！

图 5

→ 插上电源插头，打开设备开关。

干式清扫

⚠ 必须使用干燥的过滤筒！

→ **因此：**过滤筒必须在完全干燥之后才能使用！

→ 为了对吸入物质进行无尘化处理，我们推荐您使用过滤袋。这样还增加了一个好处，即过滤筒不会很快就被弄脏。

⚠ 添加的过滤袋可能被胀破！

→ 如果您长期使用真空吸尘器清扫细小的灰尘颗粒，那么请尽早更换过滤袋。


→ 在吸入粉尘或锈蚀颗粒时，请使用预分离装置（设备订单编号： 2.863-139）。

图 6

→ **使用真空吸尘器清洁硬质表面：**
请使用硬质表面衬套。

图 7

→ **使用真空吸尘器清洁地毯：**请不要使用硬质表面衬套。

湿式清扫

⚠ 不得使用过滤袋！

⚠ 如果有泡沫或液体溢出，或者贮灰桶已满，请立即关闭设备！

图 8

→ 通过所示附件，真空吸尘器可以清扫液体。

注意：如果贮灰桶已满，浮子会将吸入口遮蔽，从而机器的工作速度加快。此时，请立即关闭设备并清空贮灰桶。

结束操作

图 9

- 关闭设备，拔下电源插头。
- 打开电机壳，清空贮灰桶。

图 10

- 将附件放入设备相应的分隔间内，并将设备存放在干燥的房间里。

维修与维护

伤害危险

在对设备进行维修与维护之前，必须关闭设备并拔下电源插头。

设备与附件的清洁

注意

不得使用研磨剂、玻璃或通用清洁剂！不得将设备浸入水中。

- 请使用商用塑料清洁剂清洗设备及塑料制成的附件。
- 必要时请用清水冲洗贮灰桶和附件，晾干后再使用。

清扫功率下降

如果设备的清扫功率有所下降，请检查以下部件：

- 附件、吸入软管或吸入管被堵塞的，请用木棍将堵塞物掏出。
- 如果过滤袋已满，请插入新的过滤袋（设备订单编号见本说明书末尾的零部件清单）。

图 11

- 过滤筒变脏后，请用自来水清洗，在过滤器完全干燥后再插入。过滤器损坏的，应当进行更换（设备订单编号见本说明书末尾的零部件清单）。

服务

质量保证

我们在各国的经销商已经公布了各国相应的质量保证条款。在质量保证期内，如果您的产品发生了任何故障，我们都将为您提供免费维修，但是这种故障应当是由于机身材料或制造上的缺陷造成的。请您向经销商或者与您距离最近的经过授权的客户服务中心联系，提出保修请求，并提供相应的产品购买证明文件。

客户服务

我们的 Kärcher 分部将非常乐于解答您的提问，帮您处理产品质量问题。地址详见背面。

产品规格

电源电压	220 V
最小功率保护	10 A
贮灰桶容量	12 l
水量	4 l
标称输出功率	900 W
最大输出功率	1100 W
重量（不含附件）	5 kg
声压级(EN 60704-2-1)	73 dB(A)
标称宽度，附件	35 mm

技术参数可能会有变化！

Dear Customer,



Please read and comply with these instructions prior to the initial operation of your appliance. Retain these operating instructions for future reference or for subsequent possessors.

Proper Use

The appliance is intended for use as a wet and dry vacuum cleaner corresponding to the descriptions given in these operating instructions and the safety notes.

- You use this appliance only in the private area, such as in the household, in the hobby workshop or in your car.
- Please use this appliance only with accessories and spare parts approved by Kärcher.

Any use extending beyond this is not considered as proper use. The manufacturer is not liable for any losses resulting from this; the user alone bears the risk for this.

Environmental protection



The packaging material can be recycled. Please do not place the packaging into the ordinary refuse for disposal, but arrange for the proper recycling.



Old appliances contain valuable materials that can be recycled. Please arrange for the proper recycling of old appliances. Batteries and accumulators contain substances that must not enter the environment. Please dispose of your old appliances, batteries and accumulators using appropriate collection systems.

Safety instructions

- Always commission and use the appliance according to the type plate.
- Only allow children to use the appliance under supervision.
- Avoid vacuum cleaning using nozzle or suction tubes close to the head. There is risk of injury!
- Do not use the power cord to carry/transport the machine.

- To separate the machine from the mains, pull the plug and not the power cord.
- Do not scrape the power cord across sharp edges and ensure that it does not get pressed.
- First pull out the plug from the mains before carrying out any tasks on the machine.
- To avoid risks, all repairs and replacement of spare parts in the machine may only be carried out by the authorised customer service personnel.
- Protect the appliance against external weather, humidity and heat sources.
- In wet rooms, e.g. in the bathroom, connect the appliance only to sockets with series connected RCD adapter. In the case of doubt ask an electrician for advice.
- Turn off the appliance while you do not vacuum.
- Do not use worn out appliance; first put it out of use; then arrange for its proper disposal as scrap.
- *Do not vacuum up any burning or glowing*
- *The appliance may not be used in areas where a risk of explosion is present.*

⚠ Caution

Certain materials may produce explosive vapours or mixtures when agitated by the suction air!

Never vacuum up the following materials:

- Explosive or combustible gases, liquids and dust particles (reactive dust particles)
- Reactive metal dust particles (such as aluminium, magnesium, zinc) in combination with highly alkaline or acidic detergents
- Undiluted, strong acids and alkalies
- Organic solvents (such as petrol, paint thinners, acetone, heating oil).

In addition, these substances may cause the appliance materials to corrode.

Before Startup

Description of the Appliance

When unpacking the product, make sure that no accessories are missing and that none of the package contents have been damaged. If you detect any transport damages please contact your dealer. You will find the swivel casters in the container. The swivel casters must be mounted on the appliance.

Note: Please refer to page 2 for figures of the appliance and the operation.

- 1 Carrying handle
- 2 ON/OFF switch
- 3 Storage, power cord
- 4 Motor casing with clip closure
- 5 Storage for suction tubes and accessories
- 6 Mains cable with mains plug
- 7 Swivel casters
- 8 Container
- 9 Suction hose connection
- 10 Suction hose
- 11 Suction tubes 2 x 0.5 m
- 12 Floor nozzle with hard surface insert
- 13 Crevice nozzle
- 14 Upholstery nozzle
- 15 Filter bag
- 16 Cartridge filter (already assembled)

Attaching the Accessories

Figure 1

- Remove the motor casing and take accessories out of the container.

Figure 2

- Fit the swivel casters on the container bottom. Insert filter bag if required.

Figure 3

- Put motor casing onto container and lock it.

Figure 4

- Connect accessories.

Commissioning and operation

- ⚠ **Always work with an inserted cartridge filter - during wet as well as dry vacuum cleaning!**

Figure 5

- Connect the mains plug and turn on the appliance.

Dry vacuum cleaning

- ⚠ **Work only with a dry cartridge filter!**

- **Therefore:** Always let the cartridge filter dry thoroughly before using it!
- For a dust-free disposal of the vacuuming material we recommend to insert the paper filter bag as well. This provides the additional advantage that the cartridge filter will not become contaminated that quickly.

- ⚠ **Added filter bags can burst!**

- Change filter bag earlier if you vacuum cleaning fine dust particles for a longer period.
- Use a preliminary separator while sucking in ash or rust particles (order no. 2.863-139).



Figure 6

- **Vacuum cleaning of hard surfaces:**

Use the hard surface insert.

Figure 7

- **Vacuum cleaning of carpets:**

Work without the hard surface insert.

Wet vacuum cleaning

- ⚠ **Do not use a filter bag!**
- ⚠ **Switch off the appliance immediately if there is foam, liquid escape or if the container is full!**

Figure 8

- Using the accessories shown it is possible to vacuum up liquids.

Note: If the container is full a float closes the suction opening and the appliance works at a higher speed. Switch off the appliance immediately and empty the container.

Finish operation

Figure 9

- Turn off the appliance and disconnect the mains plug.
- Remove the motor casing and empty the dirt container.

Figure 10

- Place the accessories in the appropriate compartments at the appliance and store the appliance in a dry room.

Maintenance and care

Risk of injury

Always switch off the appliance and pull out the mains plug before care and maintenance work.

Cleaning the appliance and accessories

Caution

Do not use abrasives, glass or universal cleaners! Never immerse the appliance in water.

- Clean the appliance and accessory parts made of plastic with a commercial plastic cleaner.
- If necessary, rinse the dirt container and the accessories with water and let dry before using them again.

Decreasing cleaning power

If the cleaning power of the appliance deteriorates please check the following:

- Accessories, suction hose or suction tubes are clogged, please remove the obstruction using a stick.
- Filter bag is full, insert a new filter bag (*for the order no. please see the spare parts list at the end of the present instructions*).

Figure 11

- The cartridge filter is dirty, clean the filter under running water, allow the filter to dry completely before inserting it again. Replace the filter if damaged (*for the or-*

der no. please see the spare parts list at the end of the present instructions).

Service

Warranty

The terms of the guarantee that is applicable in each country have been published by our respective national distributors. Any fault that occurs with your appliance during the guarantee period will be repaired free of charge, provided that it has been caused by a material or manufacturing defect. Guarantee claims should be addressed to your dealer or the nearest authorized customer service depot, and supported by documentary evidence of purchase.

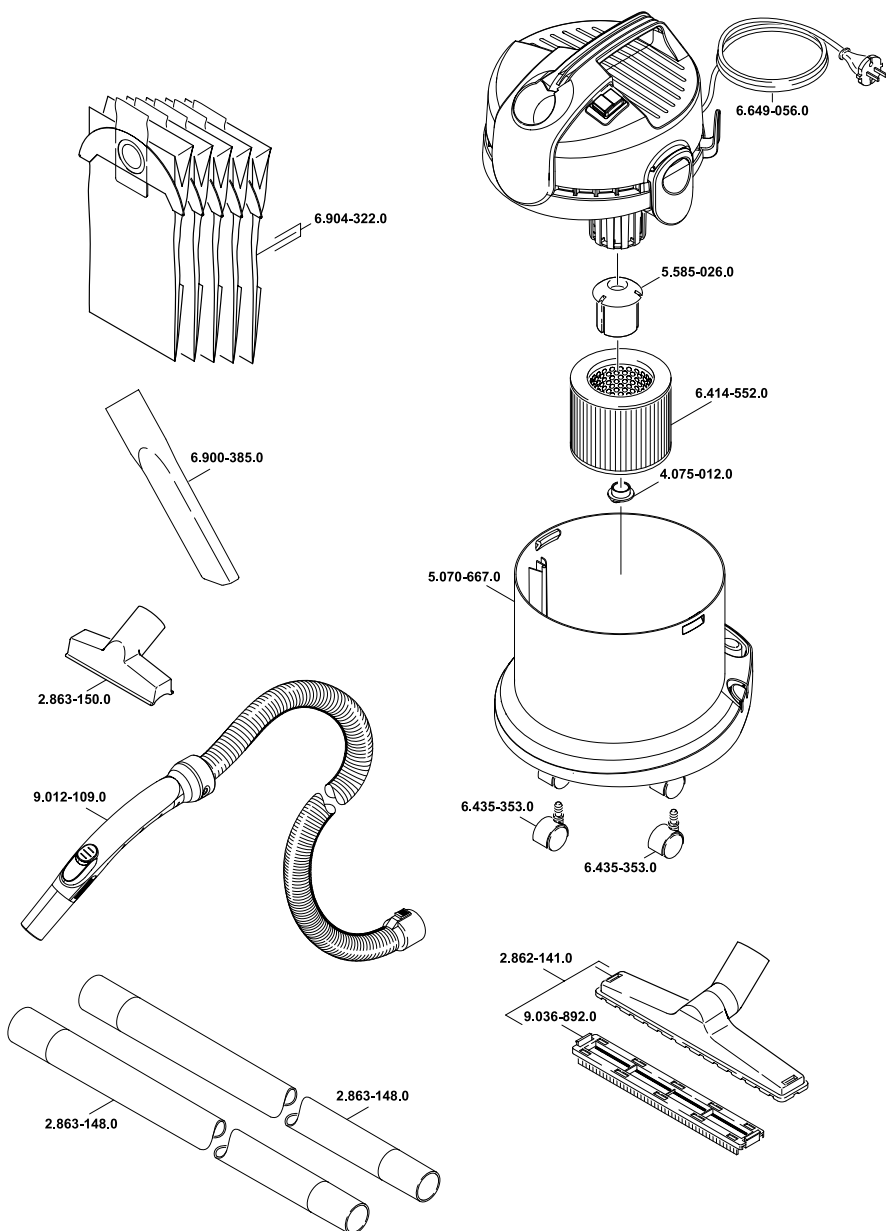
Customer Service

Our Kärcher branch will be pleased to help you further in the case of questions or faults. See address on the reverse.

Specifications

Mains voltage	220 V
Power protection, min.	10 A
Container capacity	12 l
Water volume	4 l
Blower data:	
P _{Nom}	900 W
P _{Max}	1100 W
Power cord: Type	227 IEC 53 (RVV) 2x0,75
Weight (without accessories)	5 kg
Class of protection	II
Sound pressure level (EN 60704-2-1)	73 dB(A)
Nominal width, accessories	35 mm

Subject to technical modifications!



Karcher(Shanghai) Cleaning Systems Co.,Ltd

Part B, Building 30, No.390, Ai Du Road,Shanghai Waigaoqiao
Free Trade Zone, P.R.China, 200131

www.karcher.cn