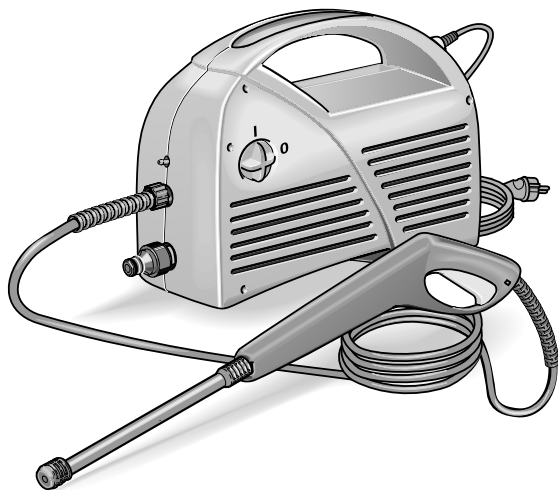




5.961-228 (2007467-06-05)

# Impressor Easy Clean

## Operating Instructions

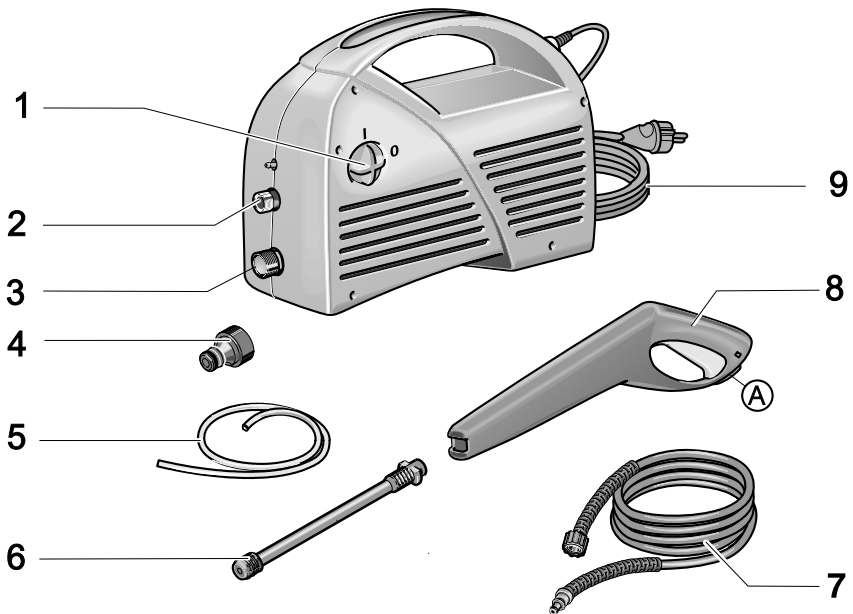
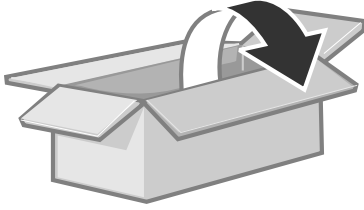




**Before first use of the unit read these operating instructions and act in accordance with them.**

**Keep these operating instructions in a safe place for later use or for a subsequent owner.**

## Overview

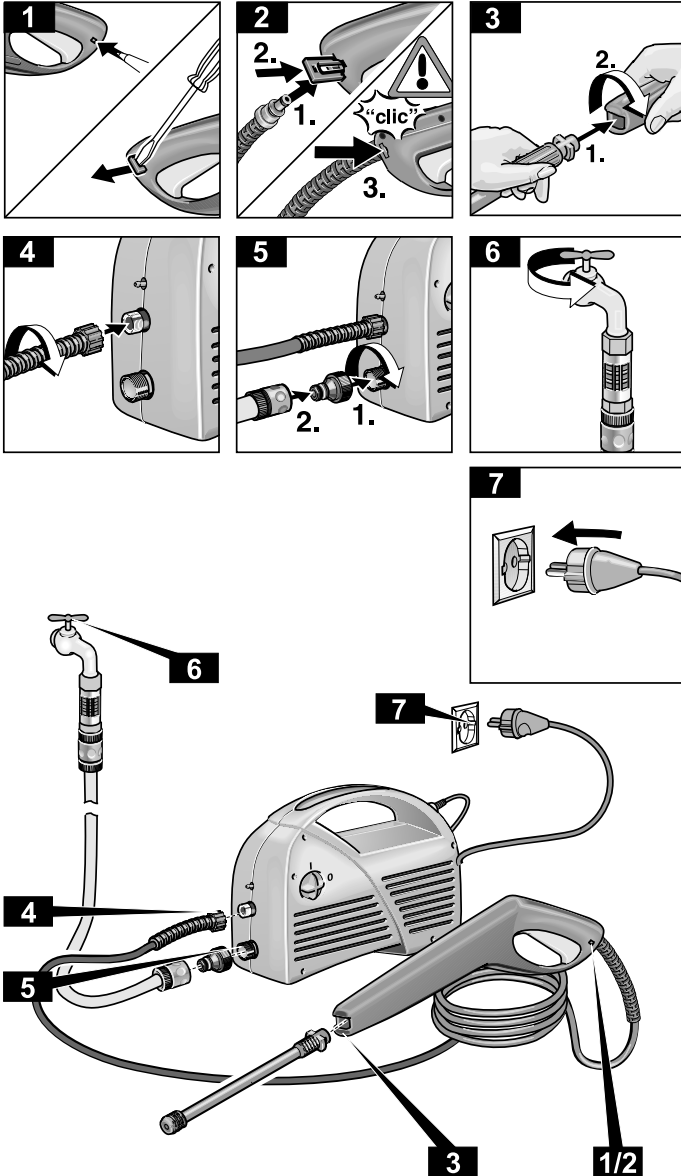


### Items

- 1 Appliance switch (ON/OFF)
- 2 High-pressure outlet
- 3 Water connection with filter
- 4 Coupling
- 5 Detergent suction hose
- 6 Spray lance with high-pressure nozzle
- 7 High-pressure hose
- 8 Handgun with safety catch (A)
- 9 Connection lead

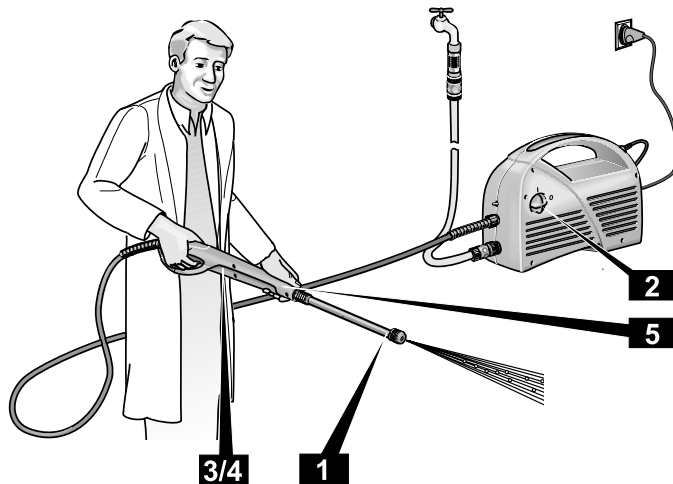
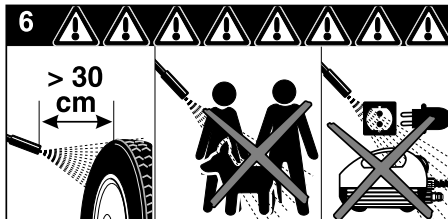
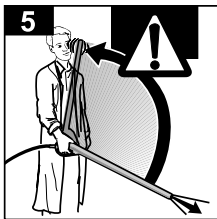
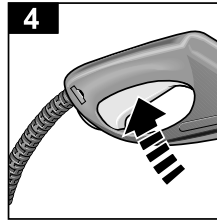
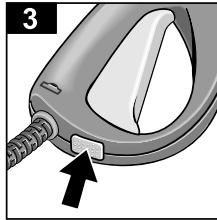
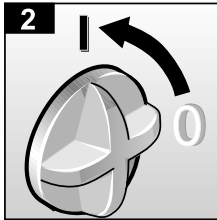
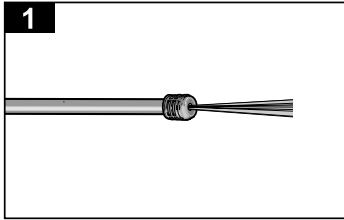
## Preparation

- 1** For additional information see page 8 and following
- 1/2** Spray gun assembly
- 3** Attach spray lance
- 4** Screw on high-pressure hose
- 5** Connect to water inlet
- 6** Open water tap fully
- 7** Plug in power plug



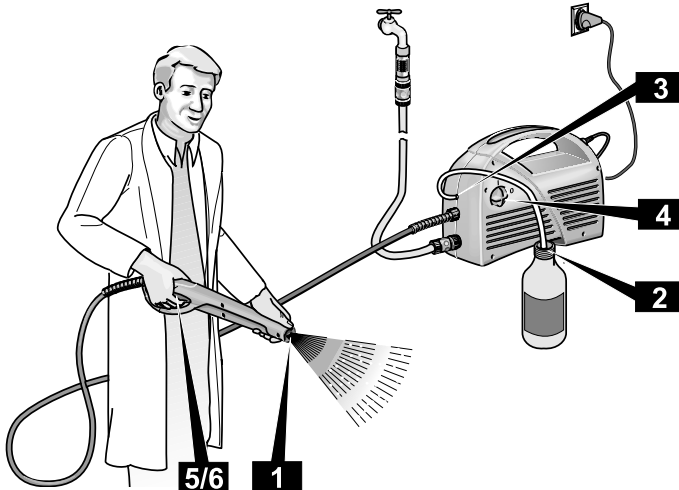
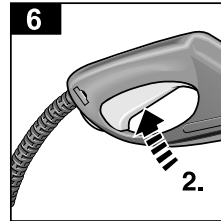
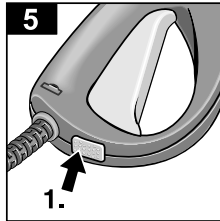
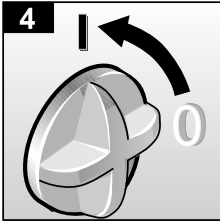
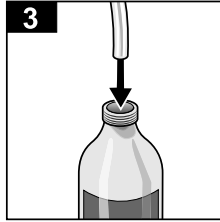
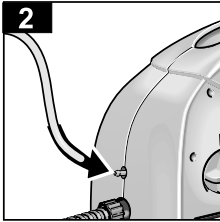
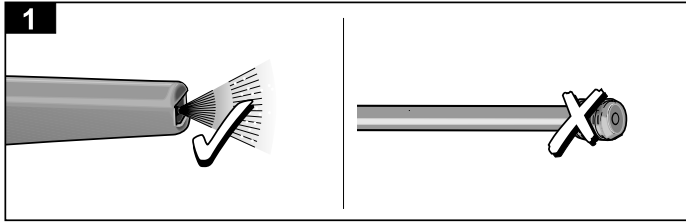
## Operation with high pressure

- 1 Attach spray lance
- 2 Set switch to "I (ON)"
- 3 Release safety catch on handgun
- 4 Press lever
- 5 Caution: recoil
- 6 Safety instructions



## Operation with Detergent

- 1** No detergent in high-pressure mode
- 1** Remove spray lance
- 2** Connect detergent suction hose
- 3** Suspend detergent suction hose in detergent container
- 4** Switch on high-pressure cleaner
- 5** Release safety catch on handgun
- 6** Press lever

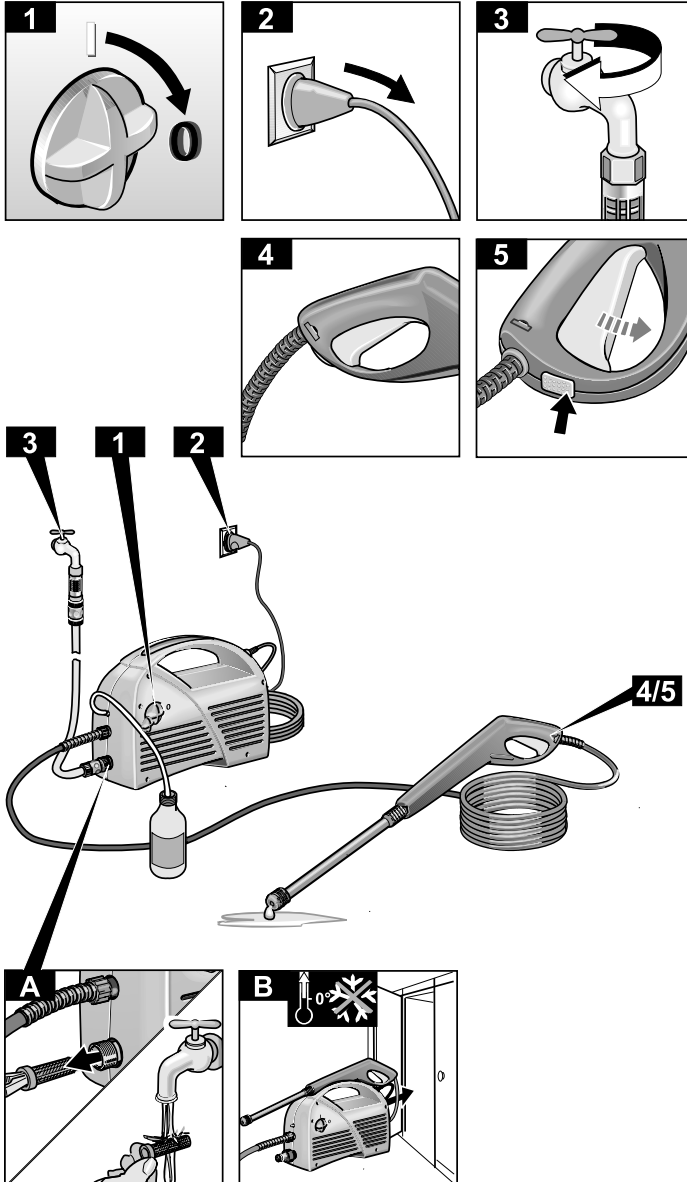


## Finishing the operation

- 1 Unit switch to "0"
- 2 Unplug power plug
- 3 Turn off water tap
- 4 Press lever (to de-pressurise)
- 5 Engage safety catch on handgun

## Care, storage

- A Clean water filter
- B Frost protection



## Before first use

### Use of the unit as authorized

Use this unit exclusively for non-industrial purposes

- for cleaning machines, vehicles, buildings, tools, facades, terraces, garden implements, etc., with high-pressure water jet (if necessary with the addition of cleaning agents).
- for cleaning vehicle engines only in locations equipped with an appropriate oil separator.

### Assembly

When unpacking check the contents. Inform your dealer of any damage in transportation.

### Electrical Connection

- △ The appliance may only be connected to an electrical connection that was performed by an electrician according to IEC 60364.
- △ Only connect the appliance to alternating current. The voltage must comply with the voltage specified on the typeplate.
- △ Minimum fuse protection of the socket 10 A (delay-action fuse).
- △ To avoid electric accidents, we recommend to use sockets with a series connected residual current operated device (rated breaking current max. 30 mA).
- △ **Warning:** Inappropriate extension lines may be dangerous. If you work outside, only use extension lines that are approved and specifically labelled and provide of a sufficient conductor cross section: 1 to 10 m: 1.5 mm<sup>2</sup>  
10 to 30 m: 2.5 mm<sup>2</sup>
- △ The plug and the coupling of an extension line must be waterproof.
- △ Always unwind the extension line completely from the cable drum.
- △ Never use defect connection or extension lines! If the connection line is damaged, it must be replaced with a special connection line that is available from the manufacturer or his customer service.
- △ Please make sure that the connection or extension lines are not damaged by being ran over, pulled or dragged. Protect the connection lines from heat, oil, and sharp edges.

△ Never touch the mains plug and the socket with wet hands.

△ The connection between connection line and extension line must not lie in the water.

△ All current-carrying components within the working area must be jet-proof.

### Water connection

Please observe the provisions of the local water supply company.

① See the typeplate or the section "Technical Data" for the connection values.

△ Only use supply hoses (not included in the delivery) with the following dimensions:

- minimum length 7.5 m
- minimum diameter ½"

△ Impurities in the intake water damage the pump. To prevent this we expressly urge you to use a water filter.

## Safety Instructions

△ The operation of the device in hazardous locations is not admissible.

△ Please comply with the corresponding safety instructions if you use the appliance in danger areas (e.g. filling stations).

△ Do not turn on the appliance if the power supply line or important components of the appliance, such as safety components, high-pressure hoses, spray jet, are damaged.

△ **Warning:** High-pressure hoses, fittings, and couplings are of importance for the appliance safety. Only use high-pressure hoses, fittings, and couplings recommended by the manufacturer.

△ The appliance is not intended for use by young children or infirm persons without supervision.

Young children should be supervised to ensure that they do not play with the appliance.

△ The operator must use the appliance properly. He must take the local conditions into consideration and must pay attention to third persons, in particular children, while working with the appliance.



△ **Warning:** Do not use the appliance if third persons are within the reach of the appliance unless such persons wear protective clothes.

△ **Warning:** High-pressure jets may be dangerous if they are used improperly.

The jet must not be directed at people, animals, active electrical equipment, or the appliance itself.

△ Never direct the jet at yourself or third persons to clean clothes or shoes.

△ Never use the appliance to spray objects containing hazardous substances (e.g. asbestos).

△ **Warning:** Vehicle tyres/tyre valves may be damaged and burst by the high-pressure jet. A first sign is the discoloration of the tyre. Damaged vehicle tyres/tyre valves are hazardous. Always perform the cleaning with a minimum distance of 30 cm.

△ Cleaning operations during which oil saturated waste water is generated, such as engine cleaning and underbody cleaning, may only be performed in cleaning locations that are equipped with an oil separator.

△ If you clean varnished surfaces, please respect a minimum distance of 30 cm to avoid damages.

△ Never take in solvent-containing liquids or undiluted acids and solvents! These include, for example, benzene, paint thinner, or heating oil. The spray is highly inflammable, explosive, and toxic. Do not use acetone, undiluted acids, and solvents as they affect the materials used on the appliance.

△ If required, wear appropriate protective clothes and glasses to protect yourself from return spray.

△ Never leave the appliance unattended as long as it turned on.

△ **Warning:** This appliance has been developed for the use of detergents that are supplied or recommended by the manufacturer. The use of other detergents or chemicals may affect the safety of the appliance.

## **Safety Devices**

Safety devices are intended to ensure the protection from injuries and must not be modified or circumvented.

### Overflow Valve with Pressure Switch

When the lever located on the trigger gun is released, the pressure switch turns off the pump, and the high-pressure jet comes to a stop. When the lever is pulled, the pressure switch turns the pump on again. In addition, the overflow valve ensures that the admissible operating pressure is not exceeded.

### Safety Button

The safety button located on the trigger gun ensures that the appliance is not switched on inadvertently.

## **Environmental protection**

### **Disposal of the packaging**

The packaging material can be recycled. Please do not place the packaging into the ordinary refuse for disposal, but arrange for the proper recycling.

### **Disposal of the old appliance**

Old appliances contain valuable materials that can be recycled. Please arrange for the proper recycling of old appliances. Batteries, oil, and similar substances must not enter the environment. Please dispose of your old appliances using appropriate collection systems.

## Operation

### Preparation

- Attach spray lance to the handgun.
- Screw high-pressure hose on to the high-pressure outlet.
- Connect a supply hose (not included) to the water inlet of the unit and to the water supply (e.g. water tap).
- Open the water supply.

△ *The operation of the high-pressure cleaner with a closed water supply line causes damage to the cylinder head unit. Please never operate the high-pressure cleaner with a closed water supply tap.*

- Insert the mains plug.
- Turn master switch to “1” (ON).

△ *Owing to the water jet emerging from the high-pressure nozzle a recoil force operates on the handgun. Ensure you have a secure footing and hold the handgun and spray lance firmly.*

### Switching on

- Release safety catch on the handgun and pull the lever.

### Switching off

- Release the lever.

During breaks in work and when leaving the unit secure it against inadvertent switching on by pressing the safety catch.

### Adding detergent

- Remove the spray lance from the spray gun.
- ⓘ *No detergent in high-pressure mode.*
- Connect the detergent suction hose to the appliance.
  - Suspend the detergent suction hose in detergent container.
  - After detergent has been added: Suspend the detergent suction hose in a container of clear water, switch on the unit for about one minute and flush through.

### Recommended cleaning method

1. Spray the detergent on the dry surface sparingly and let it react (but not dry out).
2. Wash off the loosened dirt with the high-pressure jet.

## Finishing operations

- Master switch to “0” (OFF).
- Draw out power plug.
- Close the water supply tap.
- Separate the unit from the water connection.
- Pull the lever on the handgun until the unit is without pressure.
- Engage the safety catch to protect the unit against inadvertent switching on.

### Safekeeping

- △ Frost can destroy an incompletely emptied unit. In the winter keep the unit in a frost-free room.
- Separate the spray lance from the handgun.
  - Wind up the power cord and, for example, hang it around the handgun.

## Care and Maintenance

### Cleaning

- Before long periods of storage, e.g. in winter:
- Pull out the strainer in the water inlet with flat-nose pliers and clean it under running water.

### Maintenance

The unit is maintenance-free.

## Help with faults

Faults often have simple causes which you can rectify yourself with the aid of the following summary. In case of doubt or of faults or remedies not mentioned here apply to the authorized customer service.

### **⚠ Danger of electric shock!**

Repair work on the unit can only be carried out by the authorized customer service.

### Appliance does not Work

- Check whether the voltage shown on the rating plate corresponds to that of the power source.
- Check the connector cable for damage.

### Appliance does not reach Operational Pressure

- Vent the appliance: Allow the pump to operate without the high-pressure hose until water appears at the high-pressure outlet without any more bubbles. Then reattach the high-pressure hose.
- Clean the strainer in the water connection.
- Check the inlet water flow rate.
- Check all inlet pipes to the pump for leaks or block-age.

### Strong Pressure Fluctuations

- Clean the high-pressure nozzle. Remove dirt from the nozzle hole with a needle and then rinse out with water from the front.

### Pump Leaks

- 10 drops per minute are permissible. In the case of more serious leakage, you should contact the authorized customer service.

### No Detergent Suction

- Clean the detergent suction hose and check for leaks.

## Technical Data

### **Power supply**

Voltage (at 1~50/60 Hz)	220-240 V
Connected load	1,5 kW
Supply fuses (time-lag)	10 A
Safety class	2, IPX5

### **Water connection**

Supply temperature (max.)	40 °C
Supply volume (min.)	8 l/min
Supply pressure (max.)	1,2 MPa

### **Performance data**

Operating pressure	8 MPa
Max. pump pressure	10 MPa
Flow volume	5,5 l/min
Cleaning agent metering	0,4 l/min
Recoil force of the handgun	12 N
Unit vibrations (ISO 5349)	0,8 m/s <sup>2</sup>
Sound pressure level L <sub>pA</sub> (EN 60704-1)	79 dB(A)
Sound power level L <sub>WA</sub> (2000/14/EC)	92 dB(A)

### **Dimensions**

Length/Width/Height	375/145/250 mm
Weight	3,5 kg

## Replacement parts

Use exclusively original replacement parts.

## Guarantee

In the case of a claim under the guarantee please contact your dealer or the nearest authorized customer service point, accompanying your claim with accessories and purchase voucher.

