



K 2.98 M

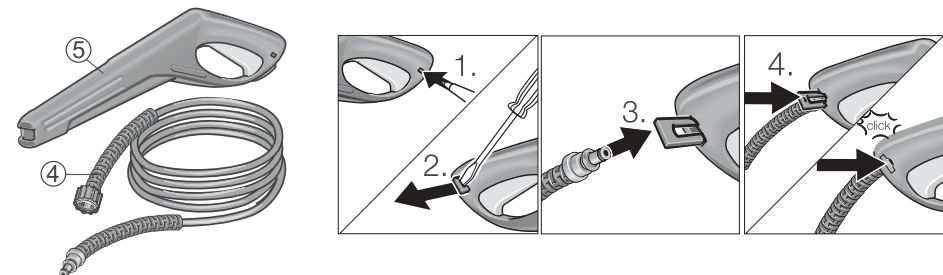
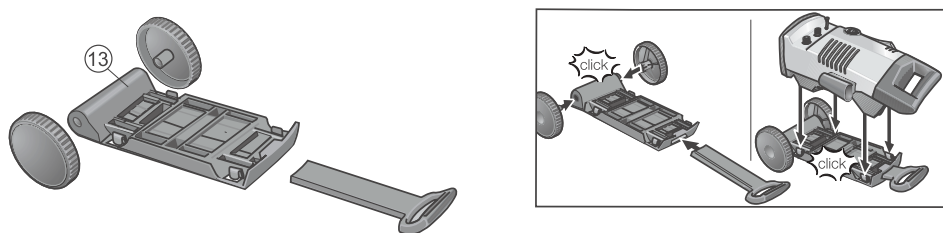
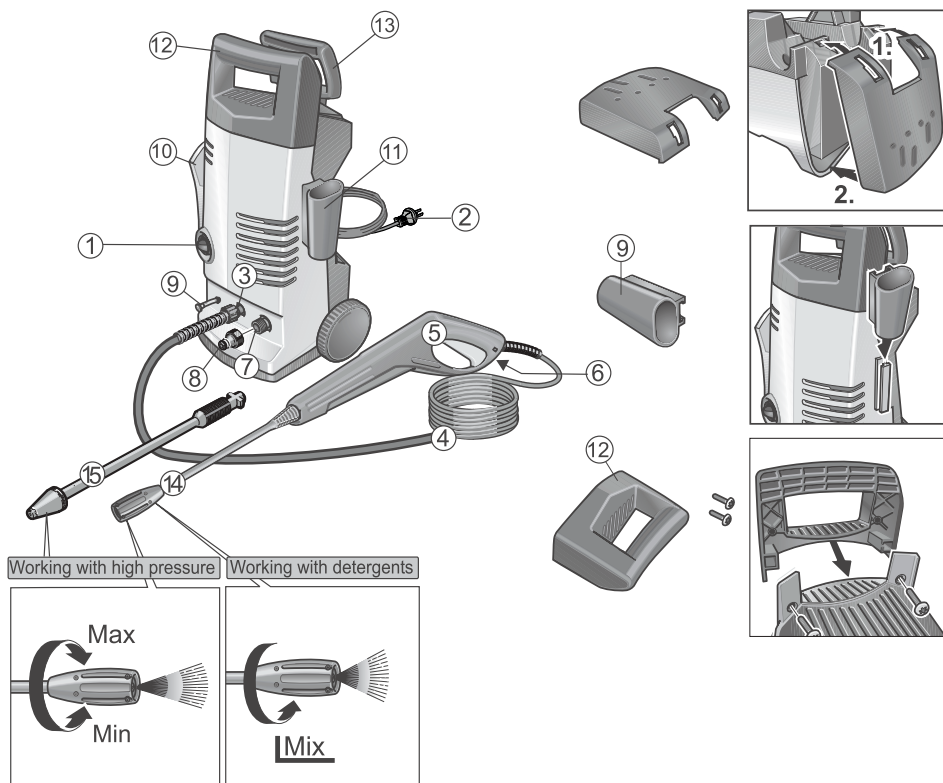


Operating Instructions

Before first use of the unit
Please read these Operating
Instructions and act in ac-
cordance with them



5.961-235.0 05-06



Dear Customer,



Please read and comply with these instructions prior to the initial operation of your appliance. Retain these operating instructions for future reference or for subsequent possessors.

Proper Use

This high-pressure cleaner is designed for domestic use only:

- to clean machines, vehicles, buildings, tools, facades, terraces, garden equipment etc. using a high-pressure water jet (and detergents if required).
- with accessories, replacement parts and detergents approved by Kärcher. Observe the instructions provided with these detergents.

Environmental protection



The packaging material can be recycled. Please do not place the packaging into the ordinary refuse for disposal, but arrange for the proper recycling.



Old appliances contain valuable materials that can be recycled. Please arrange for the proper recycling of old appliances. Please dispose your old appliances using appropriate collection systems.

Warranty

The terms of the guarantee applicable in each country have been published by our respective national distributors. We will repair possible faults on your unit free of charge within the warranty period, insofar as the faults are caused by material defects or defective workmanship. Guarantee claims should be addressed to your dealer or the nearest authorized customer service centre, and supported by documentary evidence of purchase.

Safety instructions

Danger

- *Never touch the mains plug and the socket with wet hands.*
- *The appliance must not be used if the power cable or important parts of the appliance, e.g. safety devices, high-pressure hoses, spray guns, are damaged.*
- *The appliance may not be used in areas where a risk of explosion is present.*
- *If the appliance is used in hazardous areas (e.g. filling stations) the corresponding safety provisions must be observed.*
- *Check the power cord with mains plug for damage before every use. If the power cord is damaged, please arrange immediately for the exchange by an authorized customer service or a skilled electrician.*



- *High-pressure jets can be dangerous if improperly used. The jet must not be directed at persons, animals, live electrical equipment or at the appliance itself.*
- *The jet must not be directed at other persons or directed by the user at him/herself to clean clothing or footwear.*
- *Never use the appliance to clean objects containing hazardous substances (e.g. asbestos).*
- *Vehicle tyres or tyre valves are susceptible to damage from the high-pressure jet and may burst. The first indication of this is a discolouration of the tyre. Damaged vehicle tyres/tyre valves are highly dangerous. Ensure that a distance of at least 30 cm is observed when cleaning with the jet!*
- *Never draw in fluids containing solvents or undiluted acids and solvents! This includes petrol, paint thinner and heating oil. The spray mist thus generated is*

highly inflammable, explosive and poisonous. Do not use acetone, undiluted acids and solvents as they are aggressive towards the materials from which the appliance is made.

Warning

- *Unsuitable extension cables can be hazardous. Only use extension cables outdoors which have been approved for this purpose and labelled with a sufficient cable cross section:
1 - 10 m: 1,5 mm²
10 - 30 m: 2,5 mm²*
- *Check the high-pressure hose for damage before every use. Please arrange for the immediate exchange of a damaged high-pressure hose.*
- *High-pressure hoses, fixtures and couplings are important for the safety of the appliance. Only use high-pressure hoses, fixtures and couplings recommended by the manufacturer.*
- *Cleaning operations which produce oily waste water, e.g. engine washes, underbody washes, may only be carried out using washing stations equipped with an oil separator.*

Note

- *The appliance must not be operated by children or persons who have not been instructed accordingly.*
- *Young children should be supervised to ensure that they do not play with the appliance.*
- *The operator must use the appliance properly. When working with the appliance, he must consider the local conditions and pay due care and attention to other persons, in particular children, who are nearby.*
- *Observe a distance of at least 30 cm when using the jet to clean painted surfaces to avoid damaging paintwork.*
- *Wear protective clothing and safety goggles to protect against back spray containing water or dirt.*

- *Never leave the appliance unattended when it is in operation.*
- *This appliance was designed to be used with detergents which are supplied or recommended by the manufacturer. The use of other detergents or chemicals may compromise the safety of the appliance.*
- *Make sure that the power cable or extension cables are not damaged by running over, pinching, dragging or similar. Protect the power cable from heat, oil, and sharp edges.*
- *The connection between the power cable and extension cable must not lie in water.*
- *All current-conducting parts in the working area must be protected against jet water.*
- *The appliance may only be connected to an electrical supply which has been installed in accordance with IEC 60364.*
- *The appliance may only be connected to alternating current. The voltage must correspond with the type plate on the appliance.*
- *The minimum fuse rating required at the socket outlet is 10 A (slow-blow).*
- *To avoid accidents due to electrical faults we recommend the use of sockets with a line-side current-limiting circuit breaker (max. 30 mA nominal tripping current).*
- *The plug and coupling of the extension cable used must be watertight.*
- *Always fully unroll electrical cables from the cable drum.*

Safety Devices

Safety devices prevent injury and may not be modified or bypassed.

Unit switch

The switch prevents unintended starting of the appliance. Stop the appliance during breaks or after operation.

Safety catch

The safety catch on the handgun prevents the appliance from being switched on unintentionally.

Startup/Operation

Definition of abbreviations used:

HP	=	High pressure
DT	=	Detergent

Description of the Appliance

When unpacking the product, make sure that no accessories are missing and that none of the package contents have been damaged. If you detect any transport damages please contact your dealer.

Illustrations on Page 2

- 1 ON/OFF switch for appliance
- 2 Power cord
- 3 High-pressure outlet
- 4 High pressure hose
- 5 Hand spraygun
- 6 Safety catch
- 7 Water connection with sieve
- 8 Coupling element for water connection
- 9 Cleaning agent suction tube with filter
- 10 Accessory mount
- 11 Accessory mount, handspray gun
- 12 Carrying handle
- 13 Trolley
- 14 Spray lance with pressure regulation (Vario Power)
- 15 Spray lance with dirt blaster

Before Commissioning

Before start up, please assemble the parts as shown in the illustrations on page 2.

Water supply

Water supply from mains

For connection values, see type plate/technical data.

Observe regulations of water supplier.

- Use a fibre-reinforced hose (not included) with a standard coupling: - Minimum diameter, 1/2 inches (13 mm). - Minimum length, 7.5 m.
- Screw the coupling unit (supplied) to the water connection on the appliance.
- Push the water supply hose onto the coupling unit, then connect it to the tap.

⚠ Caution

Never operate the high-pressure cleaner when the tap is turned off as dry running will damage the HP pump.

If the water supply is not clean, the Kärcher water filter must be used (special accessory - order No. 4.730-059).

Drawing in water from open reservoirs

When fitted with the appropriate accessories, this high-pressure cleaner can draw in surface water, e.g. from water butts or ponds (max. suction height 0.5 m).

- Use the Kärcher water filter to protect the HP pump and accessories (special accessories, order no. 4.730-059). This filter removes dirt from incoming water.
- As the standard coupling system is not suitable for use in suction mode, the Kärcher suction hose with integrated filter should be used instead (special accessory, order no. 4.440-238) and suspended inside the water butt.
- Remove air from appliance before operation: Switch on the appliance when the HP hose is not connected and run it until the water which discharges from the HP outlet is free of bubbles. Switch off appliance and connect HP hose.

Note: The appliance deaerates faster if you first fill the suction hose with water.

Start up

- Screw HP hose on to HP outlet on appliance.
- Push the appropriate spray lance on to the handgun and fasten it by turning it to the right through 90°.
- Open tap.
- Plug in mains plug.
- Set main switch to "I/ON".
- Press safety catch on the handgun to release it and pull lever.

High pressure operation

Risk of injury

The handgun is subjected to a recoil force when the water jet is discharged. Make sure that you have a firm footing and are also holding the handgun and spray lance firmly.

Spray lance with pressure regulation (Vario Power)

Carrying out the most common cleaning tasks. The work pressure can be stagelessly regulated between "Min" and "Max".

- Release the lever on the hand-spray gun.
- Turn the spray lance to the desired position.

Spray lance with dirt blaster

For strong contaminations.

Operation with detergent

Note:

Detergent can only be added when the appliance is being operated in low pressure mode.

All washing brushes supplied by Kärcher are designed for use with detergents.

- Use spray lance with pressure regulation (Vario Power).
- Turn the spray lance to "Mix" position - low pressure.

DT take-up from container

- Pull the required length of the DT suction hose from the housing.
- Place the end the DT suction hose in a container with DT solution.

Recommended Cleaning Method

- 1 Spray a small dose of the detergent on the dry surface, and allow it to react (make sure the detergent does not dry up).
- 2 Wash off the loosened dirt using the high-pressure jet.

Interrupting operation

- Release the lever on the handgun.
- During breaks, use the safety catch to secure the handgun lever.
- During longer breaks (more than 5 minutes), also turn the appliance off using the ON/OFF switch.

Finish operation

- If detergent has been added: Suspend detergent suction hose in a container filled with clear water, switch the appliance on for around 1 minute once the spray lance has been removed and rinse until water runs clear.
- Release the lever on the handgun.
- Switch the appliance switch to "0/OFF".
- Turn off tap.
- Press the lever on the handgun to release any remaining pressure in the system.
- Disconnect the appliance from the water supply.
- Detach spray lance from the handgun.
- Briefly switch the appliance on ("I/ON"), press the handgun lever until no further water is discharged (approx. 1 min).
- Switch the appliance switch to "0/OFF".
- Use the safety catch to secure the handgun lever.
- Pull out the mains plug.
- Store the power cord, the HP hose and the accessories on the appliance.

Special accessories

Special accessories expand the possibilities of using your appliance. Please contact your Kärcher dealer for further information.

Detergents

To ensure a trouble-free operation of the appliance and to match the individual cleaning task, we recommend our Kärcher detergent and maintenance agents. Please ask for our advice, or request information on the products.

Maintenance and care

Cleaning

Prior to longer periods of storage, e.g. in the winter:

- ➔ Remove filter from suction hose for detergent and clean with running water.
- ➔ Pull out filter in water connection using flat-nose pliers and clean with running water.

Maintenance

The appliance is maintenance-free.

Frost protection

Frost can destroy the not completely drained appliance. Store the appliance in a frost resistant room during winter.

Spare Parts

Only use original Kärcher spare parts. You will find a list of spare parts at the end of this document.

Specifications

Power connection

Voltage (1~50 Hz)	240 V
Connected load	1,5 kW
Mains fuse (slow-blow)	10 A
Protective class	I

Water connection

Max. feed temperature	40 °C
Min. feed volume	8 l/min
Max. feed pressure	1,2 MPa

Performance data

Working pressure	8,5 MPa
Max. permissible pressure	11 MPa
Water flow rate	5,7 l/min
Detergent flow rate	0,3 l/min
Recoil force of handgun	10 N
Hand-arm vibration (ISO 5349)	2,02 m/s ²
Sound pressure level L _{pa} (EN60704-1)	70 dB(A)
Sound power level L _{wa} (2000/14/EG)	84 dB(A)

Dimensions

Length	240 mm
Width	300 mm
Height	555 mm
Weight	10,5 kg

Troubleshooting

You can rectify minor faults yourself with the help of the following overview.

If in doubt, please consult the authorized customer service.

Risk of injury

Always switch off the appliance and pull out the mains plug before care and maintenance work.

Warning

Repair works may only be performed by the authorized customer service.

Machine does not start

- Check whether the voltage indicated on the type plate corresponds to the voltage of the socket.
- Check the power cable for damage.

Pressure does not build up in the appliance

- Check the setting at the spray lance.
- Evacuate air from the appliance: Switch on the appliance when the HP hose is not connected and allow it to run until the water which discharges from the HP outlet is free of bubbles. Then connect the HP hose again.
- Clean the filter in the water supply connection: This can be easily removed using flat-nose pliers.
- Check all supply lines to the HP pump for leaks or blockages.

Strong pressure fluctuations

- Clean the high-pressure nozzle: Remove dirt and debris from the nozzle bore with a needle and rinse through with water towards the front.
- Check the volume of incoming water.

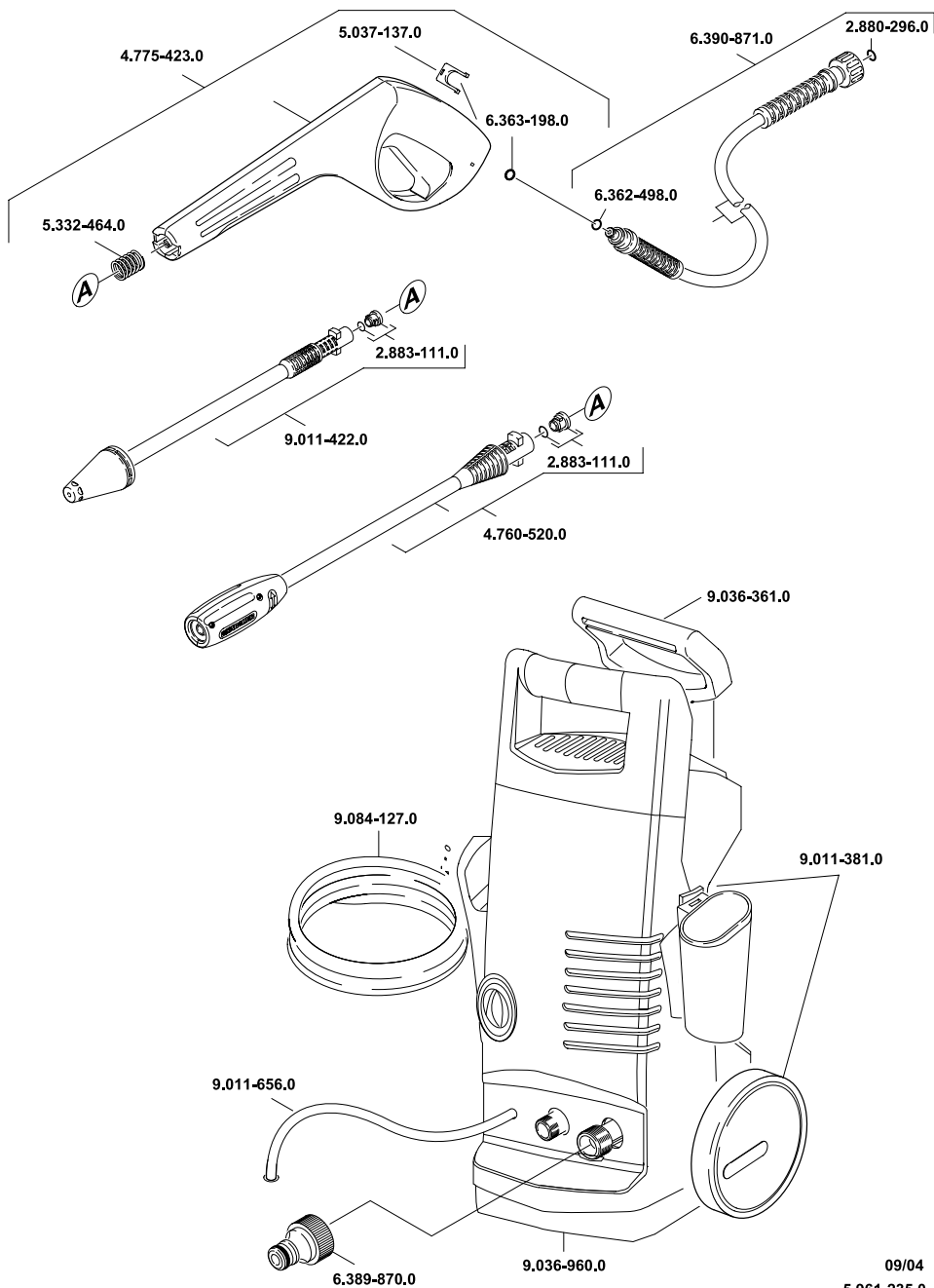
HP pump leaking

- Slight leakage from the HP pump is normal. If the leakage increases contact the authorized customer service.

No detergent infeed

- Select the low-pressure setting for the spray lance.

- Clean the filter of the detergent suction hose.
- Check the DT suction hose for kinks.



09/04
5.961-235.0

AUS

Kärcher Pty Ltd
40 Koornang Road
Scoresby Vic 3179
Victoria, Australia
(03) 9765 - 2300

NZ

Kärcher Limited
12 Ron Driver Place
East Tamaki, Auckland
09 / 274 46 03
