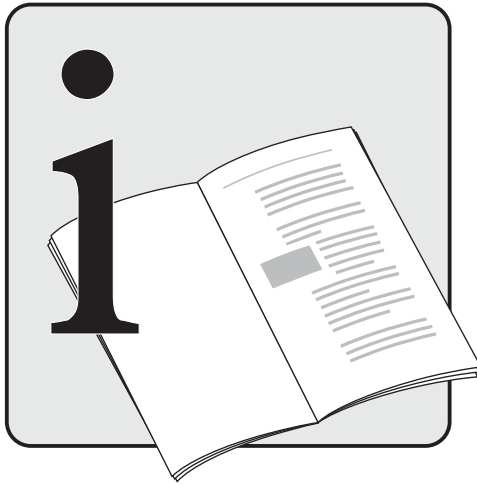




KÄRCHER



KÄRCHER

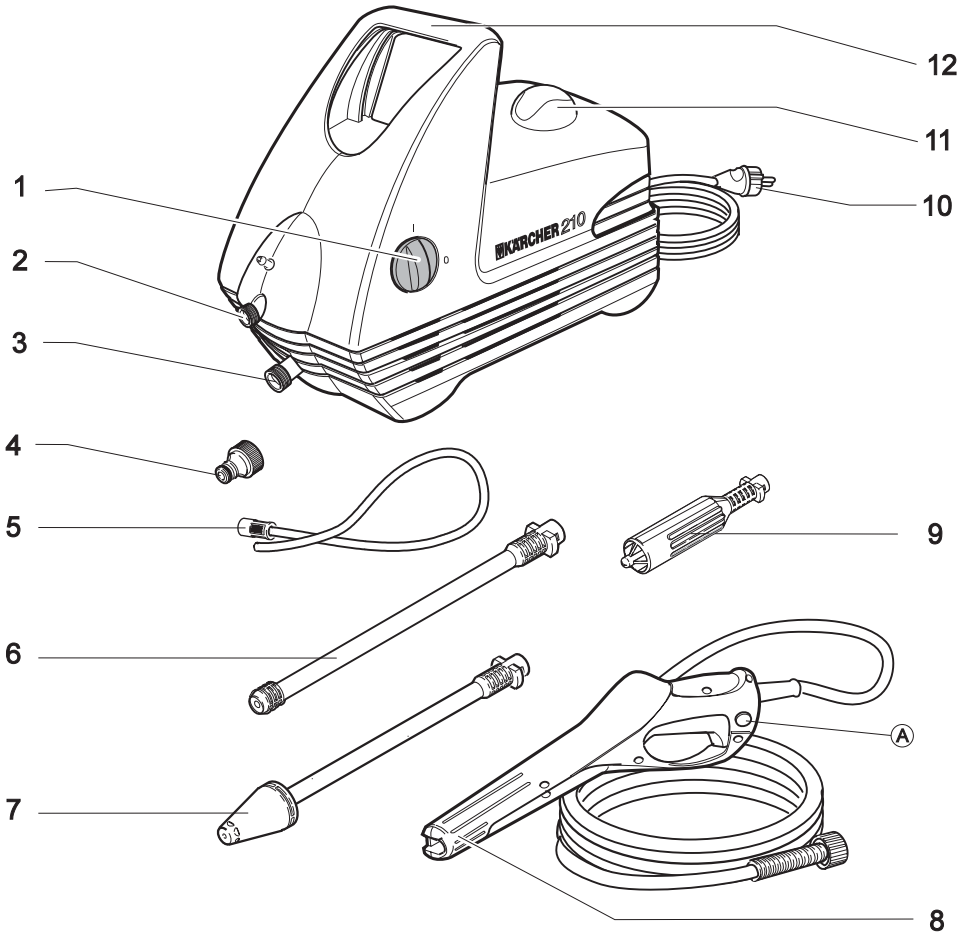
210 plus

Kärcher 210 plus

Purpose

- Use the appliance to clean machines, vehicles, buildings, tools etc.
- Clean facades, terrasses, garden equipment etc. without detergent only with the high-pressure spray.
- Cleaning with the use of a high-pressure cleaner brings an 85% reduction in the consumption of fresh water.
- Cleaning tasks which produce waste water mixed with oil – e.g. when washing engines or the undersides of vehicles – should only be carried out at a specific washing point that is equipped with an oil separator.

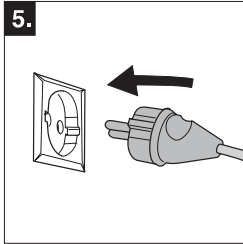
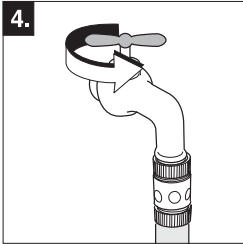
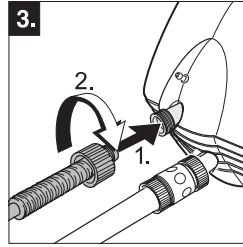
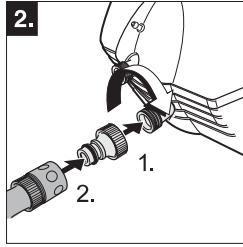
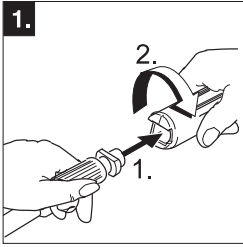
Kärcher 210 plus



- 1 Appliance switch (ON/OFF)
- 2 High-pressure outlet
- 3 Water connection with filter
- 4 Coupling
- 5 Detergent suction hose
- 6 Spray lance with high pressure nozzle

- 7 Spray lance with dirt blaster
- 8 Spray gun with safety ratchet (A) and high-pressure hose
- 9 Detergent nozzle
- 10 Connection lead
- 11 Holder for spray lance
- 12 Carrying handle

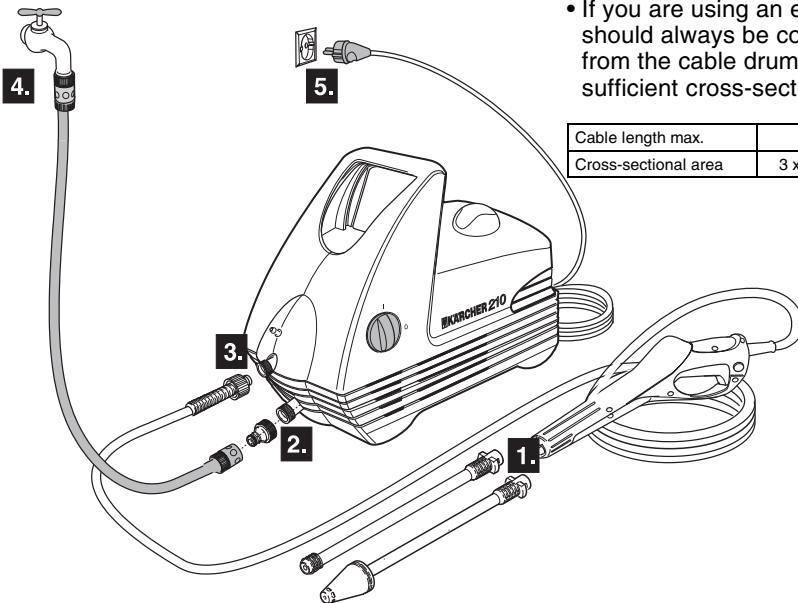
Starting



- Do not simply discard the packing materials with the house-hold waste. Take the packing materials to the appropriate collection areas for recycling.

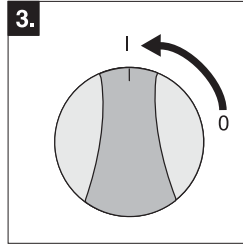
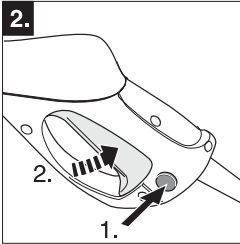
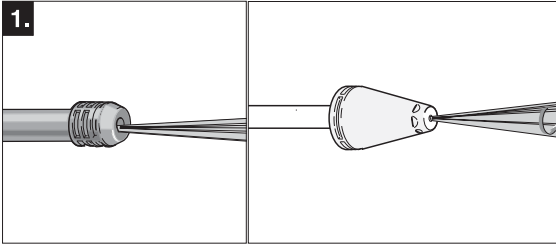
- Dirt in the feed water could lead to the appliance being damaged. To avoid this risk, we recommend fitting a filter with 3/4" connection .

- If you are using an extension cable, it should always be completely unwound from the cable drum and have a sufficient cross-sectional area.



Cable length max.	10 m	30 m
Cross-sectional area	3 x 1,5 mm ²	3 x 2,5 mm ²

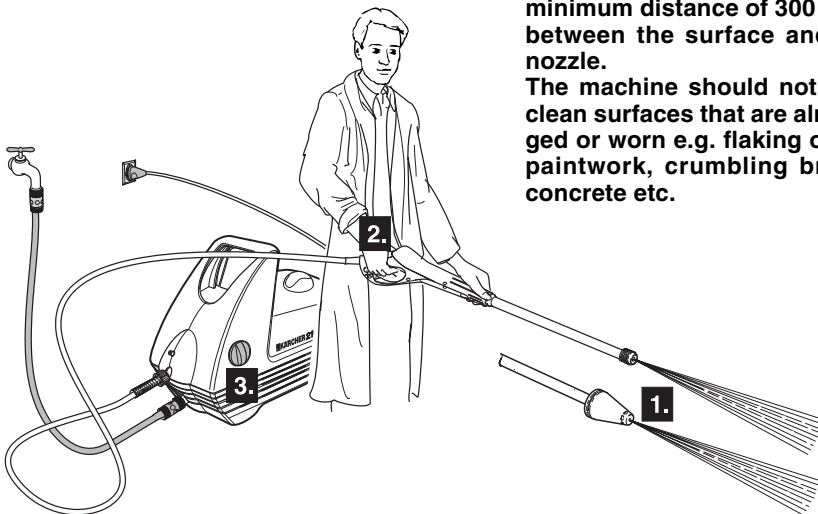
Operation with high pressure



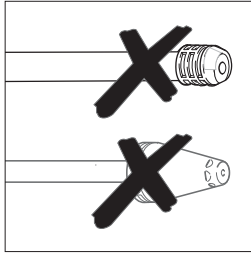
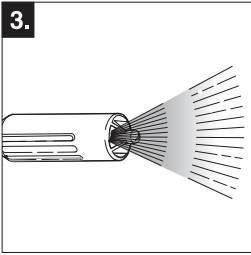
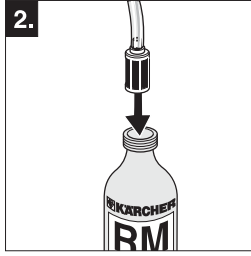
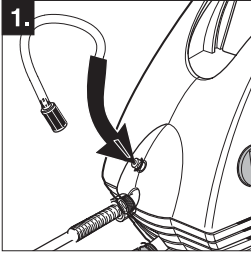
- The appliance is equipped with a pressure-operated switch. The motor starts only if the lever of the gun is pulled.
- The safety ratchet does not lock the trigger of the gun during operation but only prevents it from opening unintentionally.

- **To avoid any risk of damage to the surface being cleaned, when the machine is in use, it is recommended that a minimum distance of 300 mm be kept between the surface and the spray nozzle.**

The machine should not be used to clean surfaces that are already damaged or worn e.g. flaking or scratched paintwork, crumbling brickwork or concrete etc.



Operation with Detergent



• We recommend that you use detergent sparingly for the sake of the environment. Observe the recommended dosage on the detergent label.

• By offering you an individualised range of cleaning and preserving agents, Kärcher guarantees trouble-free operation of the unit. Request more information or ask for our catalogue and/or individual information brochures on specific detergents.

- Profi RM 555 ASF, Universal cleaner

This cleaning agent may be used undiluted.

- Profi RM 555 ULTRA, Universal cleaner

- Profi RM 555 ULTRA, Automotive cleaner

- Profi RM 565 ULTRA, House and garden cleaner

- Profi RM 575 ULTRA, Boat cleaner

Before using, these cleaning agents must be diluted with 9 parts of water (1:9).

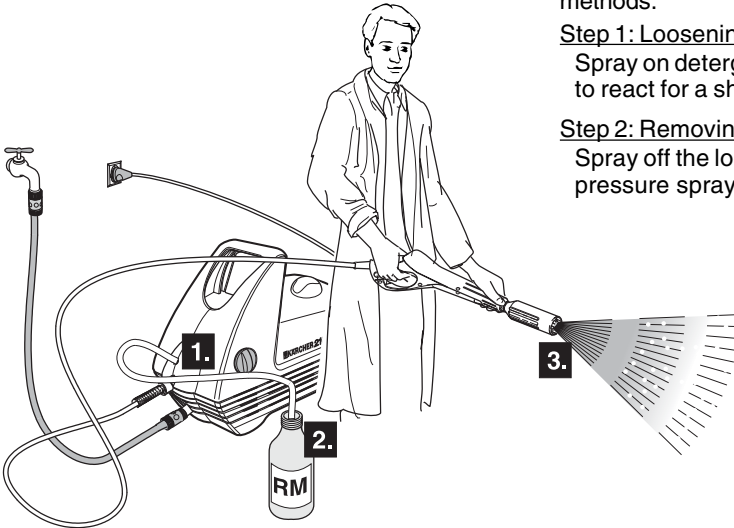
We recommend the following cleaning methods:

Step 1: Loosening dirt

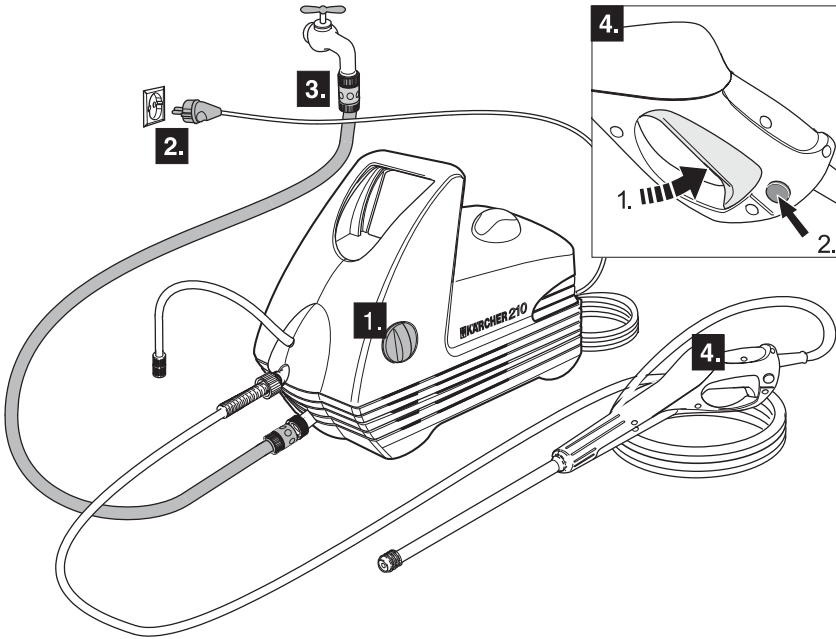
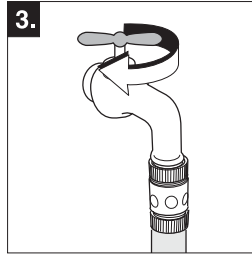
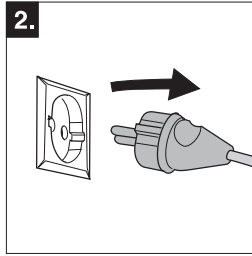
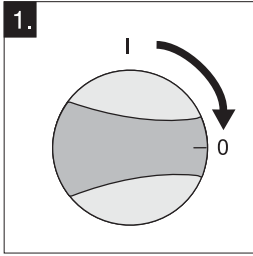
Spray on detergent sparingly and allow to react for a short time.

Step 2: Removing dirt

Spray off the loosened dirt with the high-pressure spray.

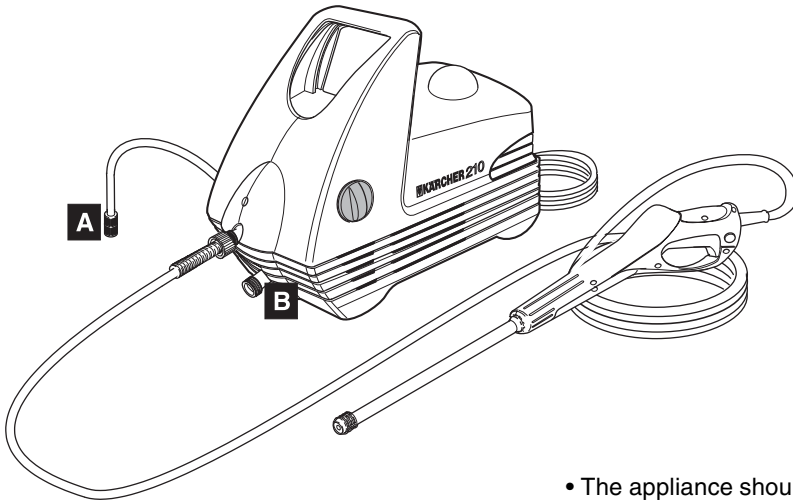
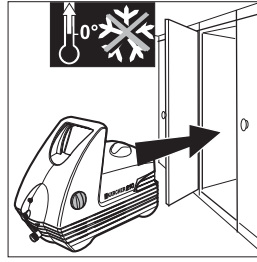
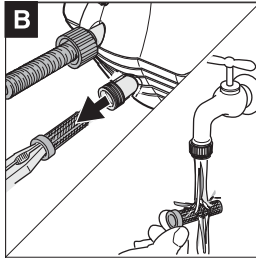
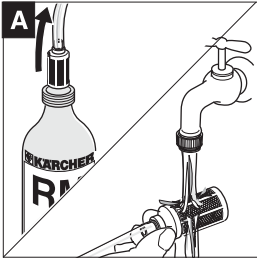


Switching OFF



- Pull the trigger until there is no more pressure in the appliance, and secure the trigger with the safety ratchet against unintentional opening.

Care and maintenance



- The appliance should be rinsed clean after detergent has been used. To do this, suspend the detergent suction hose in a container of clean water, and run the pump for approx. 1 minute.
- Frost will destroy an appliance which has not been completely emptied of water. Ideally, the appliance should be stored in a frost-free room.

General Information

Safety Equipment

When the spray gun is closed, the overflow valve switches off the appliance via a pressure-operated switch. The overflow valve is also a safety device against exceeding the maximum allowable working pressure.

Spare Parts

A selection of the most common spare parts numbers is listed at the end of these operating instructions.

Guarantee

The terms and conditions of guarantee issued by a national Kärcher Company are valid in the relevant country.

If the appliance malfunctions in any way, the fault will be rectified free of charge within the period of the guarantee provided the malfunction is due to faulty material or a manufacturing error and all the terms and conditions are met.

Troubleshooting

! Note: Disconnect the appliance from the power mains before all repair work.

Appliance does not Work

- Check whether the voltage shown on the rating plate corresponds to that of the power source.
- Check the connector cable for damage.

Appliance does not reach

Operational Pressure

- Vent the appliance: Allow the pump to operate without the high-pressure hose until water appears at the high-pressure outlet without any more bubbles. Then reattach the high-pressure hose.
- Clean the strainer in the water connection.
- Check the inlet water flow rate.
- Check all inlet pipes to the pump for leaks or block-age.

Strong Pressure Fluctuations

- Clean the high-pressure nozzle. Remove dirt from the nozzle hole with a needle and then rinse out with water from the front.

Pump Leaks

- 10 drops per minute are permissible. In the case of more serious leakage, you should contact the authorized customer service.

No Detergent Suction

- Set the double nozzle to low pressure.
- Clean the detergent suction hose with filter, and check for leaks.

Technical Data

Power connection

Voltage (1~50/60 Hz)	230-240 V
Connected load	1,6 kW
Mains fuse (slow)	13 A
Protection class	2

Water connection

Supply temperature (max.)	40 °C
Supply rate (min.)	600 l/h
Supply pressure	2–12 bar
..... (30-170 psi)	
Supply hose – length (min.)	7,5 m
– diameter (min.)	1/2 in

Performance data

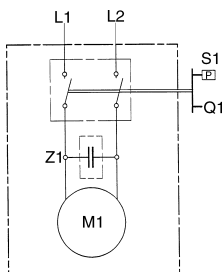
Rated pressure (max.)	100 bar
..... (1450 psi)	
Flow rate	360 l/h
Detergent intake	25 l/h
Recoil force of spray gun at operating pressure (max.)	13 N
Sound pressure level (DIN 45635) .	78 dB(A)

Dimensions

Length	418 mm
Width	185 mm
Height	284 mm
Weight without accessories	5 kg

Circuit Diagram

- M1 Motor
- Q1 Appliance switch
- S1 Pressure-operated switch
- Z 1 Suppressor



EU Declaration of Conformity

We hereby declare that the equipment described below conforms to the relevant fundamental safety and health requirements of the appropriate EU Directives, both in its basic design and construction as well as in the version marketed by us. This declaration will cease to be valid if any modifications are made to the machine without our express approval.

Product: **High-pressure cleaner**
Model: **1.072-xxx**
Serial number: _____
(see rating plate; to be entered by customer)

Relevant EU Directives:

EU Machinery Directive (89/392/EEC) amended by 91/368/EEC, 93/44/EEC, 93/68/EEC.

EU Low-Voltage Equipment Directive (73/23/EEC) amended by 93/68/EEC.

EU Directive on Electromagnetic Compatibility (89/336/EEC) amended by 91/263/EEC, 92/31/EEC, 93/68/EEC.

Harmonised standards applied:

DIN EN 292-1	DIN EN 292-2
DIN EN 55014-1:1993	DIN EN 55014-2:1997
DIN EN 60335-1	DIN EN 60335-2-79
DIN EN 61000-3-2:1995	DIN EN 61000-3-3:1995

Appropriate internal measures have been taken to ensure that series-production units conform at all times to the requirements of current EU Directives and relevant standards. The signatories are empowered to represent and act on behalf of the company management.

Alfred Kärcher Kommanditgesellschaft. Sitz Winnenden.
Registergericht: Waiblingen, HRA 169.
Persönlich haftende Gesellschafterin: Kärcher Reinigungstechnik GmbH.
Sitz Winnenden, 2404 Registergericht Waiblingen, HRB

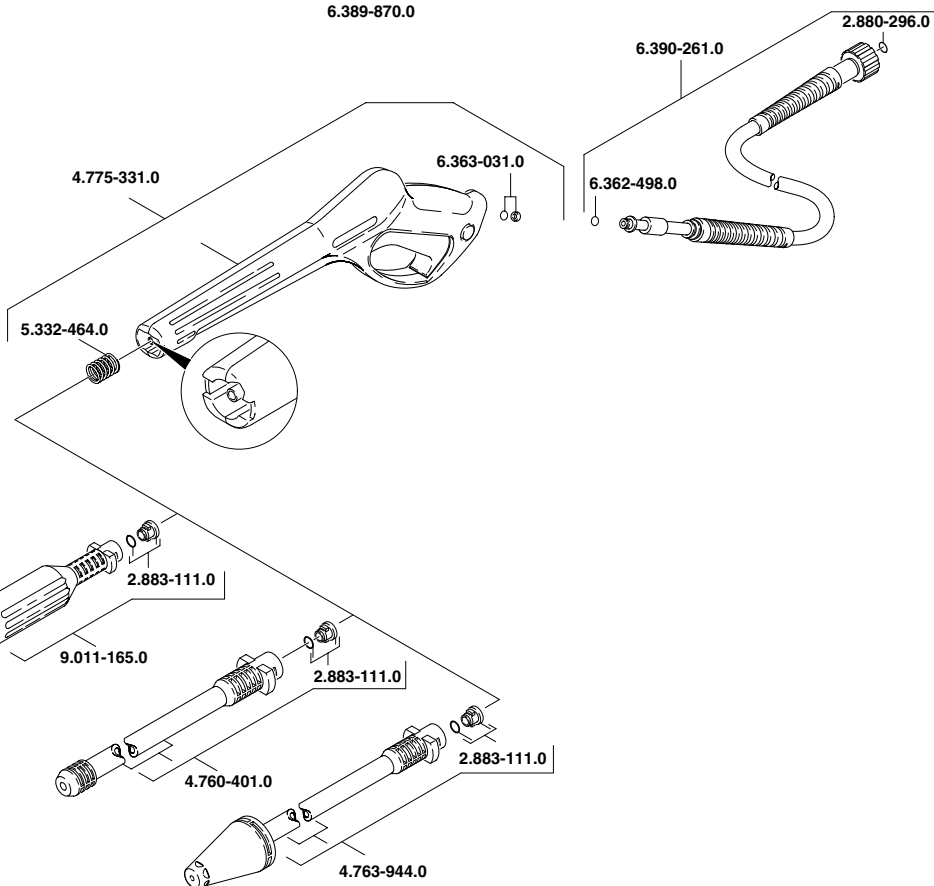
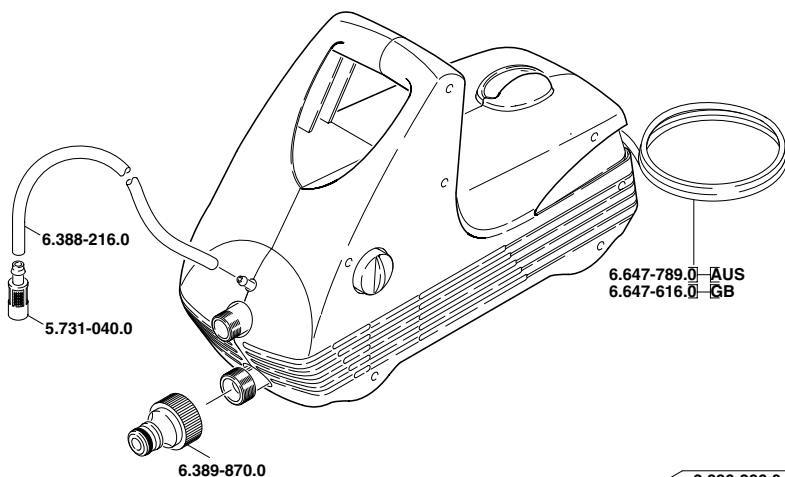
Geschäftsführer: Johannes Kärcher, Roland Kamm, Roland Deibler, Dr. Bernhard Graf

Alfred Kärcher GmbH & Co.
Cleaning Systems
Alfred-Kärcher-Str. 28-40
P.O. Box 160
D-71349 Winnenden
Tel.: ++ 49 71 95 14-0
Fax: ++ 49 71 95 22 12


W. Leistner

KÄRCHER 210-PLUS-N

EUR
F
CH
RA



12.06.2001

