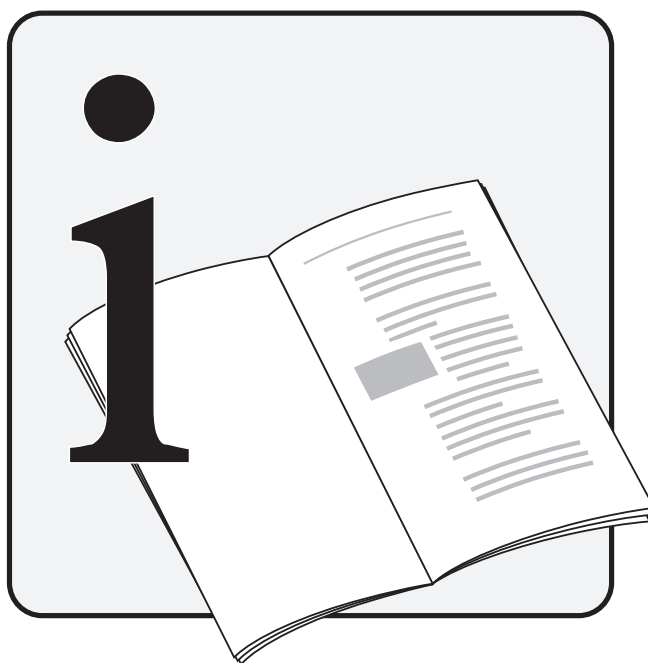




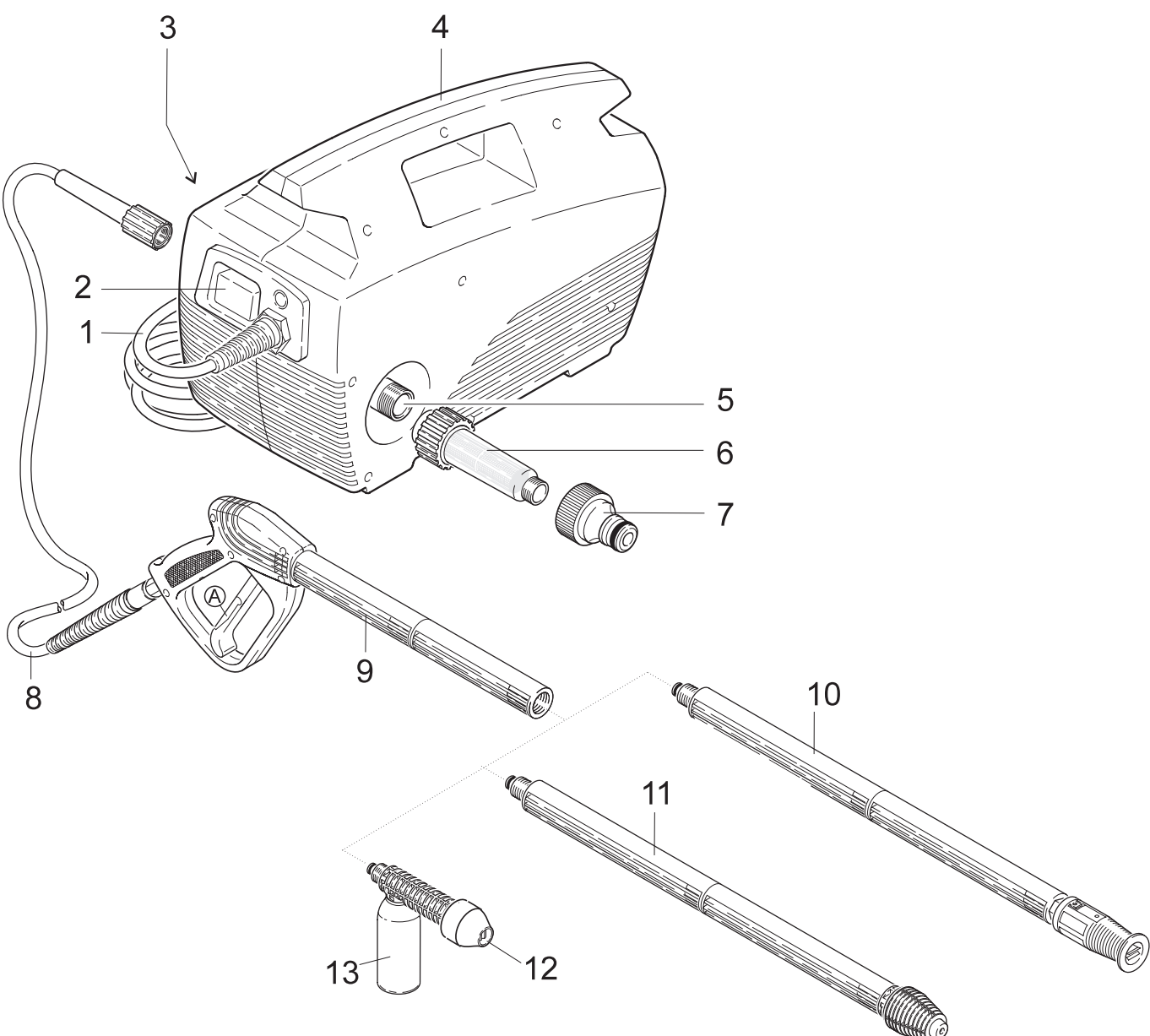
**KÄRCHER**



**KÄRCHER**

302 plus

## 1. Starting



# 1. Starting

- 1 Connection lead
- 2 Appliance switch (ON/OFF)
- 3 High-pressure outlet
- 4 Carrying handle
- 5 Water connection
- 6 Water filter
- 7 Coupling
- 8 High-pressure hose
- 9 Spray gun with safety ratchet (A)
- 10 Spray lance with vario nozzle
- 11 Spray lance with dirt blaster
- 12 Detergent nozzle
- 13 Detergent container

## Unpacking the appliance

- Please contact your dealer immediately if, on unpacking the appliance, you discover damage has been caused during transportation.
- Do not simply discard the packing materials with the house-hold waste. Take the packing materials to the appropriate collection areas for recycling.

## Fitting the accessories

- Screw the high-pressure hose onto the spray gun.
- Connect the high-pressure hose to the high-pressure outlet.

## Electrical Connection

- See technical data of connected values.
- Check whether the voltage shown on the rating plate corresponds to that of the power source.

**Note:** If you are using an extension cable, it should always be completely unwound from the cable drum and have a sufficient cross-sectional area: 10 m = 1.5 mm<sup>2</sup>, 30m = 2.5 mm<sup>2</sup>

## Water Connection

- See technical data for connected values.

**Note:** Impurities in the intake water damage the pump. To prevent this we expressly urge you to use the Kärcher water filter (6).

- Screw the water filter onto the inlet water connection of the machine.
- Screw the coupling (supplied with the machine) onto the water filter.
- Connect a water supply hose to the machine using a suitable hose connector to match the coupling on the machine (hose and connector not supplied).
- Connect the high-pressure hose to the high-pressure outlet.

## Suction

Observe the following if you are drawing water from an open container:

1. Attach a suction hose with filter (order no. 4.440-570) directly to the water connection of the machine.
2. Allow the pump to operate without the high-pressure hose until water appears at the high-pressure outlet without any more bubbles.
3. Then re-attach the high-pressure hose.

## 2. Operation

### Operation with high-pressure

- Screw the spray lance with dirt blaster or the spray lance with vario nozzle onto the spray gun.
- Release the gun trigger with the safety ratchet and pull the trigger.
- Switch on the appliance.

**Note:** This unit is equipped with a pressure switch. The motor only starts up when the lever on the handgun is pressed.

- Vario nozzle  
You can choose between different types of spray by rotating the front protective device on the vario nozzle.
- Dirt Blaster  
The jet rotates at high speed and achieves a very high impact pressure so that it has a very good cleaning effect.

### Operation with Detergent

- Connect the detergent nozzle with the spray gun.
- Fill the detergent container with suitable detergent and screw the container back on the detergent nozzle.
- We recommend that you use detergent sparingly for the sake of the environment. Observe the recommended dosage on the detergent label.
- By offering you an individualised range of cleaning and preserving agents, Kärcher guarantees trouble-free operation of the unit. Request more information or ask for our catalogue and/or individual information brochures on specific detergents.

Universal cleaner                      Profi RM 555 ASF  
This cleaning agent may be used undiluted.

Universal cleaner                      Profi RM 555 ULTRA  
Automotive cleaner                  Profi RM 555 ULTRA  
House and garden cleaner          Profi RM 565 ULTRA  
Boat cleaner                            Profi RM 575 ULTRA  
Before using, these cleaning agents must be diluted with 9 parts of water (1:9).

**Note:** Only cleaning agents approved by the equipment manufacturer may be used. Unsuitable detergents may damage the unit and the object being cleaned.

We recommend the following cleaning methods:

#### Step 1: Loosening dirt

Spray on detergent sparingly and allow to react for a short time.

#### Step 2: Removing dirt

Spray off the loosened dirt with the high-pressure spray.

### Interrupting Operation

- If you release the trigger of the spray gun, the appliance switches off. If the trigger is pulled again, the appliance switches on again.
- In the event of extended work breaks (more than 5 minutes), switch off the pump.

### Switching Off

- Switch off the appliance and unplug the power cable from the mains.
- Close the water inlet and detach the appliance from the water connection.
- Pull the trigger until there is no more pressure in the appliance, and secure the trigger with the safety ratchet against unintentional opening.

### Purpose

- Use the appliance to clean machines, vehicles, buildings, tools etc.
- Clean facades, terrasses, garden equipment etc. without detergent only with the high-pressure spray.
- Engines may only be cleaned at locations with appropriate oil separators (environmental protection).
- When the appliance is used at petrol stations and other dangerous areas, the appropriate safety regulations must be observed.
- We recommend the dirt blaster as a special attachment for stubborn dirt.

## 3. Care and Maintenance

### Monthly or as Required

- Clean the nozzle.  
Remove dirt from the nozzle hole with a needle, and rinse with water from the front.
- Clean the strainer in the water connection. It can be easily removed with a flat-nosed pliers.

### Frost Protection

- Frost will destroy an appliance which has not been completely emptied of water. Ideally, the appliance should be stored in a frost-free room.

## 4. Troubleshooting

**Note:** *Disconnect the appliance from the power mains before all repair work. Only authorized customer service personnel may inspect electrical components.*

In this chapter, we would like to give you some hints on dealing with malfunctions yourself.

In all other cases or in the case of electrical faults, please contact the authorized customer service.

### Appliance does not Work

- Check the mains voltage.
- Check the connector cable for damage.

### Appliance does not reach Operational Pressure

- Ventilate the appliance. (→ Suction 2.)
- Clean the strainer in the water connection.
- Check the inlet water flow rate.
- Check all inlet pipes to the pump for leaks or blockage.

### Strong Pressure Fluctuations

- Clean the nozzle. Remove dirt from the nozzle hole with a needle, and rinse with water from the front.

### Pump Leaks

- 3 drops per minute are permissible. In the case of more serious leakage, you should contact the authorized customer service.

## 5. General Information

### Safety Equipment

When the hand-held spray gun is closed, the overflow valve switches off the appliance via a pressure-operated switch. The overflow valve is also a safety device against exceeding the maximum allowable working pressure.

### Spare Parts

A selection of the most common spare parts numbers is listed at the end of these operating instructions.

### Guarantee

The terms of guarantee issued by our competent distribution company are valid in every country. If the appliance malfunctions in any way, we shall rectify the fault free of charge within the period of guarantee, provided the cause can be attributed to faulty material or a manufacturing error.

In the event of a claim on the guarantee, please consult your dealer with accessories and receipt of purchase or contact your nearest authorized customer service centre.

## 6. Technical Data

### Power connection

Voltage .....	220 V
Type of current .....	1~50 Hz
Connected load .....	1,7 kW
Mains fuse (slow) .....	10 A
Protection class .....	1

### Water connection

Supply temperature (max.) .....	40 °C
Supply rate (min.) .....	600 l/h
Supply pressure (max.) .....	12 bar
Supply hose	
– length (min.) .....	7.5 m
– diameter (min.) .....	1/2 in
Suction height from open tank at a water temperature of 20°C .....	1 m

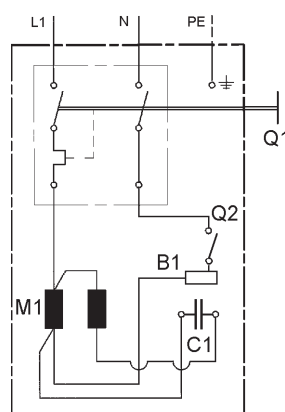
### Performance data

Rated pressure .....	100 bar
Flow rate .....	420 l/h
Detergent intake .....	20 l/h
Recoil force of hand-held spray gun at operating pressure (max.) .....	15 N
Sound pressure level (DIN 45635) .....	74.5 dB (A)

### Dimensions

Length .....	415 mm
Width .....	194 mm
Height .....	275 mm
Weight .....	12 kg

### Circuit Diagram

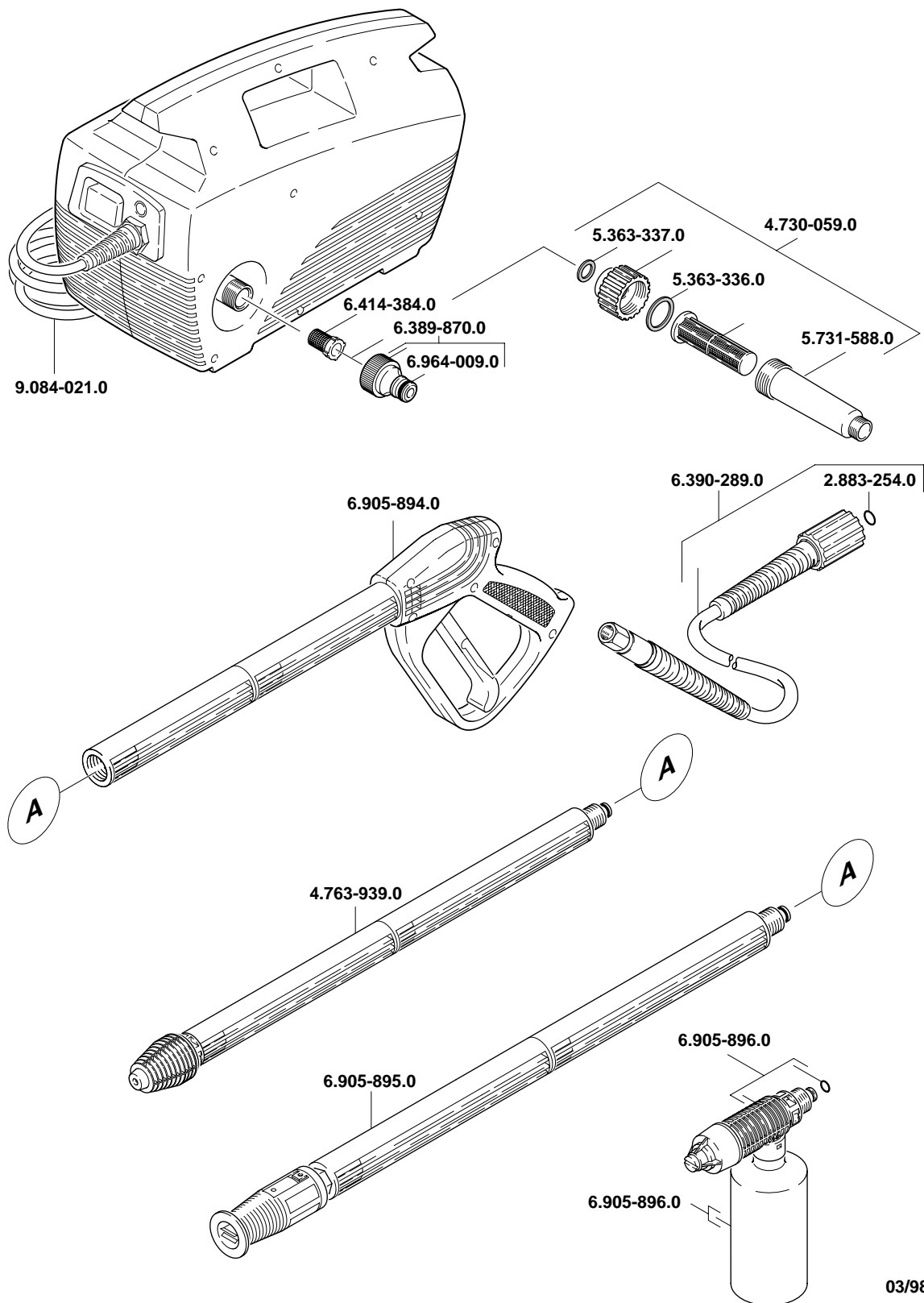


- C1* Running capacitor  
*M1* Motor  
*Q1* Motor Protective Circuit Breaker  
*Q2* Pressure-operated switch

## 7. Spare parts

**KÄRCHER** 302 - PLUS

1.994-844 CHINA



03/98