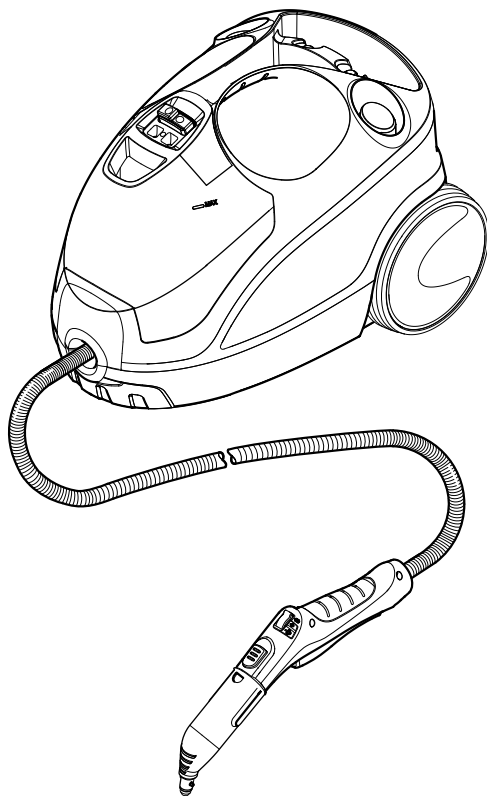


Operating Instructions

Before first use of the unit
read these operating instructions
and act in accordance with them.



Contents

General information	3
Safety instructions	4
Description of the Appliance	6
Quick Reference	7
Operation	8
How to Use the Accessories	10
Maintenance and care	12
Troubleshooting	13
Helpline	13
Technical specifications	14
Special accessories	14
Spare Parts	15

General information

Dear Customer,



Please read and comply with these original instructions prior to the initial operation of your appliance and store them for later use or subsequent owners.

Proper use

Use the steam cleaner only for private households.

The appliance is intended to be used with steam and can be used with the appropriate accessories as described in these operating instructions. You will not need any detergent. Please adhere to the safety instructions.

Symbols in the operating instructions

Danger

Immediate danger that can cause severe injury or even death.

Warning

Possible hazardous situation that could lead to severe injury or even death.

Caution

Possible hazardous situation that could lead to mild injury to persons or damage to property.

Symbols on the machine



Steam

CAUTION - Danger of scalding



CAUTION – Please read the operating instructions!

Environmental protection



The packaging material can be recycled. Please do not place the packaging into the ordinary refuse for disposal, but arrange for the proper recycling.



Old appliances contain valuable materials that can be recycled. Please arrange for the proper recycling of old appliances. Please dispose your old appliances using appropriate collection systems.

Notes about the ingredients (REACH)

You will find current information about the ingredients at:

www.kaercher.com/REACH

Scope of delivery

The scope of delivery of your appliance is illustrated on the packaging. Check the contents of the appliance for completeness when unpacking.

In the event of missing accessories or any transport damage, please contact your dealer.

Spare parts

Use only original KÄRCHER spare parts. You will find a list of spare parts at the end of these operating instructions.

Warranty

The warranty terms published by the relevant sales company are applicable in each country. We will repair potential failures of your appliance within the warranty period free of charge, provided that such failure is caused by faulty material or defects in manufacturing. In the event of a warranty claim please contact your dealer or the nearest authorized Customer Service centre. Please submit the proof of purchase. (See address on the reverse)

Safety instructions

Danger

- *The appliance may not be used in areas where a risk of explosion is present.*
- *If the appliance is used in hazardous areas the corresponding safety provisions must be observed.*
- *Never use the appliance in pools containing water.*
- *The device should not be used to clean electrical appliances such as oven, exhaust, micro-wave, televisions, lamps, hair-dryer, electrical heating systems, etc.*
- *Check the faultless condition of the appliance and the accessories before using it. Otherwise, the appliance must not be used. Please check in particular the power cord, the maintenance lock, and the steam hose.*
- *If the power cord is damaged, please arrange immediately for the exchange by an authorized customer service or a skilled electrician.*
- *Please arrange for the immediate exchange of a damaged steam hose. You may only use a steam hose that is recommended by the manufacturer (see spare parts list for the order number).*
- *Never touch the mains plug and the socket with wet hands.*
- *Never use the appliance to clean objects containing hazardous substances (e.g. asbestos).*
- *Never touch the steam jet from a short distance with your hands and never direct the steam jet to persons or animals (risk of scalds).*
- *The maintenance lock must not be opened during operation.*

Warning

- *The appliance may only be connected to an electrical supply which has been installed in accordance with IEC 60364.*
- *The appliance may only be connected to alternating current. The voltage must correspond with the type plate on the appliance.*
- *In wet rooms, e.g. bathrooms, connect the appliance to sockets with a series connected RCD adapter.*
- *Unsuitable extension cables can be hazardous. Only use a splashproof extension cable with a minimum section of 3x1 mm².*
- *The connection between power cord and extension cable must not lie in water.*
- *If couplings of the power cord or extension cable are replaced the splash protection and the mechanical tightness must be ensured.*
- *The operator must use the appliance correctly. When working with the appliance, he must consider the local conditions and pay due care and attention to other persons, in particular children, who are nearby.*
- *This appliance can be used by children aged from 8 years and above and persons with reduced physical, sensory or mental capabilities or lack of experience and knowledge if they have been given supervision or instruction concerning use of the appliance in a safe way and understand the hazards involved. Children shall not play with the appliance. Cleaning and user maintenance shall not be made by children without supervision.*
- *Never leave the appliance unattended when it is in operation.*
- *Be very careful while cleaning tiled walls with sockets.*

Caution

- *Make sure that the power cable or extension cables are not damaged by running over, pinching, dragging or similar. Protect the power cable from heat, oil, and sharp edges.*
- *Never fill solvents, solvent-containing liquids or undiluted acids (e.g. detergents, benzene, paint thinner, and acetone) into the water reservoir as these substances affect the materials used on the appliance.*
- *The appliance must not be carried during cleaning.*
- *The appliance must provide of a stable ground.*
- *Use and store the unit only in accordance with the specifications in the description and/or figure.*
- *The steam switch must not be locked during the operation.*
- *Protect the appliance from rain. Do not store outside.*

Safety Devices

Caution

Safety devices protect the user and must not be modified or bypassed.

Pressure controller

The pressure controller keeps the boiler pressure during the operation as constant as possible. The heating is turned off if the maximum operating pressure of 4 bar is reached in the boiler and is reactivated in case of a pressure drop in the boiler due to steam tapping.

Boiler thermostat

If there is no water in the boiler the temperature in the boiler rises. The boiler thermostat turns off the heating. The heating is prevented from being turned on again until the boiler has been filled.

Safety thermostat

If the boiler thermostat fails and the appliance overheats, then the safety thermostat turns off the appliance.

Please contact your local KÄRCHER customer service to arrange for the reset of the safety thermostat.

Maintenance lock

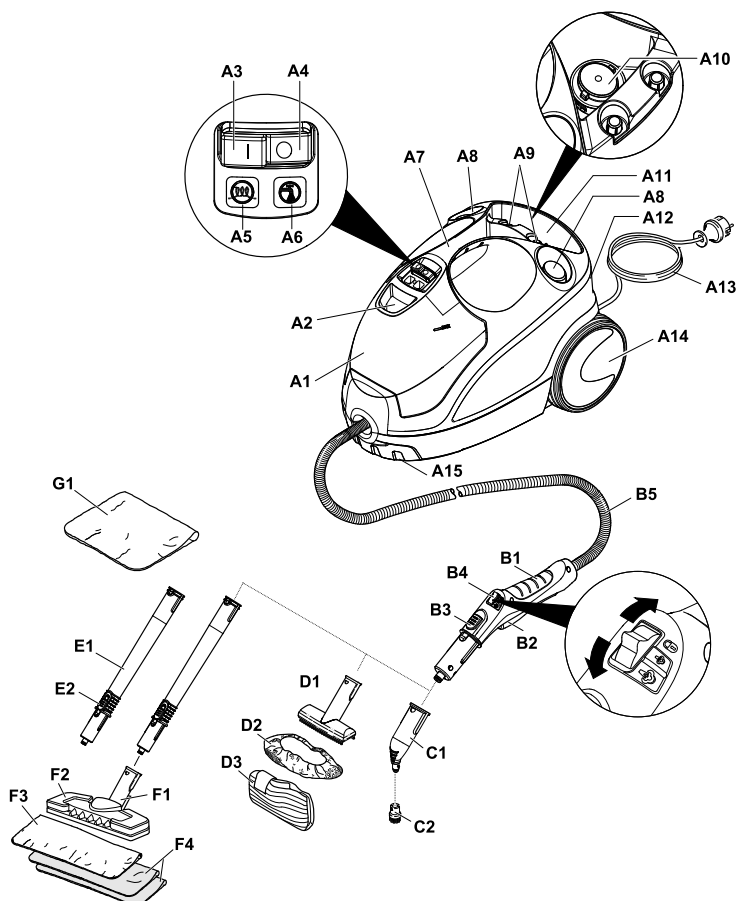
The maintenance lock acts as a pressure control valve at the same time. It seals the boiler against the steam pressure that builds up in the boiler.

If the pressure controller is defect and the steam pressure in the boiler rises, the pressure control valve, and steam is emitted through the maintenance lock to the outside.

Please contact your local Kärcher customer service before you put the appliance into operation again.

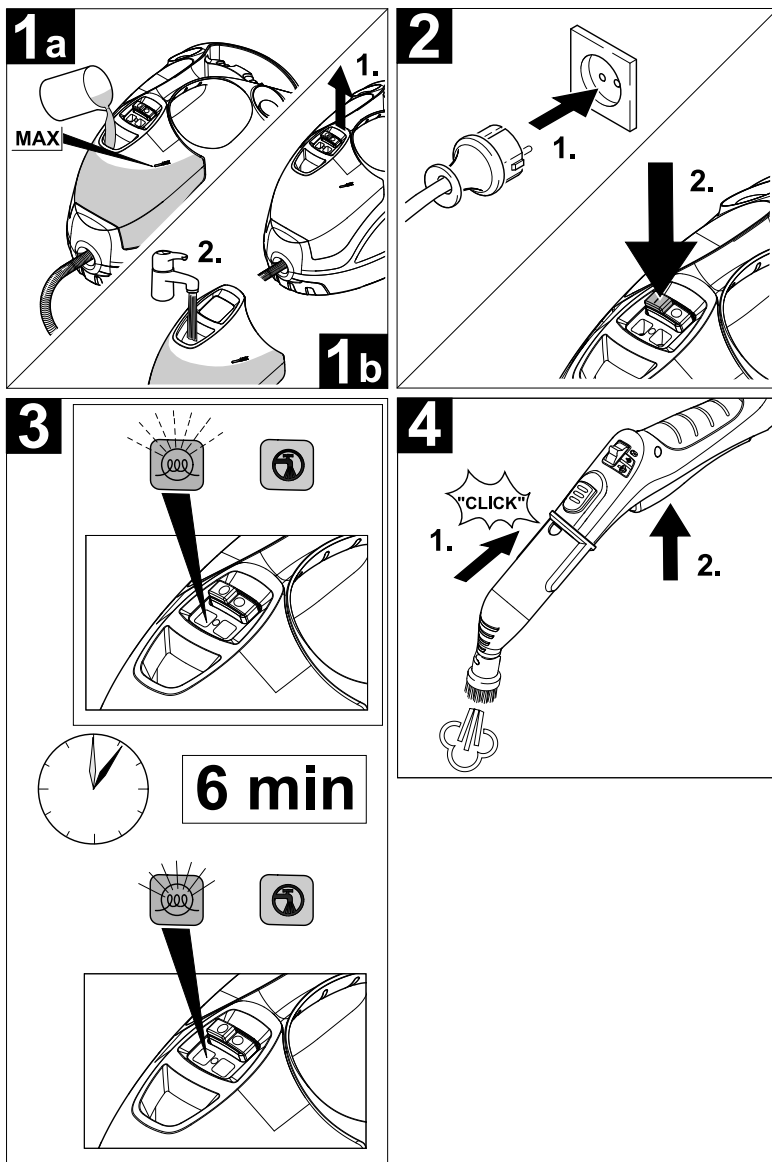
Description of the Appliance

- | | | | |
|-----|---------------------------------------|----|--|
| A1 | Water reservoir | B3 | Unlocking button |
| A2 | Water filler neck | B4 | Selector switch for the steam volume (with child protection) |
| A3 | Switch - ON | B5 | Steam hose |
| A4 | Switch - OFF | C1 | Detail nozzle |
| A5 | Indicator lamp - heating (GREEN) | C2 | Round brush |
| A6 | Indicator lamp "water shortage" (RED) | D1 | Hand nozzle |
| A7 | Carrying handle | D2 | Terry cloth cover |
| A8 | Holder for accessories | D3 | Microfibre abrasive cover |
| A9 | Holder for accessories | E1 | Extension tubes (two tubes) |
| A10 | Maintenance lock | E2 | Unlocking button |
| A11 | Storage for mains connection cable | F1 | Floor nozzle |
| A12 | Parking holder | F2 | Retaining clip |
| A13 | Mains cable with mains plug | F3 | Terry floor cloth |
| A14 | Transport wheel (2x) | F4 | Soft floor cloth (2x) |
| A15 | Steering roller | G1 | Polishing cloth |
| B1 | Steam gun | | |
| B2 | Steam lever | | |

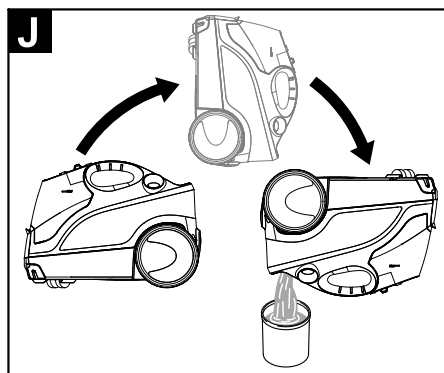
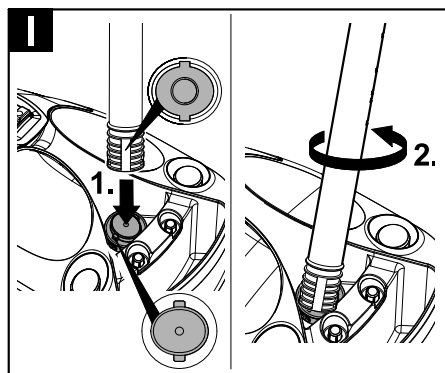
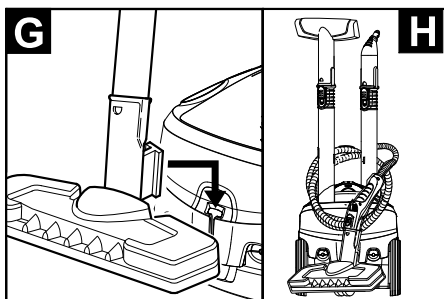
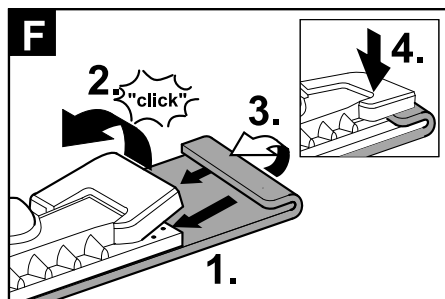
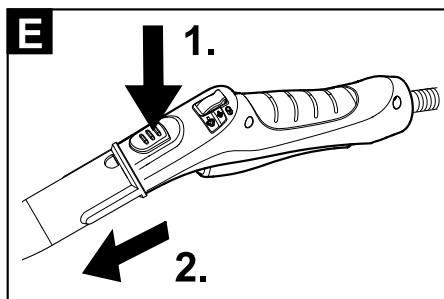
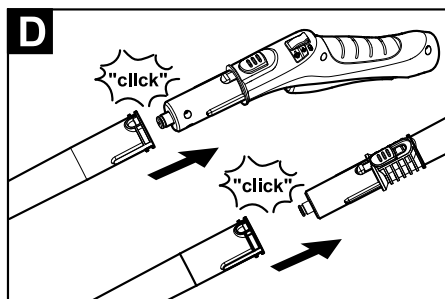
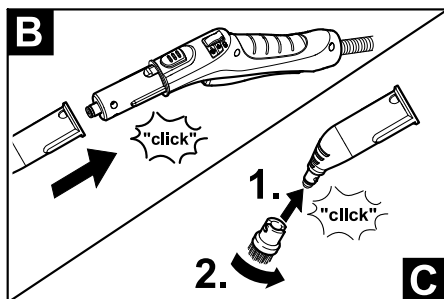
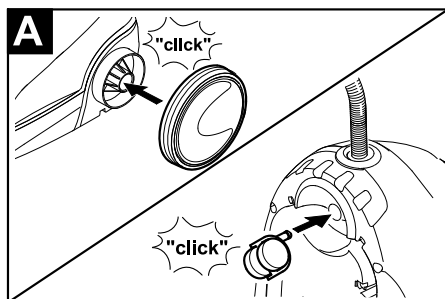


Quick Reference

- 1 Fill the water reservoir up to the "MAX" marking.
- 2 Plug in the main plug.
Turn on the appliance.
- 3 Indicator lamp "Heating on" is blinking (green)
Wait until the indicator lamp (heater) lights up permanently.
- 4 Connect the accessories to the steam gun.
The steam cleaner is ready to use.



Operation



Attaching the Accessories

Illustrations see page 8.

- Illustration **A**
Insert steering roller and transport wheels and lock them.
- Illustration **B** + **C**
Connect the required accessories (see Chapter "Using accessories") to the steam gun. Insert the open end of the accessory on the steam gun and push onto the steam gun until the unlocking button of the steam gun locks into place.
- Illustration **D**
Use the extension pieces if necessary. To do so, connect one or both extension pieces to the steam gun. Insert the required accessories on the free end of the extension piece.

Removing the Accessories

⚠ Danger

Hot water may drip out of the accessory parts while you are detaching them! Never detach accessory parts while steam streams out - risk of scalding!

- Move the selector switch for the steam volume back (steam lever locked).
- Illustration **E**
To detach the accessory parts, press the unlocking button and pull the items apart.

Filling the Water Reservoir

The water reservoir may be refilled at any time.

Caution

Do not use condensation water from the drier!

Do not fill in detergents or other additives!

- Illustration **F**

You can remove the water reservoir to fill it or you can fill it directly on the appliance.

Take off water reservoir.

- Pull the water reservoir straight up.
- Fill the water reservoir up to the "MAX" marking while positioned vertically under the water tap.
- Insert the water reservoir and press downwards until it arrests.

Directly on the appliance

- Pour water from a container into the funnel inlet. Fill up to the "MAX" marking.

Turning on the Appliance

- Place the unit securely on a firm surface.
- Insert the mains plug into a socket.
- Press the ON switch to turn on the appliance.

Note: *If there is no or not enough water in the steam boiler, the water pump starts and supplies water from the reservoir into the steam boiler. The filling process may take several minutes.*

- Wait until the indicator lamp (heater) lights up permanently.

The steam cleaner is ready to use.

Refilling Water

In case of water shortage, the indicator lamp "water shortage" glows red in the water reservoir and a signal can be heard.

- Fill the water reservoir up to the "MAX" marking.

Note: *The water pump tries to fill the steam boiler in short intervals. If the filling process is successful, the red indicator lamp goes off.*

Adjusting the Steam Quantity

Use the selector switch for the steam volume to regulate the discharged steam. The selector switch has three positions:



Maximum steam volume



Reduced steam volume



No steam - child protection

Note: In this lever position, the steam lever cannot be used.

- ➔ Set selector switch to the required steam volume.
- ➔ While operating the steam switch, always direct the steam gun at a separate piece of cloth until the steam is emitted evenly.

Note: The heating of the steam cleaner is turned on in regular intervals during the operation of the appliance in order to maintain the pressure in the boiler at a constant level. Then the indicator lamp (heater) blinks green.

Turning Off the Appliance

- ➔ Press the OFF switch to turn off the appliance.
- ➔ Disconnect the mains plug from the socket.
- ➔ Empty the residual water from the water reservoir.

Storing the Appliance

Illustrations  - 

- ➔ Insert the round brush into a small holder for accessories.
- ➔ Insert the manual nozzle and detail nozzle onto each extension pipe.
- ➔ Put the extension pipes into the large accessory compartments.
- ➔ Hook the floor nozzle into the parking position.
- ➔ Wrap the steam hose around the extension pipes and insert the steam pistol into the floor nozzle.
- ➔ Stow away the mains cable in the accessory holder for the mains cable.

How to Use the Accessories

Important application instructions

Cleaning of Textiles

Prior to treatment with the steam cleaner, always check the reaction of the textiles in an inconspicuous location: Steam heavily at first, then let dry and then check for colour or shape changes.

Cleaning of Coated or Lacquered Surfaces

Be careful when you clean kitchen and living room furniture, doors, parquet, lacquered or plastic-coated surfaces. The wax, furniture polish, plastic surfaces or paint can come loose or stains can be created. Therefore, always clean these surfaces with a steamed cloth only.

Caution

Never direct the steam jet at glued edges as the edge band may loosen. Do not use the steam cleaner on unsealed wooden or parquet floors.

Cleaning of Glass

In case of low outside temperatures, especially in the winter, warm up the window pane by slightly steaming the entire glass surface. This will prevent tensions on the surface which might lead to glass breakage.

Caution

Do not direct steam onto the sealed locations of the window frame to prevent damage.

Steam gun

You can use the steam gun without any additional accessories, e.g.:

- to remove odours and wrinkles from hanging clothes by steaming them at a distance of 10 to 20 cm.
- to remove dust from plants. Here, keep a distance of 20-40 cm.
- for moist dusting, by briefly steaming the cloth and wiping the furniture with it.

Detail nozzle

The closer this nozzle is to the contaminated area, the higher the cleaning effect, as the temperature and the steam are highest at the nozzle output. Especially suited for cleaning difficult access locations, joints, fittings, drains, sinks, toilets, blinds and heaters. Heavy limescale can be drenched in vinegar prior to steam-cleaning. Let the vinegar penetrate for about 5 minutes.

Round brush

The round brush can be installed onto the detail nozzle as an accessory. Attached brushes can therefore be used to remove heavy soiling.

Caution

Not suited for the cleaning of sensitive surfaces.

→ Illustration 

Attach the round brush to the detail nozzle.

Hand nozzle

Terry cloth cover

Pull the terry cloth cover over the hand nozzle. Especially well-suited for small washable areas, shower stalls, mirrors or furniture cloth material.

Microfibre abrasive cover

Pull up the microfibre abrasive cover over the hand nozzle.

Especially well-suited for removing calcium and soap residues in the bath-room (for e.g. shower cabins, tiled walls).

Can be washed at 60 °C; please do not use any fabric softener. Not suitable for drier.

Floor nozzle

Note: *Detergent residue or care emulsions that are still present on the surfaces to be cleaned, can lead to smears when steam cleaned. However, these will disappear with repeated cleaning procedures.*

→ Illustration 

Attach the floor cloth to the floor nozzle.

- 1 Fold the floor cloth the long way and place the floor nozzle on top of it.
- 2 Open holding clamps.
- 3 Place the cloth ends into the openings.
- 4 Close the holding clamps.

Caution

Do not insert fingers between the clamps.


Terry floor cloth

Suited for all washable wall and floor coverings, e.g. stone floors, tiles and PVC floors. Work slowly on very dirty surfaces to allow the steam to act on the dirt for a longer period of time.

Soft floor cloth

Soft floor cloth made of microfibre plush velvet. Better removal of dirt due to the microscopically fine microfibre. Don't use fabric softener.

Parking the floor nozzle

→ Illustration 

During work breaks, hook the floor nozzle into the parking holder.

Polishing cloth

Microfibre polishing cloth for polishing mirrors and other smooth surfaces.

Maintenance and care

Danger


Always disconnect the mains plug and allow the steam cleaner to cool down before performing any maintenance work.

Rinsing the steam boiler

Rinse the steam cleaner boiler at the latest after 10 boiler fillings.

- ➔ Disconnect the mains plug from the socket.
- ➔ Allow the steam cleaner to cool down.
- ➔ Empty the water reservoir.
- ➔ Remove the accessories from the accessory compartments.

Illustration

- ➔ Open the maintenance lock. For this, place the open end of an extension pipe onto the maintenance lock, lock it into the guide and unscrew it.
- ➔ Fill the boiler with water and shake it strongly. This dissolves lime scaling residing on the boiler bottom.
- ➔ Completely empty the steam boiler to remove existing water (see Fig. ).

Descaling the Steam Boiler

As limescale builds up on the boiler walls, we recommend to descale the boiler in the following intervals (RF=reservoir fillings):

Degree of hardness	°dH	mmol/l	RF
I soft	0- 7	0-1,3	100
II medium	7-14	1,3-2,5	90
III hard	14-21	2,5-3,8	75
IV very hard	>21	>3,8	50


Note: Please contact your Conservancy Board or the local water supply company to inquire about the hardness of your water.

- ➔ Disconnect the mains plug from the socket.
- ➔ Allow the steam cleaner to cool down.
- ➔ Empty the water reservoir.
- ➔ Remove the accessories from the accessory compartments.

Illustration

- ➔ Open the maintenance lock. For this, place the open end of an extension pipe

onto the maintenance lock, lock it into the guide and unscrew it.

- ➔ Completely empty the steam boiler to remove existing water (see Fig. ).

Warning

Only use products approved by KÄRCHER to exclude any damages of the appliance.

- ➔ Use the KÄRCHER decalcifier sticks (order no. 6.295-047) to decalcify the water. Please follow the dosing instructions on the packaging while using the decalcifying solution.

Caution


Use caution when filling and emptying the steam cleaner. The descaling solution can have an aggressive effect on delicate surfaces.

- ➔ Pour the descaling solution into the boiler and allow it to react for approximately 8 hours.

Warning

Do not screw the maintenance lock onto the appliance during the decalcifying.

Do not use the steam cleaner as long as there is decalcifying agent in the boiler.

- ➔ Completely empty the descaling solution after 8 hours. A small amount of the solution will remain in the boiler. Therefore, you should rinse the boiler two to three times with cold water to remove any residues of the descaler.
- ➔ Completely empty the steam boiler to remove existing water (see Fig. ).
- ➔ Allow the storage compartment for the mains cable to dry.
- ➔ Screw the maintenance lock in using the extension pipe.
- ➔ Fill water reservoir (see page 9).
- ➔ The steam cleaner is ready to use.

Care of the Accessories

Note: The floorcloth and the terry cloth cover have been pre-washed and can be used immediately for working with the steam cleaner.

- ➔ You can wash dirty floorcloths and terry cloth covers in the washing machine at 60°C. Do not use a liquid softener as this would affect the ability of the cloths to pick up dirt. You may tumble dry the cloths.

Troubleshooting

Often, failures have simple causes and you can do the troubleshooting yourself using the following overview. If you are in doubt or if the failure is not listed here please contact the authorized customer service.

⚠ Danger

Always disconnect the mains plug and allow the steam cleaner to cool down before performing any maintenance work.

Repair works may only be performed by the authorized customer service.

Long heating-up time

Steam boiler is decalcified.

➔ Descale the steam boiler.

No steam

Indicator lamp - "water shortage" blinks red and signal sounds.

No water in the water reservoir.

➔ Fill the water reservoir up to the "MAX" marking.

Indicator lamp "water shortage" glows red.

No water in the steam boiler. Overheating protection of the pump was triggered.

➔ Turn off the appliance.

➔ Filling the Water Reservoir

➔ Turn on the appliance.

Water reservoir has not been inserted properly or is calcified.

➔ Remove the water reservoir and rinse it.

➔ Insert the water reservoir and press downwards until it arrests.

Steam lever cannot be pressed anymore

Steam switch is secured with the lock / child-proof lock.

➔ Move the selector switch for the steam volume to the front.

High water output

Steam boiler is decalcified.

➔ Descale the steam boiler.

Helpline

Karcher (UK) Limited operate a helpline allowing customers to discuss any problems experienced with our products.

The helpline operates during normal business hours, if you have difficulty getting through, please understand that there are peak periods during the day when our consultants are unable to take all calls coming in. In these circumstances we would ask that you try to contact us again later in the day.

The helpline number is 01295 752200, open from 8.30am to 5.00pm Monday to Friday.

It helps us if you have the model number and data plate details to hand before making your call.

Alternatively you may write or E-mail to the address below:

Karcher (UK) Limited
Karcher House
Beaumont Road
Banbury
Oxon, OX16 1TB

E-mail:

info@karcher.co.uk

Technical specifications

Power connection

Voltage	220-240 V 1~50/60 Hz
---------	-------------------------

Protection class	IPX4
------------------	------

Protective class	I
------------------	---

Performance data

Heating output	1500 W
----------------	--------

Operating pressure max.	0,32 MPa
-------------------------	----------

Heating time	6 Minutes
--------------	-----------

Max. steam quantity	35 g/min
---------------------	----------

Filling quantity

Water reservoir	0,8 l
-----------------	-------

Boiler capacity	0,5 l
-----------------	-------

Dimensions

Weight (without accessories)	4,1 kg
------------------------------	--------

Length	350 mm
--------	--------

Width	280 mm
-------	--------

Height	270 mm
--------	--------

Subject to technical modifications!

Special accessories

Order number

Microfibre cloth set, bath 2.863-171

2 soft floor cloths made of plush velour,
1 abrasive cover for the hand nozzle,
1 polishing cloth for the mirrors and fixtures

Microfibre cloth set, kitchen 2.863-172

2 soft floor cloths made of plush velour,
1 soft cover made of plush velour, 1 cloth
for the streak-free cleaning of stainless
steel surfaces

Mikrofibre cloth set, soft floor cloth 2.863-173

2 soft floor cloths made of velvet velour

Microfibre cloth set, soft cover 2.863-174

2 soft covers made of plush velour

Terry-cloth rags 6.369-357

5 floor cloths made of cotton

Terry-cloth covers 6.370-990

5 covers made of cotton

Round brush kit 2.863-058

4 round brushes for the detail nozzle

Round brush kit with brass bristles 2.863-061

removal of especially stubborn dirt ideal for
insensitive surfaces.

Round brush with scraper 2.863-140

Round brush with two rows of heat-resist-
ant bristles and a scraper. Not suitable for
sensitive surfaces.

Power nozzle and extension 2.884-282

For the cleaning of difficult to access areas
(such as corners) with increased cleaning
power.

Turbo steam brush 2.863-159

For cleaning tasks where you would usually
have to scrub

Textile care nozzle 4.130-390

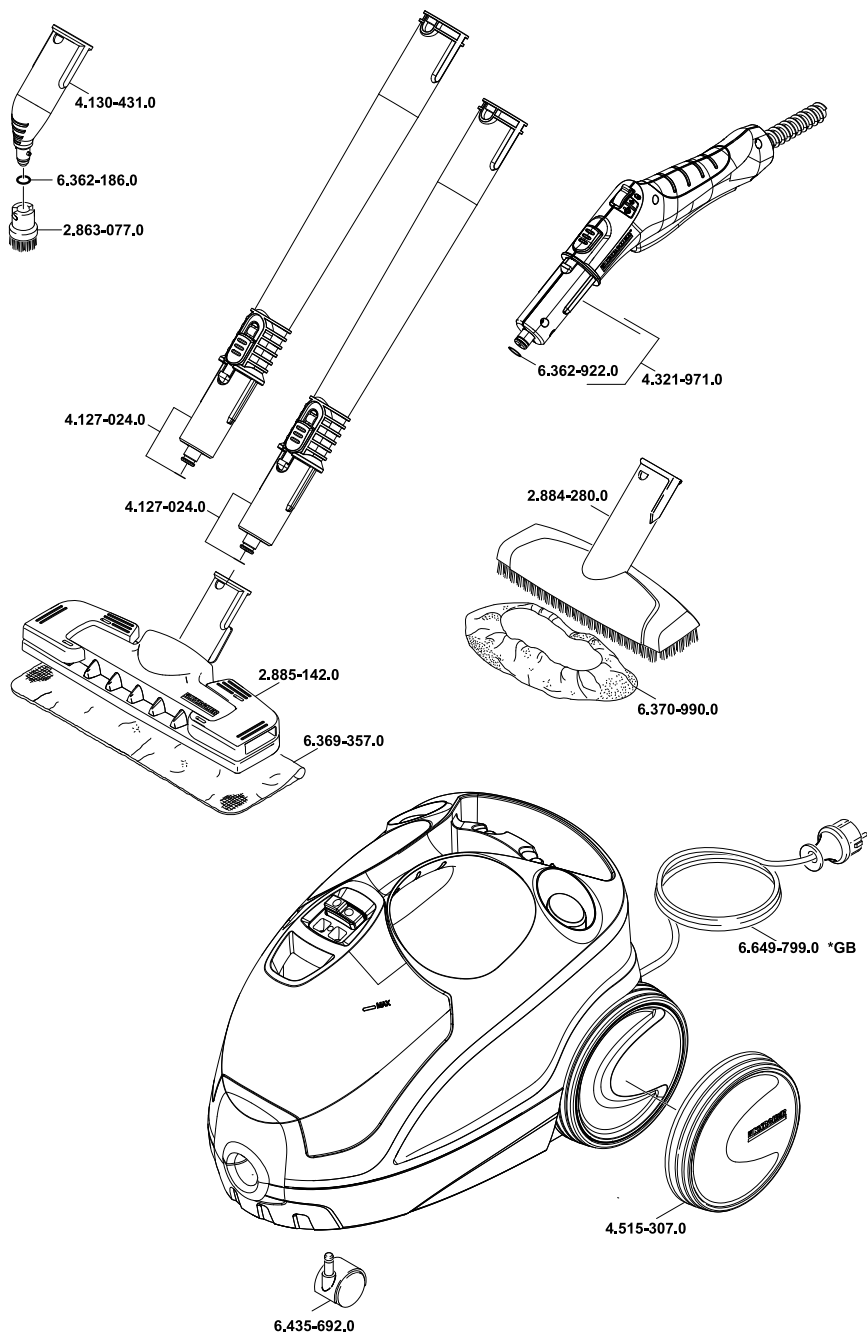
For freshening up clothes and textiles.

Wallpaper remover 2.863-062

to remove wallpaper and glue residue

Decalcifying sticks (9 pieces) 6.295-047

Spare Parts





www.karcher.co.uk